



LANDING UTILITY VESSEL 1908

GENERAL

Basic functions	Ro-Ro and dry cargo transportation, aquaculture support operations
Classification	MCA CAT2 Workboat
Flag	UK
Builder	Coastal Workboat Scotland

DIMENSIONS

Length overall (excl. ramp)	19.1 m
Beam moulded	7.5 m
Depth moulded	2.5 m
Design draught (hull)	1.7 m
Displacement (@ design draught)	175 t
Cargo deck area	100 m ²

CAPACITIES

Fuel oil	4.9 m ³
Potable water	1.0 m ³
Deck loading	2.5 t/m ²
Cargo Capacity (@ design draught)	40 t

PERFORMANCES

Speed (@ design draught)	8.0 kn
Bollard pull	5.7 t

PROPULSION SYSTEM

Main engines	2x Volvo D13/1
Total power	588 kW (800 bhp) @ 1800 rpm
Gearboxes	2x ZF W325 (ratio 3.407 : 1)
Propellers	Ø1150 mm, FPP
Steering	2x High performance rudders, interconnected

ELECTRICAL EQUIPMENT

Networks	240 V @ 50 Hz
Main generator set	1x Cummins Onan MDKDL QD 7kVA 50Hz

DECK LAY-OUT

Anchors	2x HHP anchors
Capstans	1x Tenfjord 3t and 1x 5t, hydraulically driven
Deck crane	1x HS Marine AK 72/16 E4 Optional 1x HS Marine AK 16/LHE2
Bow ramp	3200 x 3600 mm, operated via hydraulic cylinders

SECONDARY SHIP SYSTEMS

Cooling system	Grid coolers
Hydraulic system	Gearbox driven
Sanitary system	Cinderella toilet
Bilge ballast system	Includes deck wash connection/fire hydrant connection

ACCOMMODATION

A ventilated and heated day accommodation for 8 people is fitted. The accommodation includes a toilet, drying locker, pantry/ mess room and a wheelhouse. The wheelhouse offers an off watch seating area and navigation console.

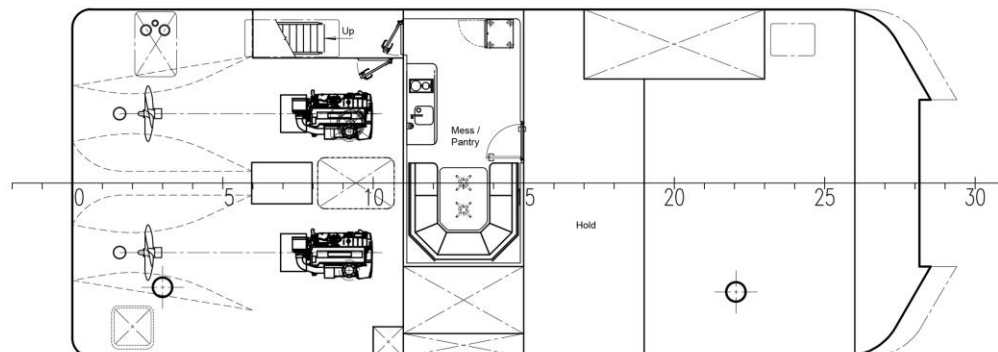
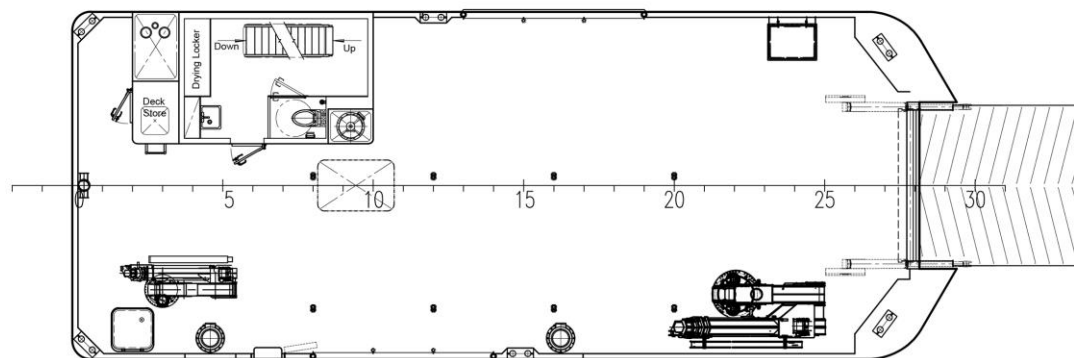
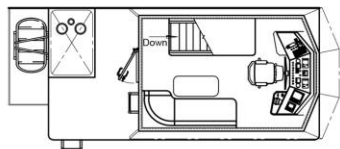
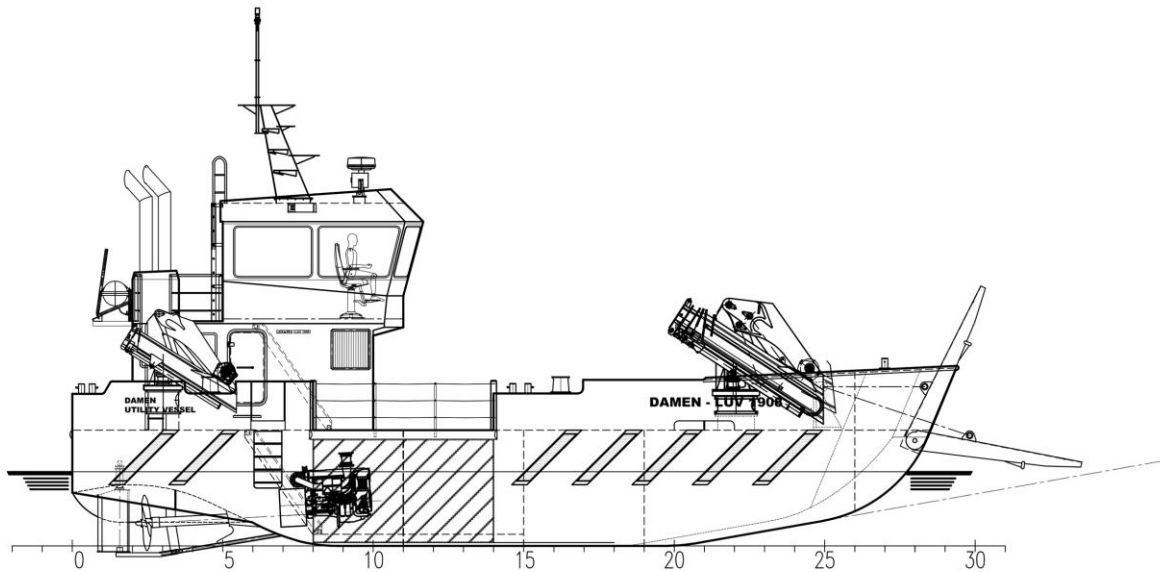
NAUTICAL AND COMMUNICATION EQUIPMENT

External communication	2x ICOM VHF
Nautical systems	Radar, AIS, GPS plotter, echosounder, hydraulic autopilot, Francis searchlight FR230CP

NOTES

All data presented is approximate, preliminary and is subject to change without prior notice. Artist impression and general arrangement plan may show optional equipment.

LANDING UTILITY VESSEL 1908



DAMEN

DAMEN SHIPYARDS GROUP

Avelingen-West 20
4202 MS Gorinchem
The Netherlands

P.O. Box 1
4200 AA Gorinchem
The Netherlands

phone +31 (0)183 63 99 22
fax +31 (0)183 63 21 89

info@damen.com
www.damen.com

© No part of the leaflet may be reproduced in any form, by print, photo print, microfilm, or any other means, without written permission from Damen Shipyards Group