



DAMEN SHOALBUSTER® 3511

"KAIKOURA"

GENERAL

PROJECT NUMBER	571616 (Damen Shipyards Hardinxveld)
DELIVERY DATE	Oct. 2013
BASIC FUNCTIONS	Towing, mooring, pushing, anchor handling, dredging support
CLASSIFICATION	Bureau Veritas I ✕ Hull Tug Unrestricted Navigation ✕ MACH AUT-UMS
REGULATIONS	Dutch Shipping Inspectorate (IWW)
FLAG	Netherlands
OWNER	Tym Group

DIMENSIONS

LENGTH O.A.	35.25 m
BEAM O.A.	11.60 m
DEPTH AT SIDES	5.25 m
DRAUGHT AFT	4.22 m
DISPLACEMENT	956 tons

TANK CAPACITIES

FUEL OIL	380.00 m ³
FRESH WATER	42.00 m ³
LUBRICATION OIL	6.50 m ³
GEAR OIL	4.30 m ³
HYDRAULIC OIL	6.50 m ³
DIRTY OIL	5.60 m ³
SLUDGE	4.60 m ³
SEWAGE	25.40 m ³

PERFORMANCES (TRIALS)

BOLLARD PULL	62.9 tons (m)
BOLLARD PULL (MAX.)	65.3 tons (m)
SPEED APPROX.	11.6 knots

PROPULSION SYSTEM

MAIN ENGINES	2x Caterpillar Type 3516B TA/HD B
TOTAL POWER	3840 bkW (5150 bhp) @ 1600 rpm
GEARBOXES	2x Reintjes WAF 873 /7.455:1
PROPULSION	2x Promarin fixed pitch propellers
DIAMETER	2x 2700mm V.d. Giessen optima nozzles
BOWTHRUSTER	Hydraulic Kalkman 400 hp

AUXILIARY EQUIPMENT

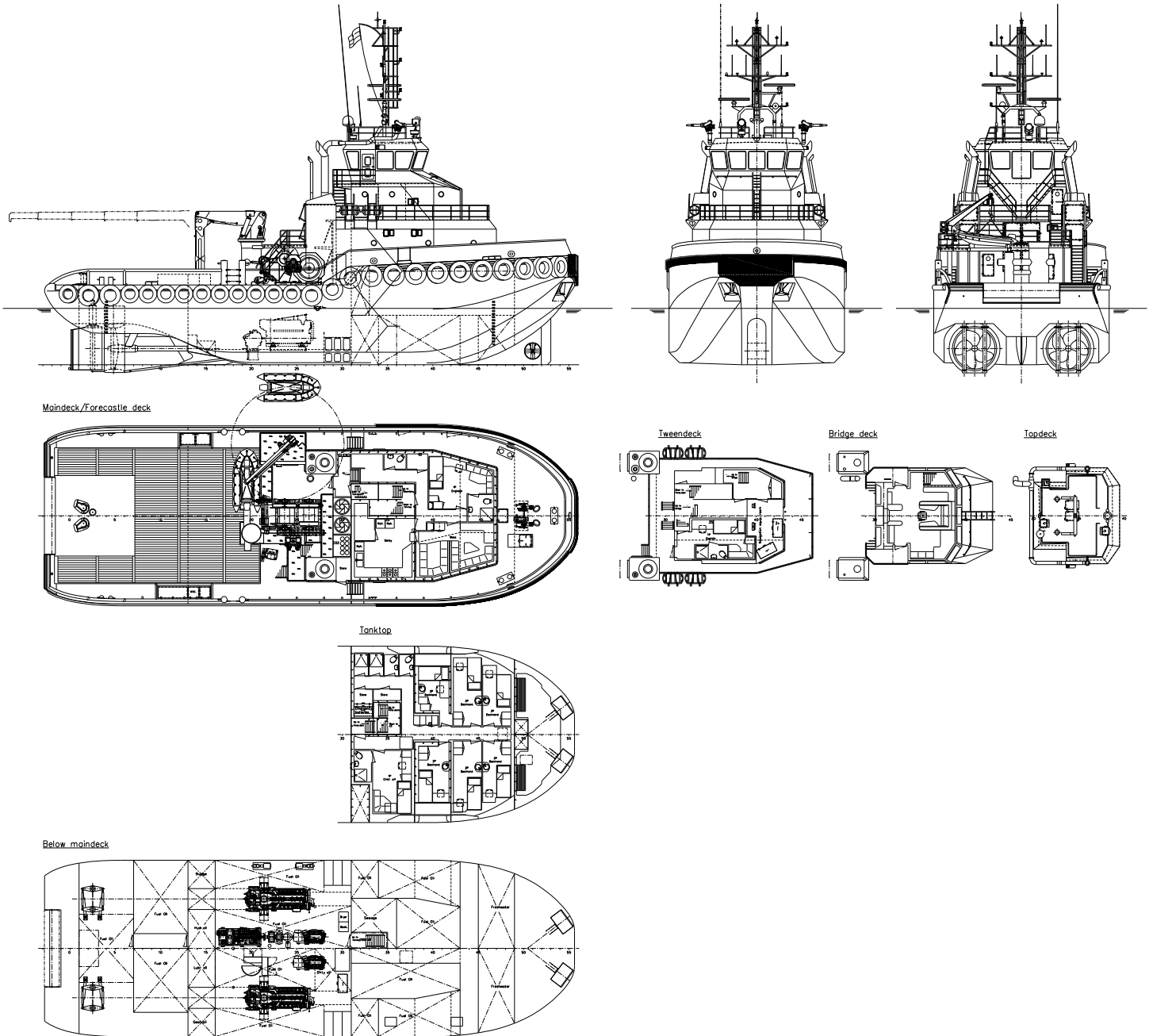
MAIN GENERATOR SETS	2x Caterpillar C9 TA
CAPACITY	2x 150 kVA, 50 Hz, 230/400V
HYDRAULIC / FIFI CAPACITY	1x Caterpillar C18 TA
CAPACITY	533 kW @ 2100 rpm
TRANSFER PUMPS	For Fuel Oil: VW5I 8020, 50 m ³ /h @ 4.8 bar
FUEL OIL SEPARATOR	Alfa Laval MAB 104
FI-FI INSTALLATION	Pump 1200m ³ /hr, 10.5 bar
FIFI MONITORS	2 x Innovfoam FWM-6-EL remote controlled

DECK LAY-OUT

ANCHOR	2x 450 kg Pool (HHP)
CHAIN	22 mm stud-link anchor chain 275 m
ANCHOR WINCH	Ridderinkhof hydraulically driven
DECK CRANE	Heila HLRM 170-4SL, 7.9 ton(m) @ 15.95 m
ANCHOR HANDLING/TOWING WINCH	Ridderinkhof 50 tons (m) @ 10 m/min (pull), 100 tons (m) @ 5 m/min (anchor) 75/150 tons (m) holding power
TOWING PINS	Karmoy Fork incl. chain stopper
TUGGERWINCH	12 ton (m) @ 4.5 m/min

NAUTICAL AND COMMUNICATION EQUIPMENT

ACCORDING TO GMDSS AREA 3	
SEARCHLIGHTS	2x Pesch 1000W
MAGNETIC COMPASS	1x Magnetic
GYRO COMPASS	1x Anschuetz 22 compact
WATCH ALARM	1x Marble 421
RADAR	2x Furuno FAR-2117
GPS	1x Furuno GP-150
AIS	1x Furuno FA-150
AUTOPILOT	1x Radio Zeeland Seapilot 75
ECHOSOUNDER	1x Furuno FE-700
SPEEDLOG	1x Furuno DS-80
VHF RADIO TELEPHONE	2x Sailor 6222
HANDHELD VHF	2x Jotron TR20
NAVTEX	1x Furuno NX-700
SSB	1x Furuno FS-1570
INMARSAT-C	2x TT Sailor 6110 SSAS
INTERCOM	Sigma 700
GSM	1x Sagem, Telsat
CCTV	1x Orlaco Compact
IRIDIUM TRANCEIVER	1x Sailor SC 4000A



DAMEN SHOALBUSTER® 3511

"KAIKOURA"

DAMEN

DAMEN SHIPYARDS HARDINXVELD

Member of the DAMEN SHIPYARDS GROUP



Rivierdijk 544
3371 EB Hardinxveld-Giessendam

P.O. Box 60
3370 AB Hardinxveld-Giessendam
The Netherlands

phone +31 (0)184 61 30 88
fax +31 (0)184 61 77 93

info@damen-hardinxveld.nl
www.damenshipyardhardinxveld.nl

© No part of the leaflet may be reproduced in any form, by print, photo print, microfilm, or any other means, without written permission from Damen Shipyards Hardinxveld