



DAMEN SHOALBUSTER® 3209

"SEA FOXTROT"

GENERAL

YARD NUMBER	571651 (Damen Shipyards Hardinxveld)
DELIVERY DATE	September 2011
BASIC FUNCTIONS	Towing, mooring, pushing, anchor handling, dredging support
CLASSIFICATION	Bureau Veritas I * Hull • Mach Tug Unrestricted Navigation AUT-UMS
REGULATIONS	Dutch Shipping Inspectorate (IVW)
FLAG	Netherlands
OWNER	Sea Contractors

DIMENSIONS

LENGTH O.A.	32.27 m
BEAM O.A.	9.35 m
DEPTH AT SIDES	4.40 m
DRAUGHT AFT	3.30 m

TANK CAPACITIES

FUEL OIL	220.00 m ³
FRESH WATER	40.80 m ³
LUBRICATION OIL	7.30 m ³
HYDRAULIC OIL	3.10 m ³
DIRTY OIL	4.30 m ³
BILGE WATER	4.30 m ³
SEWAGE	3.30 m ³

PERFORMANCES (TRIALS)

BOLLARD PULL AHEAD MAX.	50.0 tons (m)
SPEED APPROX.	11.4 knots

PROPULSION SYSTEM

MAIN ENGINES	2x Caterpillar Type 3512B TA/C
TOTAL POWER	2460 bkW (3344 bhp) @ 1600 rpm
GEARBOXES	2x Reintjes WAF 772 L/6.44:1
PROPULSION	2x Promarin fixed pitch propellers
DIAMETER	2x 2250 mm V.d. Giessen optima nozzles
BOWTHRUSTER	350 bhp, hydraulically driven

AUXILIARY EQUIPMENT

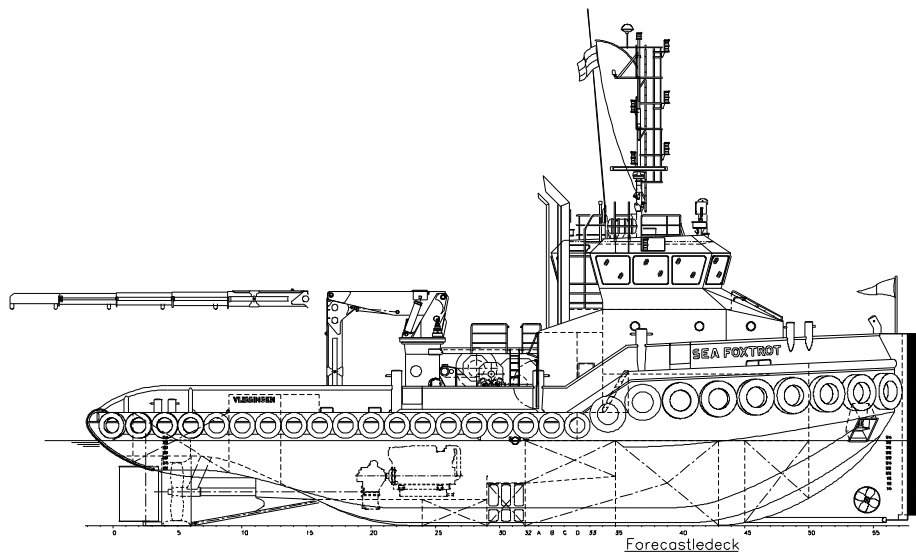
MAIN GENERATOR SETS	2x Caterpillar C4.4 TA
CAPACITY	2x 107.5 kVA, 50 Hz, 230/400V
HYDRAULIC	1x Caterpillar C18 TA-B
CAPACITY	357 kW @ 1800 rpm
TRANSFER PUMPS	For Fresh Water: VWSI 8020, 50 m ³ /h @ 4.8 bar For Fuel Oil: VWSI 8020, 50 m ³ /h @ 4.8 bar Westfalia, OCT 2
FUEL OIL SEPARATOR	

DECK LAY-OUT

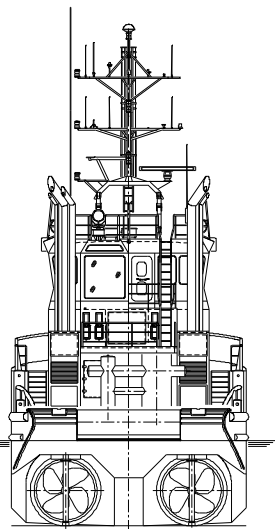
ANCHOR	2x 360 kg Pool (HHP)
CHAIN	19 mm stud-link anchor chain 220 m
ANCHOR WINCH	Ridderinkhof, hydraulically driven CAW-H-152
DECK CRANE	Heila HLRM 170-4SL, 7.9 ton(m) @ 15.93 m
TOWING WINCH	Ridderinkhof 50 tons (m) @ 10 m/min (pull), 100 tons (m) @ 5 m/min (anchor) 125/150 tons (m) holding power
TUGGERWINCH	Brevini 8 ton (m) @ 4.5 m/min

NAUTICAL AND COMMUNICATION EQUIPMENT

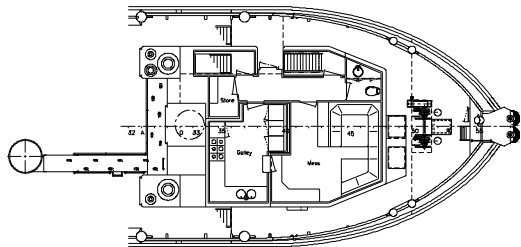
SEARCHLIGHTS	2x Pesch 2000W
MAGNETIC COMPASS	1x Cassens & Plat, Reflecta 1
GYRO COMPASS	1x Anschuetz 22
WATCH ALARM	1x Marble 421
RADAR	1x Furuno, FAR-2117
GPS	1x Furuno, GP-150D
AIS	1x Furuno, FA-150
AUTOPILOT	1x Radio Zeeland, Seapilot 75
ECHOSOUNDER	1x Furuno, FE-700
SPEEDLOG	1x Furuno, DS-80
VHF RADIO TELEPHONE	2x Sailor, RT5022 2x DSC, 1x Thrane & Thrane RT 6210
HANDHELD VHF	2x Jotron, TR20
NAVTEX	1x Furuno, NX-700
SSB	1x Furuno, FS-1570
INMARSAT-C	2x TT-3000E
INTERCOM	1x Sigma 700
SAT PHONE	1x Thrane & Thrane Fleet Broadband 150
SAT TV	1x KVH M7 Sat TV



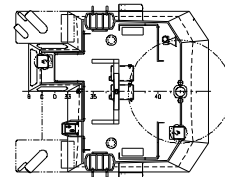
Forecastledeck



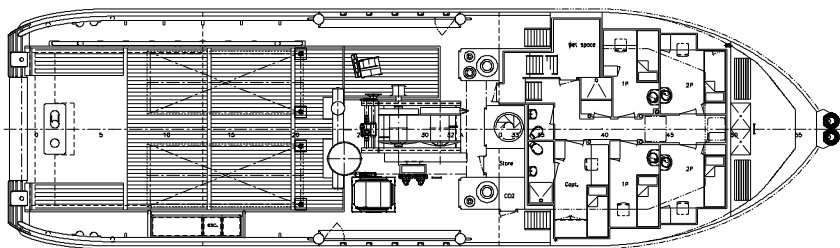
Topdeck



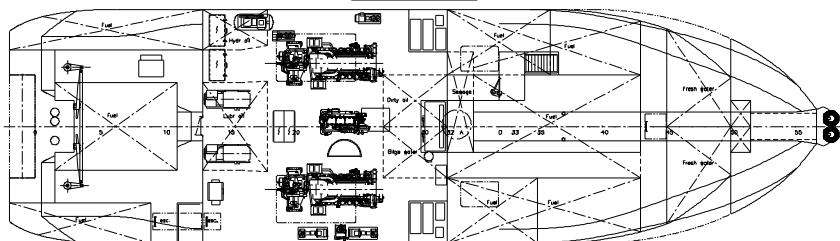
Maindeck



Wheelhousedeck



Below maindeck



PRINCIPLE CHARACTERISTICS

LENGTH od	32,08 mtr.
LENGTH mid	31,38 mtr.
LENGTH loadline	29,99 mtr.
BEAM mid	9,10 mtr.
DEPTH 1/2L	4,40 mtr.
DRAFT	3,20 mtr.

DAMEN SHOALBUSTER® 3209

"SEA FOXTROT"

DAMEN

DAMEN SHIPYARDS HARDINXVELD

Member of the DAMEN SHIPYARDS GROUP



Rivierdijk 544
3371 EB Hardinxveld-Giessendam

P.O. Box 60
3370 AB Hardinxveld-Giessendam

phone +31 (0)184 61 30 88
fax +31 (0)184 61 77 93

info@damen-hardinxveld.nl
www.damenshipyardshardinxveld.nl

The Netherlands