



SHOALBUSTER® 2509

MURJAN 41

GENERAL

Yardnumber	571675 (Damen Shipyards Hardinxveld)
Delivery date	Nov - 2018
Basic functions	Towing, mooring, pushing, anchor handling, dredger support
Classification	Bureau Veritas; 1 ✳ Hull • MACH Tug Unrestricted navigation • AUT-UMS
Flag	Saudi Arabia
Owner	Murjan Al-Sharq Marine

DIMENSIONS (approx.)

Length overall	25.03 m
Beam overall (Incl. tires)	9.64 m
Beam moulded	9.00 m
Depth moulded	3.40 m
Draught (98% condition)	2.60 m
Light ship weight (Approx.)	256 ton
Deadweight	80 t
Cargo deck area	53 m ²
Raised aft deck load	15 t/ m ²
Gross Tonnage	174 GT

TANK CAPACITIES (approx.)

Fuel oil	62.2 m ³
Fresh water	22.4 m ³
Dirty oil	3.1 m ³
Sewage	4.7 m ³
Hydraulic oil	0.9 m ³
Lubrication oil	1.9 m ³
Bilge water	0.9 m ³
Gear oil	0.4 m ³

PERFORMANCES (approx.)

Bollard pull max	30.0 t
Speed	11.5 kn

PROPULSION SYSTEM

Main engines	2x Caterpillar C32-TTA ACERT
Total Power	1790 bkW at 1800 rpm
Gearboxes	2x Twindisc MGX5321 6,39 : 1
Propulsion	2x Promarin fixed pitch propellers
Diameter	2x 1900 mm Optima nozzles
Bow thruster	1x 175 bhp, Hydraulic driven

AUXILIARY EQUIPMENT

Generator sets	2x Caterpillar C4.4 NA
Capacity	2x 47.5 KVA, 50 Hz, 230/400V
Transfer pump fo/fw	For freshwater: SIHI, 34 m ³ /hr For fuel oil: SIHI, 34 m ³ /hr
Fuel oil separator	Alfa Laval MIB 303
Hydraulic set	Caterpillar C-09 TA 269 kW @ 1800 RPM With Technodrive splitter gearbox

DECK LAY-OUT

Anchor	1x 270 kg Pool HHP, 1 x 225 kg Pool HHP
Anchor chain	19 mm short-link anchor chain 137.5m
Anchor winch	1x Kraaijeveld, Hydraulically driven,
Deckcrane	Heila AKC 120-4SL 4.3T @ 18.03 m
Anchor handling/	1x Kraaijeveld, KA-15-H-TR/TR
Towing winch	Towing drum: 650m Ø36, 40 ton @ 6m/min, 9 ton @ 18 m/min BHL = 81 ton Anchor handling drum: 350m Ø32, 40 ton @ 6m/min, 9 ton @ 18 m/min, BHL = 81 ton 25 ton SWL
A-frame	WK: 65T-2AP-1SJ(100T)-400
Towing pins / Sharkjaws	Kraaijeveld 8T @ 4.5 m/min
Tugger winch	

ACCOMMODATION

Heated and air-conditioned living spaces for 5 persons, consisting of a captain's cabin, an officers cabin, one single crew and one double crew cabin, a galley and sanitary facilities.

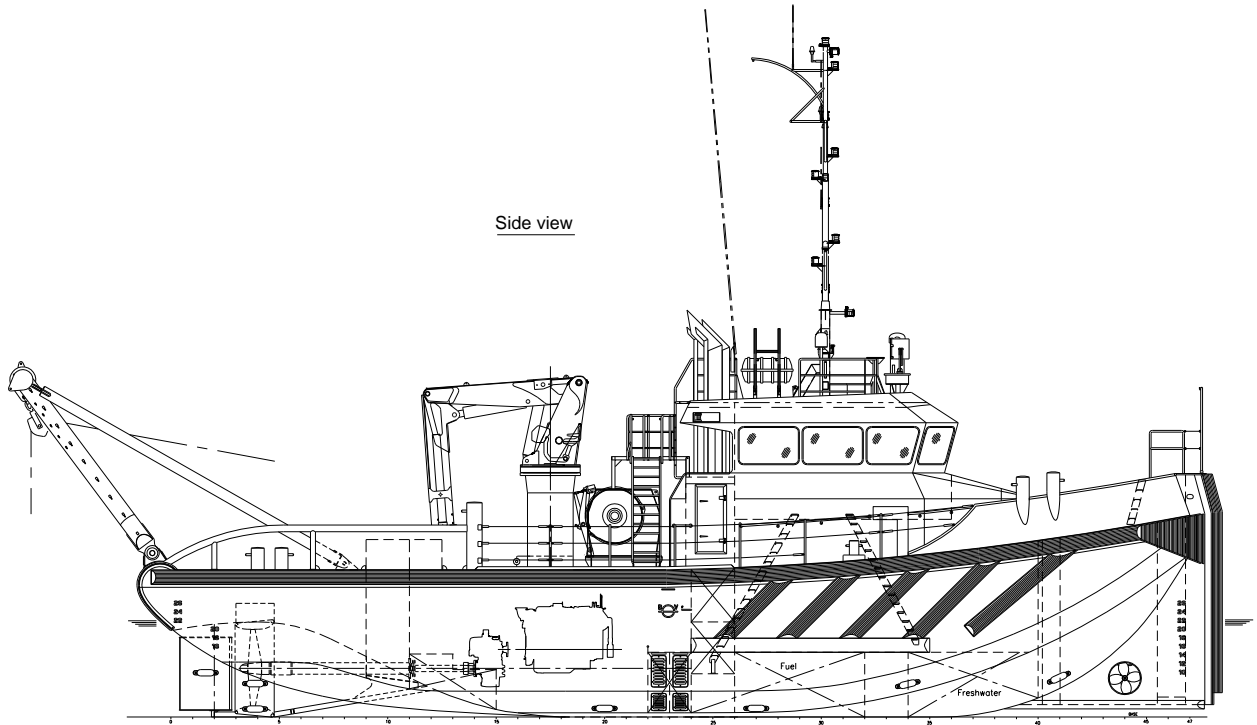
NAUTICAL AND COMMUNICATION EQUIPMENT – GMDSS A3

Search Lights	2x Pesch 3000 W
Compass	1x Kotter type with electric repeater
Gyro compass	1x Anshuetz, Standard 22 compact
Radar system	1x Furuno, FAR-1518BB
GPS	1x Furuno, GP-170
Autopilot	1x Simrad, AP-70
AIS	1x Furuno, FA-170
Echosounder	1x Furuno, FE-800
Speedlog	1x Skipper, EML-224
VHF radio telephone	2x Sailor, RT6222, 25W, 1x sailor 6248
GSM	1x Pepwave MAX BR-1 4G
Handheld VHF	2x Jotron TR-60 + 4x Sailor SP3540 AteX
Navtex	1x Furuno, NX-700A
SSB (MF/HF receiver)	1x Sailor 6310 with DSC
Inmarsat - C	2x Sailor 6110
Bridge watch alarm	1x Furuno BR-500
Intercom	1x Phonetech, CIS3000
Wind indicator	1x Obsermet OMC 115

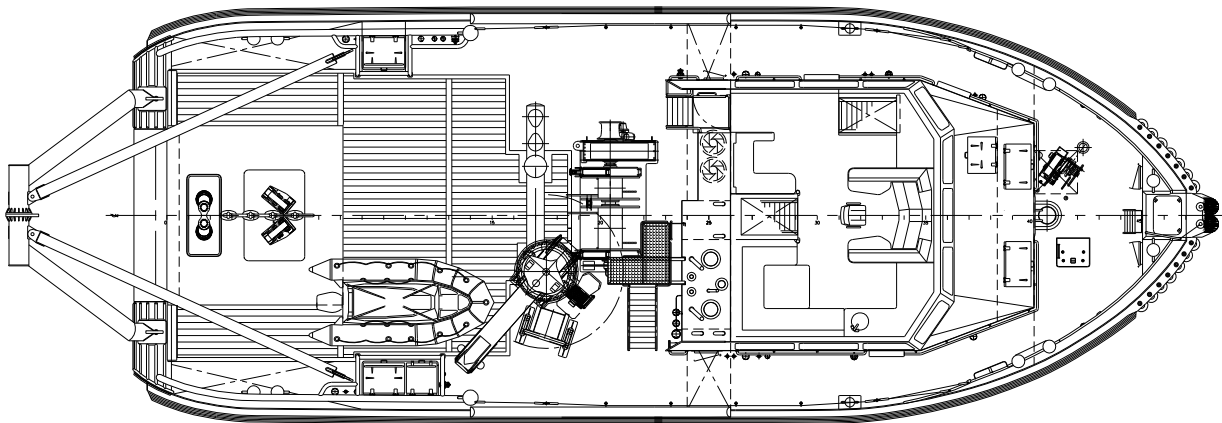
SHOALBUSTER 2509

MURJAN 41

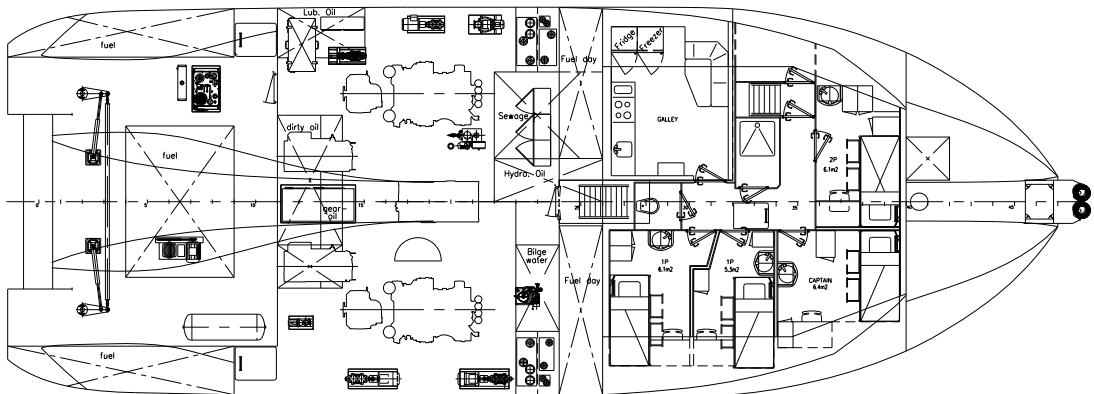
Side view



Main deck



Below main deck



DAMEN

DAMEN SHIPYARDS GROUP

Rivierdijk 544
3371 EB Hardinxveld-Giessendam
The Netherlands

P.O. Box 60
3370 AB Hardinxveld-Giessendam
The Netherlands

phone +31 (0)184 61 30 88
fax +31 (0)184 61 77 93

info-dsha@damen.com
www.damen.com