



DAMEN SHOALBUSTER® 2509

“BOMMEL”

GENERAL

YARD NUMBER	571667 (Damen Shipyards Hardinxveld)
DELIVERY DATE	November 2012
BASIC FUNCTIONS	Towing, mooring, pushing, anchor handling, dredge support
CLASSIFICATION	Bureau Veritas I✕HULL • MACH Tug Unrestricted navigation, AUT UMS
NATIONAL AUTHORITIES	Dutch Shipping Inspectorate 30 miles from coastline
FLAG	The Netherlands
OWNER	Scheepvaartbedrijf Herman Sr. B.V. The Netherlands

DIMENSIONS

LENGTH O.A.	24.99	m
BEAM MLD.	9.00	m
DEPTH AT SIDES	3.19	m
DRAUGHT AFT (FULLY LOADED APPROX.)	2.60	m
DISPLACEMENT (APPROX.)	265	ton
GROSS TONNAGE	174	GT

TANK CAPACITIES (APPROX.)

FUEL OIL	62.2	m ³
FRESH WATER	18.0	m ³
SEWAGE	4.7	m ³
DIRTY OIL	3.1	m ³
LUBRICATION OIL	1.9	m ³
HYDRAULIC OIL	0.9	m ³
GEAR OIL	0.4	m ³
BILGE WATER	0.9	m ³

PERFORMANCES (TRIALS)

BOLLARD PULL AHEAD.	27.6	ton(m)
SPEED APPROX.	11.0	knots

PROPULSION SYSTEM

MAIN ENGINES	2x Caterpillar C32-TTA ACERT
TOTAL POWER	1492 bkW (2000 bhp) @ 1800 rpm
GEARBOXES	2x Reintjes WAF 562L/ 5.947:1
PROPULSION	2x Promarin fixed pitch propeller
DIAMETER	2x 1800 mm in V.d. Giessen Optima nozzles
BOWTHRUSTER	175 bhp, hydraulically driven

AUXILIARY EQUIPMENT

GENERATOR SETS	2x John Deere 4045TFM76
CAPACITY	2x 60 kVA, 50 Hz, 230/400V
TRANSFER PUMPS	For Fresh Water: SIHI, 25 m ³ /h @ 1.5 bar For Fuel Oil: SIHI 25 m ³ /h @ 1.5 bar
FUEL OIL SEPARATOR	Alfa Laval MIB 303 760L/Hr
HYDRAULIC SET	Caterpillar C-09 TA 315kW @ 2250rpm With clutchable hydraulic bow thruster pump

DECK LAY-OUT

ANCHOR	1x 270 kg Pool (HHP) 1x 225 kg Pool (HHP)
CHAIN	19 mm short-link anchor chain 137.5 m
ANCHOR WINCH	Ridderinkhof hydraulically driven
DECK CRANE	HS Marine AKC 145LHE4 4650kg @ 17,07m
ANCHOR HANDLING / TOWING WINCH	40 ton @ 6 m/min
ACC. TO REGULATIONS OF NOBLE DENTON	9 ton @ 20 m/min
A-FRAME (OPTIONAL)	75 ton holding power
TOWING PINS	25 ton SWL
TUGGER WINCH	MKB quarto pin type Dromec HPV-12000 12T@4,5/12m/min

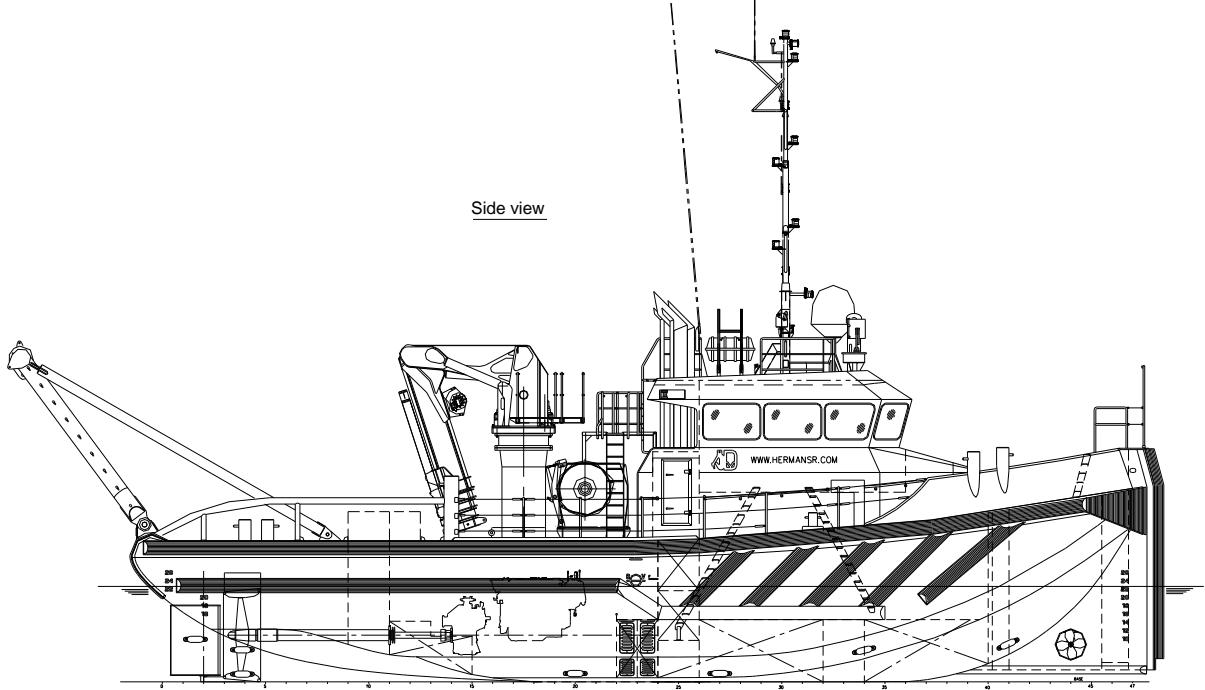
ACCOMMODATION

Heated and air-conditioned living spaces for 5 persons, consisting of a captain's cabin, an officers cabin, one single crew cabin and one double crew cabin, a galley and sanitary facilities.

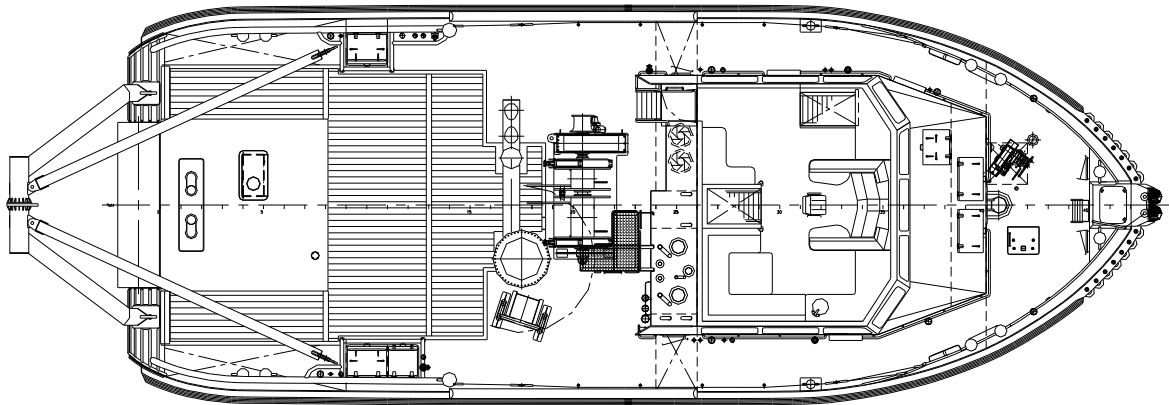
NAUTICAL AND COMMUNICATION EQUIPMENT

ACCORDING GMDSS AREA3	
SEARCHLIGHTS	Pesch 2x 3000W
MAGNETIC COMPASS	Kotter type with electric repeater
GYRO COMPASS	Anschuetz Standard 22 Compact
RADAR	Kelvin Hughes, Manta Digital
GPS	Leica MX 510,
AUTOPILOT	Seapilot 75
AIS	Furuno FA-150
ECHOSOUNDER	Furuno FE-700
SPEEDLOG	Furuno DS-80
VHF RADIO TELEPHONE	3x Sailor RT6222, 25 W
GSM	Sagem Telsat
HANDHELD VHF	2x Jotron TR20
NAVTEX	Furuno NX 700
MF/HF TRANCEIVER	Thrane & Thrane 6310 with DSC
INMARSAT-C	Thrane & Thrane 6110
BRIDGE WATCH ALARM	Marble 421
CCTV	Orlaco
INTERCOM	Radio Zeeland Sigma 700
FLEET SYSTEM	Thrane & Thrane Fleetbroadband 250
SATELLITE TV SYSTEM	Seatel 3004
WIND INDICATOR	Meteo system Osermet OMC-115

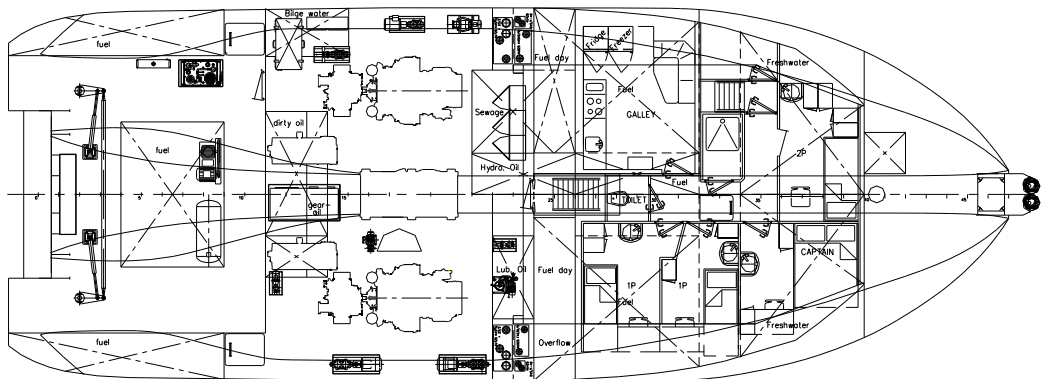
Side view



Main deck



Below main deck



DAMEN SHOALBUSTER® 2509

"BOMMEL"

DAMEN

DAMEN SHIPYARDS HARDINXVELD

Member of the DAMEN SHIPYARDS GROUP



Rivierdijk 544
3371 EB Hardinxveld-Giessendam

P.O. Box 60
3370 AB Hardinxveld-Giessendam
The Netherlands

phone +31 (0)184 61 30 88
fax +31 (0)184 61 77 93

info@damen-hardinxveld.nl
www.damenshipyardshardinxveld.nl