



DAMEN PUSHER® 2611

GENERAL

MATERIAL	Steel
BASIC FUNCTIONS	Pushboat operations
CLASSIFICATION	Lloyd's Register: ✱ A1 I.W.W. Pusher Tug Zone 2 [✱]LMC

DIMENSIONS

LENGTH O.A.	26.21 m	86ft 0 inch
BEAM O.A.	11.03 m	36ft 2 inch
DEPTH AT SIDES	2.30 m	7ft 7 inch
DRAUGHT AFT (MAX)	1.65 m	5ft 5 inch

TANK CAPACITIES

FUEL OIL	48.80 m ³	12,890 USG
BALLAST WATER	67.20 m ³	17,750 USG
FRESH WATER	9.40 m ³	2,480 USG
LUBE OIL	2.50 m ³	660 USG
DIRTY OIL	1.60 m ³	420 USG
SEWAGE	1.70 m ³	450 USG
BILGE WATER	2.60 m ³	685 USG

PERFORMANCES

SPEED (WITH 2000T DWT)	7.3 knots (13.5 km/h)
------------------------	-----------------------

PROPULSION AND CONTROL SYSTEM

MAIN ENGINES	3x CAT C32 ACERT TA/A
TOTAL POWER	1,677 bkW (2,250 bhp) / 1,800 rpm
GEARBOXES	3x Reintjes WAF 464L
PROPELLERS	3x 'Kaplan II' fixed pitch propeller
NOZZLE	3x Ø1500mm (59inch) 'Optima' type with stainless steel inner rings.
STEERING GEAR	3x independent elec/hydr. powered, 50°, tiller, rudder indicator.
BOW (JET) THRUSTER	1x 4 channel type, Hydr, 250bhp

AUXILIARY EQUIPMENT

GENERATOR SETS	2x Caterpillar C4.4 NA, 440V,73kVA, 60Hz
BILGE/GEN. SERVICE PUMP	2x AKHA 5101 (5,285 USG/hr each)
FUEL OIL SEPARATOR	Westfalia OTC 2-02-137
FRESH WATER PRESSURE SET	AOHA 1202 including a 29 USG pressure tank
SEWAGE PUMP	Libellula L1-H, (1,745 USG/hr at 21 PSI)
ENGINE ROOM VENTILATION	28.000 m ³ /hr (16,480 ft ³ /min) supply
FIRE FIGHTING E.R.	Fixed system, CO ₂

DECK LAY-OUT

Ø ANCHOR	2x 415 kg (915lbs) High Holding Power
Ø ANCHOR WINCH	2x electric winches, manual brake
COUPLING WINCHES	4x manual, brake holding force 40T(m)
PUSH BOW FENDERING	Rubber sheets vulcanized onto steel double plates.
CORNER FENDERING	Rubber with hakorite top layer.

ACCOMMODATION

Air-conditioned service and living spaces for 7 persons crew consisting of 3 cabins dry store, galley, mess/dayroom, wheelhouse, sanitary spaces and changing room.

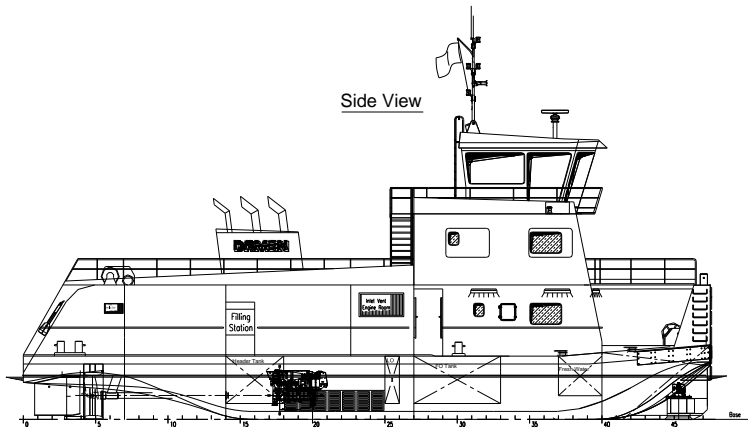
NAUTICAL AND COMMUNICATION EQUIPMENT

SEARCH LIGHTS	2 x 1000 W MP Pesch
RADARS	2x Furuno RHRS 2014 TFT
SATELLITE COMPASS	Furuno SC-50
GPS	Furuno GP-32
ECHO SOUNDER	Furuno LS-6100
VHF	2x Sailor, RT6222

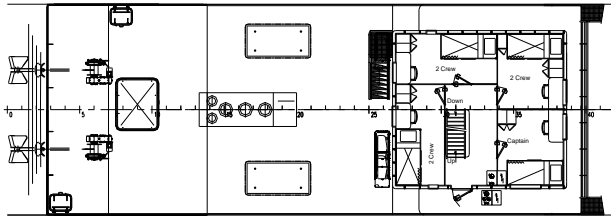
* ITEMS MARKED WITH AN Ø CAN BE FITTED AS AN OPTION

* SPECIFICATIONS MENTIONED ARE SUBJECT TO CHANGE WITHOUT PRIOR NOTICE

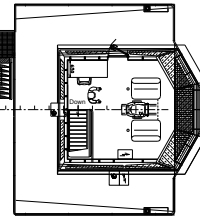
* NO RIGHTS CAN BE OBTAINED FROM THIS DOCUMENT AS IT IS FOR INFORMATION ONLY



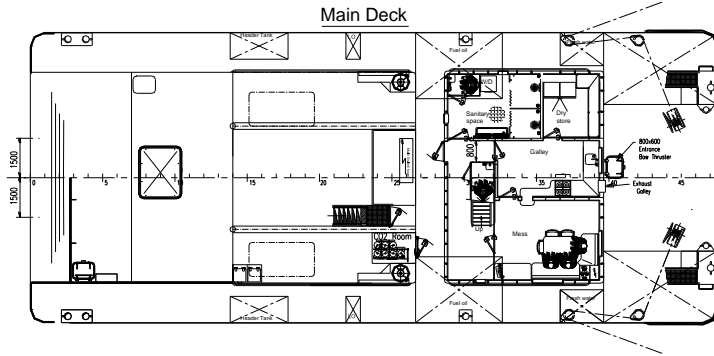
Accommodation Deck



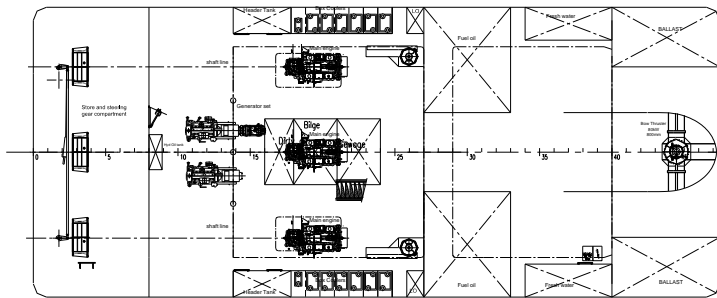
Bridge Deck



Main Deck



Below main deck



DAMEN PUSHER[®] 2611



DAMEN SHIPYARDS GORINCHEM

Member of the DAMEN SHIPYARDS GROUP



Industrieterrein Avelingen West 20
4202 MS Gorinchem

P.O. Box 1
4200 AA Gorinchem
The Netherlands

phone +31 (0)183 63 99 11
fax +31 (0)183 63 21 89

info@damen.nl
www.damen.nl