



DAMEN PUSHBUSTER® 3009

"TERRAMARE 1"

GENERAL

YARD NUMBER	571679 (Damen Shipyards Hardinxveld)
DELIVERY DATE	07 december 2012
BASIC FUNCTIONS	Towing, mooring, pushing, anchor handling, dredging support
CLASSIFICATION	Bureau Veritas I \otimes Hull • Mach Tug Unrestricted Navigation AUT-UMS IWS IACS No 99
REGULATIONS	
FLAG	Cyprus
OWNER	BW Marine (Cyprus) Limited

DIMENSIONS

LENGTH O.A.	30.08 M
BEAM O.A.	9.10 M
DEPTH AT SIDES	4.40 M
DRAUGHT AFT APPROX.	3.20 M
DISPLACEMENT	350 Tons
GROSS TONNAGE	330 GT

TANK CAPACITIES (APPROX.)

FUEL OIL	174.90 m ³
FRESH WATER	15.00 m ³
LUBRICATION OIL	7.30 m ³
HYDRAULIC OIL	3.10 m ³
DIRTY OIL	4.30 m ³
BILGE WATER	4.30 m ³
SEWAGE	3.30 m ³

PERFORMANCES (TRIALS)

BOLLARD PULL AHEAD APPROX.	44.0 tons (m)
SPEED APPROX.	11.5 Knots

PROPULSION SYSTEM

MAIN ENGINES	2x Caterpillar Type 3512C TA
TOTAL POWER	2498 bkW (3350 bhp) @ 1600 rpm
GEARBOXES	2x Reintjes WAF 773 L/6.44:1
PROPULSION DIAMETER	2x Promarin fixed pitch propellers 2x 2250 mm V.d. Giessen optima nozzles
BOWTHRUSTER	Kalkman Beta 350 H 257 kW, 350pk hydraulically driven

AUXILIARY EQUIPMENT

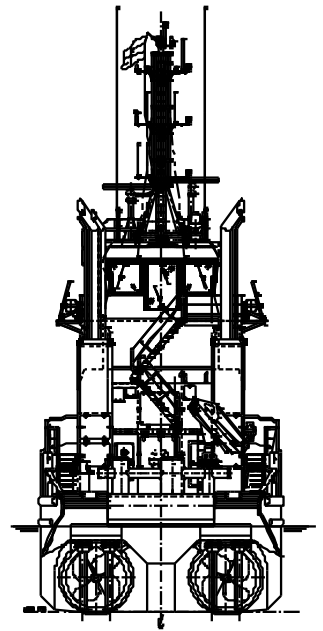
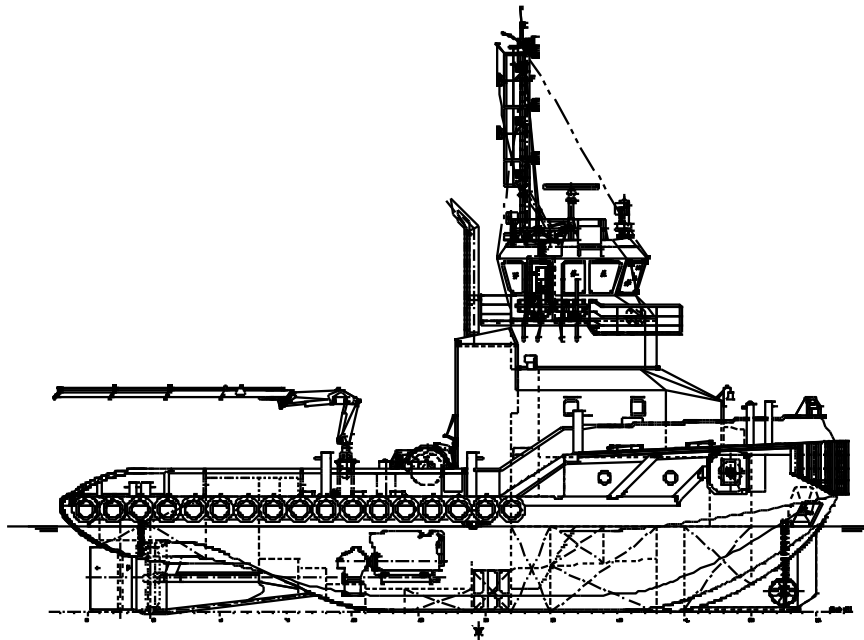
MAIN GENERATOR SETS	2x Caterpillar C4.4 TA
CAPACITY	2x 107.5 kVA, 50 Hz, 230/400V
HYDRAULIC CAPACITY	1x Caterpillar C18 TA 533 kW @ 2100 rpm
TRANSFER PUMPS	For Fresh Water: VWSI 8020, 50 m ³ /h @ 4.8 bar For Fuel Oil: VWSI 8020, 50 m ³ /h @ 4.8 bar Westfalia OTC 2
FUEL OIL SEPARATOR	

DECK LAY-OUT

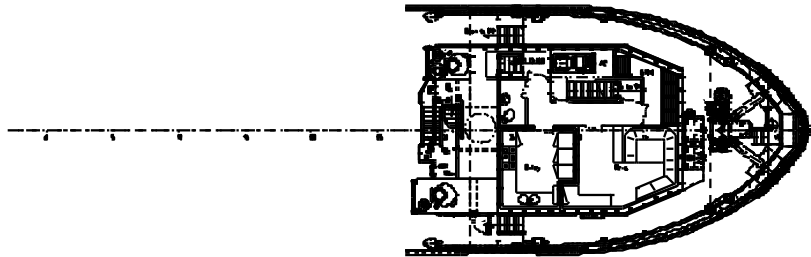
ANCHOR	2x 300 kg Pool (HHP)
CHAIN	2x 192,5 m 19mm studlink anchor chain
ANCHOR WINCH	Ridderinkhof hydraulically driven
DECK CRANE	Heila HLRM 13-3SL, 1.0ton(m) @ 10.95 m
TOWING WINCH	Ridderinkhof 50 tons (m) @ 5 m/min (pull), Brake holding 75tons. 600m cable • 40mm Triple pin type
TOWIN PINS	

NAUTICAL AND COMMUNICATION EQUIPMENT

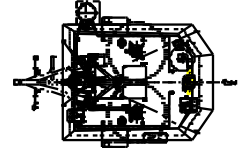
ACCORDING TO GMDSS AREA 3	
SEARCHLIGHTS	2x Pesch 3000W
MAGNETIC COMPASS	1x Magnetic, Reflecta 1
GYRO COMPASS	1x Anschutz standard 22
WATCH ALARM	1x Marble 421
RADAR	2x Furuno FAR-2117
GPS	1x Furuno GP-150D
ECDIS	2x Transas, Navi Sailor 4000
AIS	1x Furuno FA-150
AUTOPILOT	1x RZ Seapilot 75
ECHOSOUNDER	1x Furuno FE-700
SPEEDLOG	1x Furuno DS 80
VHF RADIO TELEPHONE	2x T&T Sailor RT6222
HANDHELD VHF	2x Jotron TR20
NAVTEX	1x Furuno NX-700A
SSB	1x Furuno FS-1570
INMARSAT-C	2x T&T Sailor 6110/ 6120
INMARSAT-F	1x Fleet Broadband 250
INTERCOM	1x RZ Sigma 700
WINDMEASUREMENT	1x Obsermet OMC 115/139
CCTV	1x Orloco 6 camera system



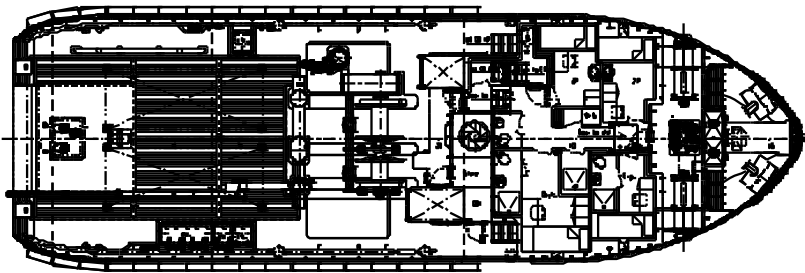
Forecastle deck and Platform



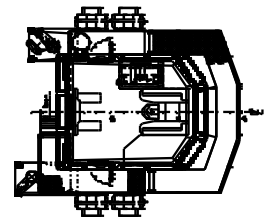
Trudect



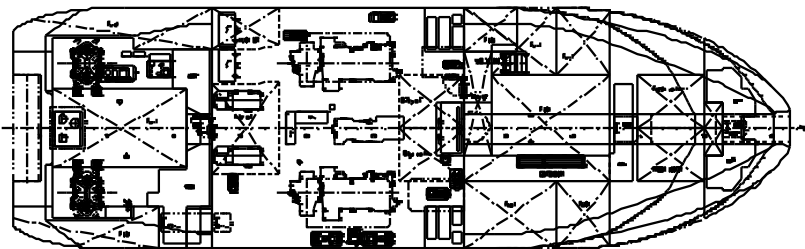
Main deck



Bridge deck



Below main deck



DAMEN PUSHBUSTER® 3009

"TERRAMARE 1"

DAMEN

DAMEN SHIPYARDS HARDINXVELD

Member of the DAMEN SHIPYARDS GROUP



Rivierdijk 544
3371 EB Hardinxveld-Giessendam

P.O. Box 60
3370 AB Hardinxveld-Giessendam
The Netherlands

phone +31 (0)184 61 30 88
fax +31 (0)184 61 77 93

info@damen-hardinxveld.nl
www.damenshipyardhardinxveld.nl