



DAMEN MULTI CAT[®] 3013 "ODIN"

GENERAL

YARD NUMBER	571630 (Damen Shipyards Hardinxveld)
DELIVERY DATE	June 2010
BASIC FUNCTIONS	Anchor handling, dredger service, supply, towing, hose handling and survey
CLASSIFICATION	Bureau Veritas I *Tug Unrestricted navigation • MACH, AUT-UMS
NAT. AUTHORITIES	Dutch Shipping Inspectorate (IWW): Unrestricted service
FLAG	The Netherlands
OWNER	ST Marine Support, The Netherlands

DIMENSIONS

LENGTH O.A.	30.30	m
LENGTH MLD	28.00	m
BEAM MLD.	12.50	m
DEPTH AT SIDES (1/2 L)	3.80	m
DRAUGHT AFT (APPROX.)	± 2.60	m

TANK CAPACITIES

FUEL OIL	182.0	m ³
BLACK/GREY WATER	5.9	m ³
FRESH WATER	80.0	m ³
DIRTY OIL	2.8	m ³
HYDR OIL	4.5	m ³
LUB OIL	2.8	m ³
BILGE WATER	2.8	m ³
BALLAST WATER (FRESH)	87.0	m ³

PERFORMANCES

BOLLARD PULL	35	ton(m)
SPEED	9.6	knots

PROPULSION SYSTEM

MAIN ENGINES	3x Caterpillar 3412D TTA
TOTAL POWER	1866 bkW (2500 bhp) at 1800 rpm
GEARBOXES	3x Reintjes WAF 464 5.591 : 1
PROPULSION	3x Promarim fixed pitch propellers in Optima nozzles, 1700 mm
BOWTHRUSTER	Hydraulically driven 200 kW (310 hp), 360°

AUXILIARY EQUIPMENT

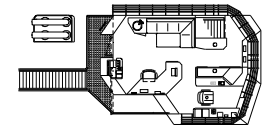
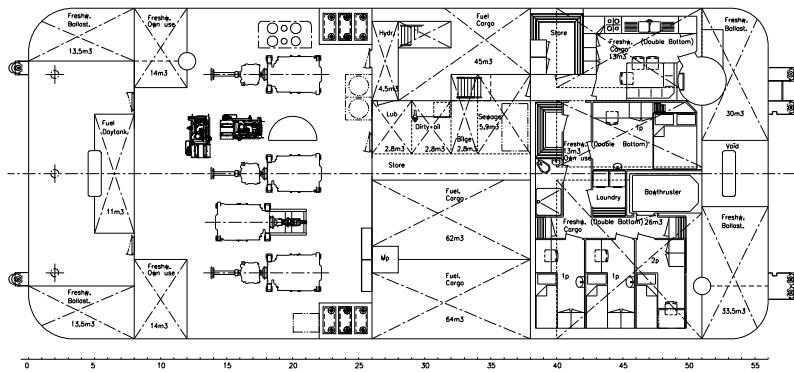
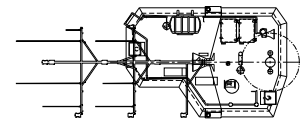
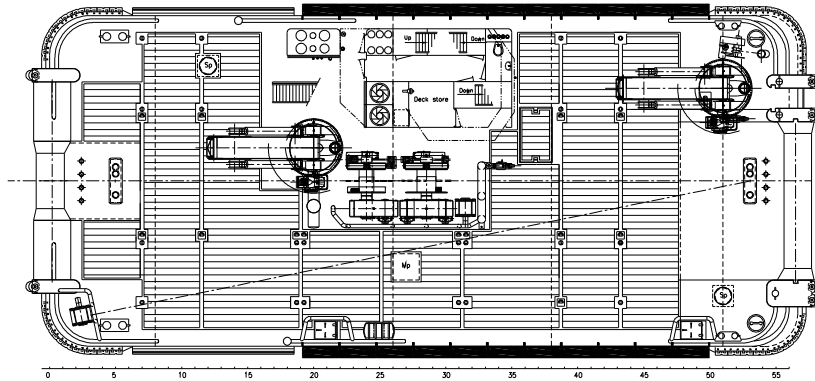
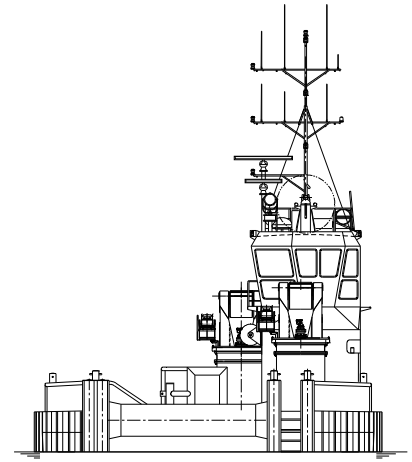
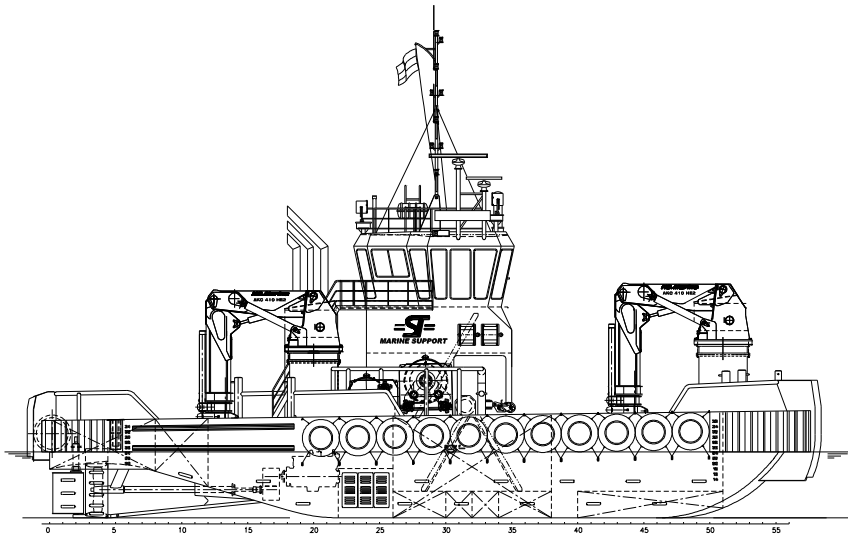
GENERATOR SETS	2x Caterpillar C 04.4, 107,5 kVA each
HYDRAULIC POWER	Caterpillar 3412D TTA, 632 kW @1800 rpm
FUEL OIL SEPERATOR	Alfa Laval MIB 303

DECK LAY-OUT

ANCHOR CHAIN	2x 360 kg Pool TW (HHP) (one spare) 19 mm stud-link anchor chain 275 m
ANCHOR WINCH	Ridderinkhof, hydraulically driven
DECK CRANE	2x HS marine AKC 410 HE2 22,8 ton (m) @ 13.10 m
ANCHOR HANDLING WINCH	Kraaijeveld KA-30/2-H-TR
CAPACITY	100 ton at 8 m/min pulling force (1 st layer) 50 ton at 12 m/min pulling force (1 st layer) 20 ton at 32 m/min pulling force (1 st layer) 150 ton brake holding force (1 st layer)
TOWING WINCH	Kraaijeveld KA-20/2-H-TR
CAPACITY	40 ton at 12 m/min pulling force (1 st layer) 20 ton at 24 m/min pulling force (1 st layer) 100 ton brake holding force (1 st layer)
TOWING HOOK	2x Mampaey 20 ton SWL
TUGGER WINCHES	2x Brevini 8 ton at 4.5 m/min
TOWING PINS	2x WK Hydraulics triple pin type

NAUTICAL AND COMMUNICATION EQUIPMENT

SEARCH LIGHTS	2x Pesch 2000 W
RADAR SYSTEM	1x Furuno, FAR 2117
COMPASS	1x Cassens & Plat, Reflecta 1
GYRO COMPASS	1x Tokimec, ES- 160
ECHOSOUNDER	1x Furuno, FE-700
SPEEDLOG	1x Furuno, DS-80
GPS	1x Furuno, GP-150 D
CHARTSYSTEM	1x Transas Navigator Pro
AUTOPILOT	1x Sea pilot 75
VHF	2x Sailor, RT5022
HANDHELD VHF	2x TR-20
SSB	1x Thrane & Trane Sytem 5000
INMARSAT - C	2x Sailor, H-2095 C
NAVTEX	1x Furuno, NX-700
IRIDIUM TELEPHONE	1x Sailor, SC 4000A
AIS	1x Furuno, FA-150
WATCH ALARM	1x Marble, 421
INTERCOM	Sigma-700
ENTERTAINMENT SYSTEM	1x Seatel, Coastal 24



DAMEN MULTI CAT[®] 3013

"ODIN"

DAMEN

DAMEN SHIPYARDS HARDINXVELD

Member of the DAMEN SHIPYARDS GROUP



Rivierdijk 544
3371 EB Hardinxveld-Giessendam

P.O. Box 60
3370 AB Hardinxveld-Giessendam
The Netherlands

phone +31 (0)184 61 30 88
fax +31 (0)184 61 77 93

info@damen-hardinxveld.nl
www.damenshipyardshardinxveld.nl