



© Lekko

## DAMEN MULTI CAT<sup>®</sup> 2611 "YN 571664"

### GENERAL

YARD NUMBER	571664 (Damen Shipyards Hardinxveld)
DELIVERY DATE	December 2012
BASIC FUNCTIONS	Anchor handling, dredger service, supply, towing, hose handling and survey
CLASSIFICATION	Bureau Veritas I ✱ Hull • MACH Tug Unrestricted navigation, • AUT-UMS
NAT. AUTHORITIES	Dutch Shipping Inspectorate or MCA
FLAG	Netherlands or UK
OWNER	To be determined

### DIMENSIONS

LENGTH O.A.	26.00	m
BEAM O.A.	11.50	m
DEPTH AT SIDES	3.50	m
DRAUGHT	± 2.50	m
DISPLACEMENT (DEPARTURE)	542	ton(m)

### TANK CAPACITIES (APPROX.)

FUEL OIL	109.0	m <sup>3</sup>
BLACK/GREY WATER	9.2	m <sup>3</sup>
FRESH WATER	49.0	m <sup>3</sup>
DIRTY OIL	2.0	m <sup>3</sup>
HYDR OIL	1.2	m <sup>3</sup>
LUB OIL	1.8	m <sup>3</sup>
BILGE WATER	1.8	m <sup>3</sup>
BALLAST WATER	25.5	m <sup>3</sup>

### PERFORMANCES

BOLLARD PULL (AVERAGE)	34.4	ton(m)
BOLLARD PULL (MAXIMUM)	35.3	ton(m)
SPEED	10.3	knots

### PROPULSION SYSTEM

MAIN ENGINES	3x Cat C32 TTA
TOTAL POWER	1902 bkW at 1800 rpm
GEARBOXES	3x Reintjes WAF 464 5.591 : 1
PROPULSION	3x fixed pitch propellers in Optima nozzles, 1700 mm
BOWTHRUSTER	Hydraulically driven 200 kW, 360°

### AUXILIARY EQUIPMENT

GENERATOR SETS	2x Cat. C 04.4, 107,5 kVA each
HYDRAULIC POWER	Cat C18 TA, 357 kW 1800rpm
FUEL OIL SEPARATOR	OTC-2, 1150 ltr/hr

### DECK LAY-OUT

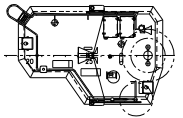
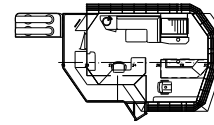
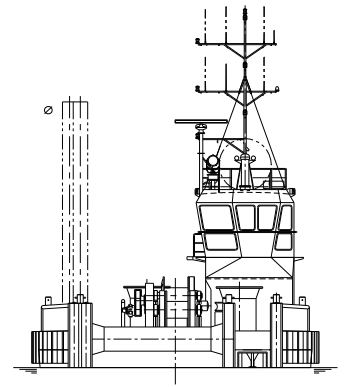
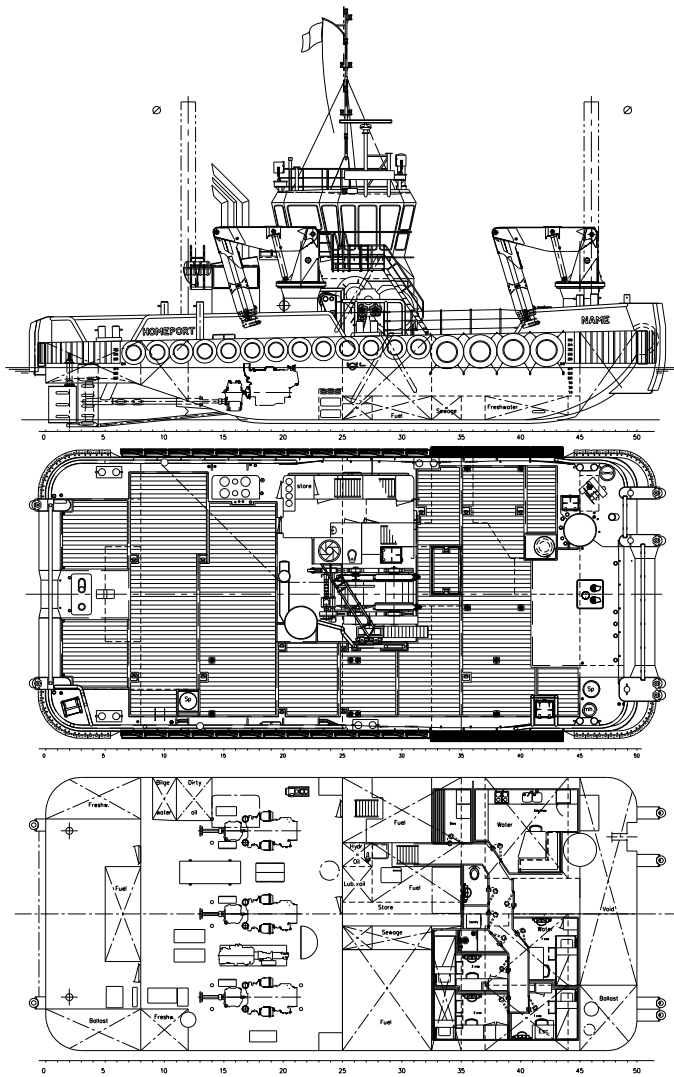
ANCHOR	270 kg Pool TW (HHP)
ANCHOR WINCH	Hydraulically driven CAW-H-136
DECK CRANE	1x Heila HLRM 230-4SLK 9.8T @ 16.5m 1x Heila HLRM 230-4SLK 9.8T @ 16.5m
ANCHOR HANDLING / TOWING WINCH	AHW-H-1000 double drum in waterfall execution
CAPACITY	Towing 50 ton at 10 m/min pulling force (1 <sup>st</sup> layer) Towing 90 ton brake holding force (1 <sup>st</sup> layer) Anchor 100 ton at 5 m/min pulling force (1 <sup>st</sup> layer) Anchor 150 ton brake holding force (1 <sup>st</sup> layer)
TOWING PINS	2x triple pin type
TUGGER WINCH	8ton @ 15m/ min
CAPSTAN	5 ton at 30 m/min

### ACCOMMODATION

Comfortable heated and air-conditioned accommodation for 6 persons in 4 cabins, galley, sanitary facilities, etc.

### NAUTICAL AND COMMUNICATION EQUIPMENT GMDSS AREA 2

SEARCH LIGHTS	2x Pesch 2000 W
RADAR SYSTEM	1x Furuno, FAR 2117
RADAR SYSTEM (OPTIONAL)	1x Furuno, FAR 8062
COMPASS	1x Cassens & Plat, Reflecta 1
GYRO COMPASS	1x Anshuetz, Standard 22
AUTOPILOT	1x Sea pilot 75
GPS	1x Furuno, GP-150 D
ECHOSOUNDER	1x Furuno, FE-700
SPEEDLOG	1x Furuno, DS-80
AIS	1x Furuno, FA-150
INTERCOM	Sigma-700
VHF	2x Sailor, RT6222, with DSC
HANDHELD VHF	2x TR-20
SSB	1x Furuno, FS-1570
INMARSAT - C	2x TT-3000E
NAVTEX	1x Furuno, NX-700
WATCH ALARM	1x Marble, 421



MAIN PARTICULARS	
LENGTH oo.	26.00 m.
BEAM mid.	11.50 m.
DEPTH 1/2L	3.50 m.
DRAFT max.	2.25 m. from base

Items marked with ø are optional

# DAMEN MULTI CAT<sup>®</sup> 2611

"YN 571664"

## DAMEN

DAMEN SHIPYARDS HARDINXVELD

Member of the DAMEN SHIPYARDS GROUP



Rivierdijk 544  
3371 EB Hardinxveld-Giessendam

P.O. Box 60  
3370 AB Hardinxveld-Giessendam  
The Netherlands

phone +31 (0)184 61 30 88  
fax +31 (0)184 61 77 93

info@damen-hardinxveld.nl  
www.damenshipyardhardinxveld.nl

© No part of the leaflet may be reproduced in any form, by print, photo print, microfilm, or any other means, without written permission from Damen Shipyards Hardinxveld