



DAMEN MULTI CAT[®] 2510 "SD NAVIGATOR"

GENERAL

YARD NUMBER	519302
DELIVERY DATE	July 2009
BASIC FUNCTIONS	Diving and trials support, coastal service
CLASSIFICATION	Lloyds Register ✱ 100 A1 Harbour, Towing, Buoy laying and Light Tender Specified Coastal Service [✱] LMC UMS
FLAG	United Kingdom
OWNER	Serco Denholm Marine Services Limited, U.K.

DIMENSIONS

LENGTH O.A.	25.54 m
BEAM O.A.	10.64 m
DEPTH AT SIDES	3.35 m
DRAUGHT AFT	2.34 m
DISPLACEMENT	362 ton

TANK CAPACITIES

FUEL OIL	40.0 m ³
FRESH WATER	21.2 m ³
SEWAGE	2.8 m ³
LUBRICATION OIL	2.8 m ³
BILGE WATER	2.8 m ³
DIRTY OIL	1.3 m ³
HYDRAULIC OIL	1.3 m ³
WATERBALLAST	67.2 m ³

PERFORMANCES (TRIALS)

SPEED	8.4 knots
-------	-----------

PROPULSION SYSTEM

MAIN ENGINES	2x Caterpillar C18 / B
TOTAL POWER	714 bkW (957 bhp) at 1800 rpm
GEARBOXES	2x Reintjes WAF 164L, 4.56 : 1
PROPULSION	2x Promarin fixed pitch propellers (1350 mm prop. diameter)
NOZZLES	2x Van de Giessen Optima with st.st. innerring
BOW THRUSTER	Delta-2k with Ø 1000 mm propeller

AUXILIARY EQUIPMENT

GENERATOR SETS	2x Caterpillar C 4.4 T, 86.0 kVA, 230/400 V, 50 Hz
ALARM SYSTEM	Engines, gearboxes + bilge alarm
FLOODLIGHT	2x150 Watt, one on fore and one on aft deck
BILGE PUMP/GS PUMP	2x Sterling AKHK 5101, 20 m ³ /hr at 14 m.w.g., 1x main engine driven, 1x electrically driven
FRESH WATER HEATER	Gesta 80 liter
SEWAGE TREATMENT PLANT	Hamann, Supermini
HYDRAULIC POWERPACK	Diesel driven Caterpillar C18, 448 kW at 1800 rpm

DECK LAY-OUT

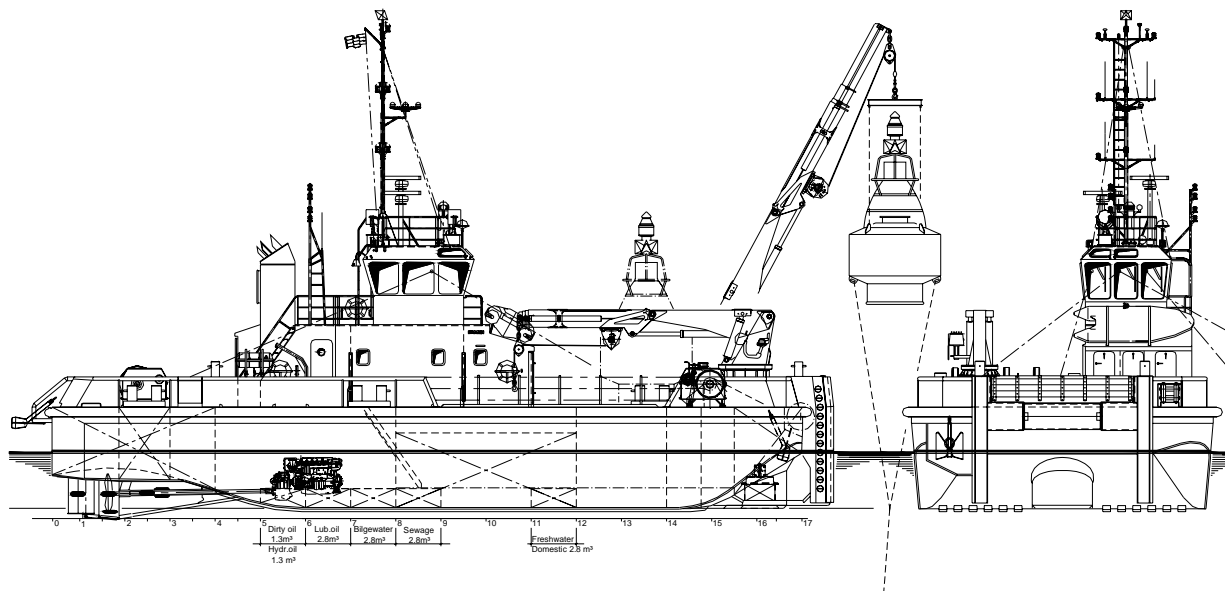
ANCHOR WITH CHAIN	Pool HHP type, 225 kg + spare anchor
ANCHOR WINCHES	2x Kraaijeveld, hydraulically driven, 20 ton at 5 m/min, 25 ton brake
BULLET/MOORING WINCHES	Hydraulically driven 9 ton at 20 m/min, 12 ton brake
DECK CRANE	Hydraulic Heila HLRM 140-3SL Capacity 9.0 ton at 7 m. The crane is fitted with a hydraulic winch, 9.0 ton lifting capacity Diameter 900 mm, 2626 mm width Double drum hydraulic winch pull 20 ton at 5 m/min with warping head and wildcat
BOW ROLLER	
DECK WINCH	

ACCOMMODATION

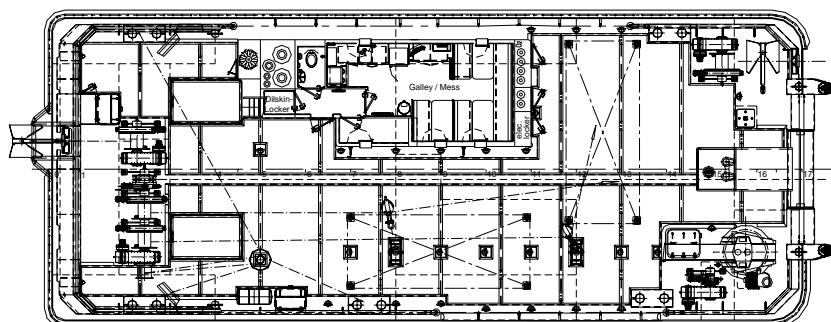
Wheelhouse, day-room/ pantry and sanitary space on main deck. Below main deck three double crew cabins, sanitary spaces with shower, a laundry and workshop are arranged.

NAUTICAL AND COMMUNICATION EQUIPMENT

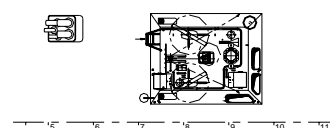
SEARCHLIGHT	Pesch 1000 W
RADAR SYSTEM	2x JRC JMA 5210-4
COMPASS	Magnetic Kotter type
GPS COMPASS	JRC JLR 30
AUTOPILOT	Alphatron Alphaseapilot MFC
DGPS	2x JRC J-NAV 500/JLR 4331
CHART PLOTTER / ECHO SOUNDER	SEIWA Explorer (Black Box)
VHF	1x Sailor Compact RT 5022 + 1x RT 2048
HAND HELD VHF	Sailor SP 3520 GMDSS approved
NAVTEX	JRC NCR-330
ANEMOMETER	Alphatron Alpha wind MFM



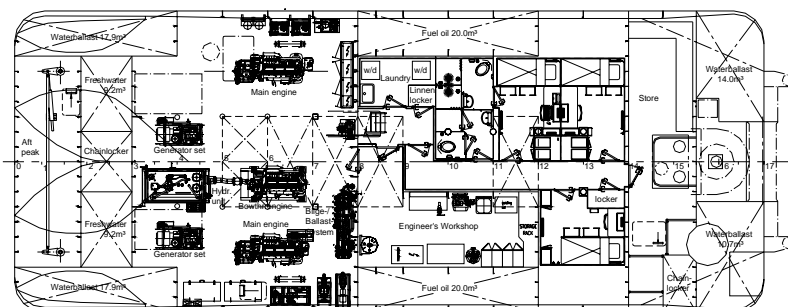
Maindeck



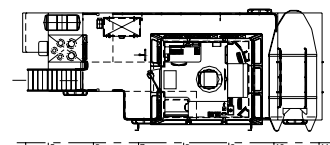
Topdeck



Below Maindeck



Bridgedeck



DAMEN MULTI CAT[®] 2510

"SD NAVIGATOR"

DAMEN

DAMEN SHIPYARDS GORINCHEM

Member of the DAMEN SHIPYARDS GROUP



Industrieterrein Avelingen West 20
4202 MS Gorinchem

P.O. Box 1
4200 AA Gorinchem
The Netherlands

phone +31 (0)183 63 99 11
fax +31 (0)183 63 21 89

info@damen.nl
www.damen.nl