

DAMEN MULTI CAT[®] 1908

"YN 518526-27-29-30"

GENERAL

YARD NUMBER	518526-27-29-30
BASIC FUNCTIONS	Towing, pushing, anchor handling dredging support
CLASSIFICATION	Bureau Veritas 1 ✕ HULL • MACH Special Service/ Workboat Coastal Area
PAINTING	Epoxy paint system

DIMENSIONS

LENGTH O.A.	19.05 m
BEAM O.A.	8.06 m
DEPTH AT SIDES	2.75 m
DRAUGHT AFT (APPROX.)	2.10 m
SCANTLINGS	hull plating 10 mm sheerstrake 30 mm deck plating 10 mm

TANK CAPACITIES

FUEL OIL	7.5 m ³
FRESH WATER	1.1 m ³
LUBRICATION OIL	0.8 m ³
DIRTY OIL	0.9 m ³
BILGE WATER	0.8 m ³
SEWAGE	0.9 m ³
FRESH WATER BALLAST AFT	12.9 m ³
FRESH WATER BALLAST FRONT	9.0 m ³
Ø FUEL OIL	46.6 m ³
Ø FRESH WATER	14.8 m ³

PERFORMANCES

BOLLARD PULL AHEAD	13.7 ton
SPEED	9.2 knots

PROPULSION SYSTEM

MAIN ENGINES	2x Caterpillar C18 TA/B
TOTAL POWER	894 bkW (1200 bhp) at 1800 rpm
GEARBOXES	2x Reintjes WAF 264L, 4.5:1
PROPELLERS	2x Kaplan II fixed pitch propellers
NOZZLES	2x 1350 mm Van de Giessen "Optima" with st.st. innerring
STEERING GEAR	Powered hydraulic 2x 45° with rudder indicator

AUXILIARY EQUIPMENT

GENERATOR SET	Caterpillar C4.4 NA, 47 kVA, 230/400 V, 50 Hz
HYDRAULIC SYSTEM	Main engine driven hydraulic pumps
ALARM SYSTEM	Engines, gearboxes + bilge alarm
BILGE PUMP/GS PUMP	2x Sterling VWSI 5013, 24 m ³ /hr at 10 m.w.g., electrically driven
FRESHWATER SYSTEM	Electrical pressure set and sewage pump
Ø F.W. TRANSFER PUMP	Sterling AKHK 5101, 20 m ³ /hr at 14 m.w.g.
Ø F.O. TRANSFER PUMP	Sterling AKHK 5101, 20 m ³ /hr at 14 m.w.g.

DECK LAY-OUT

ANCHOR WITH CHAIN	Pool HHP type, 1x 105 kg and 1x 48 kg
DECK CRANE	Hydraulic Heila HLRM 80-2S
	Lifting capacity 6.7 ton at 10.07 m
	Ø Hydraulic winch, 5 ton hoisting capacity
	Mampaey SWL 150 kN
	Diameter 900 mm, width 2500 mm, SWL 30 ton
	15 ton at 5 m/min
Ø TOWING HOOK	
BOW ROLLER	
ANCHOR HANDLING WINCH	

ACCOMMODATION

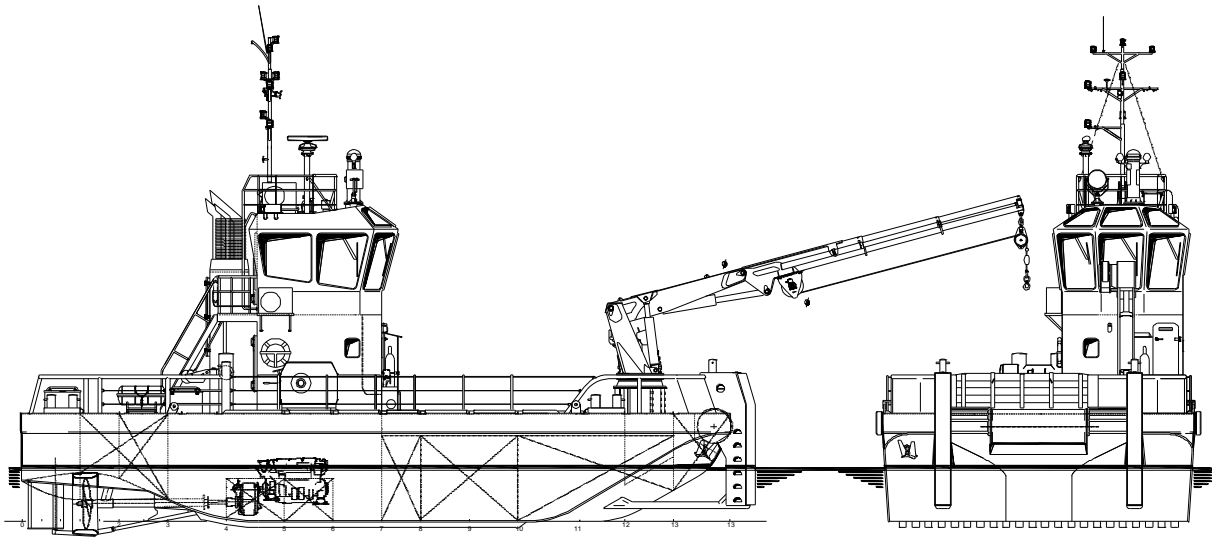
Wheelhouse, day-room / pantry and sanitary space. Below main deck at starboard a workshop/store. Port side Ø crew cabin with air-conditioning.

NAUTICAL AND COMMUNICATION EQUIPMENT

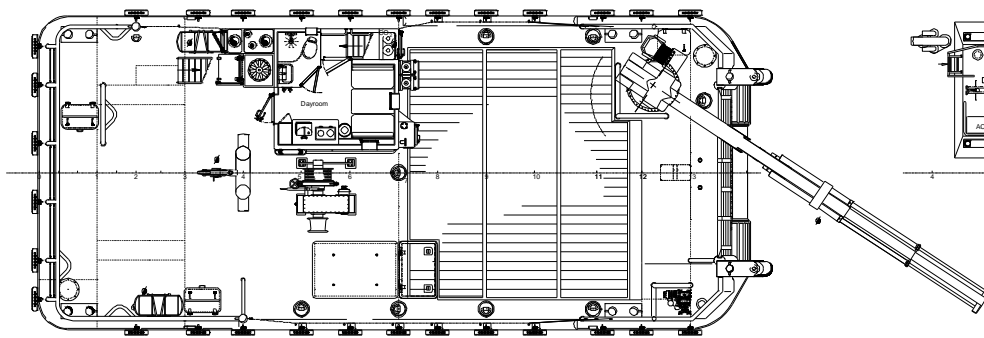
SEARCHLIGHT	Pesch 500 W 24V
RADAR SYSTEM	Furuno FR 8062
COMPASS	Magnetic Kotter type
GPS	Furuno GP-32
ECHO SOUNDER	Furuno LS-6100
VHF	Sailor 6248 or Ø 2x Sailor 6222
Ø HAND HELD VHF	2x Furuno TR 20
Ø AUTOPILOT	Simrad AP50
INTERCOM	6 stations
Ø NAVTEX	Furuno NX-700
Ø EPIRB	Jotron, Tron-40S
Ø SART	Jotron, Tron Sart
Ø AIS	Furuno FA-150

COMPLETE VESSEL ON STOCK

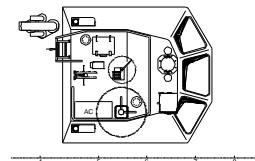
* PHOTOGRAPH SHOWS SIMILAR VESSEL / Ø = OPTIONAL EQUIPMENT



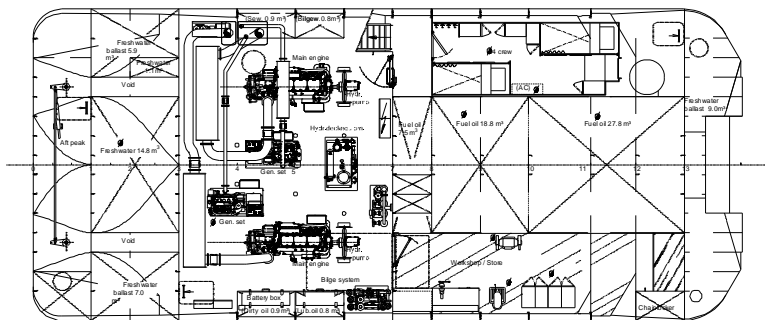
Maindeck



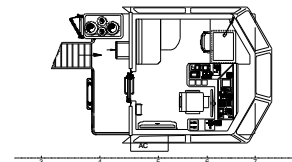
Topdeck



Below Maindeck



Bridgedeck



DAMEN MULTI CAT[®] 1908

"YN 518526-27-29-30"

DAMEN

DAMEN SHIPYARDS GORINCHEM

Member of the DAMEN SHIPYARDS GROUP



Industrieterrein Avelingen West 20
4202 MS Gorinchem

P.O. Box 1
4200 AA Gorinchem
The Netherlands

phone +31 (0)183 63 99 11
fax +31 (0)183 63 21 89

info@damen.com
www.damen.com