



## DAMEN MULTI CAT<sup>®</sup> 1908

"YN 518518"

**BUILT UNDER LICENSE FROM A SHIPBUILDING KIT SUPPLIED BY DAMEN TECHNICAL COOPERATION**

### GENERAL

YARD NUMBER	518518
DELIVERY DATE	October 2010 (Material Package)
BASIC FUNCTIONS	Towing, pushing, crane operations, diving support, deck cargo
CLASSIFICATION	Bureau Veritas I ✱ HULL MACH Spec. Service/Workboat, Coastal Area
FLAG	Pakistan
OWNER	Karachi Port Trust

### BUILDING YARD

NAME	Karachi Shipyard & Engineering Works Ltd.
COUNTRY	Pakistan

### DIMENSIONS

LENGTH O.A.	19.11 m
BEAM O.A.	8.46 m
DEPTH AT SIDES	2.75 m
DRAUGHT AFT	1.85 m
DISPLACEMENT	160 ton

### TANK CAPACITIES

FUEL OIL	7.5 m <sup>3</sup>
FRESH WATER	0.6 m <sup>3</sup>
LUBRICATION OIL	0.8 m <sup>3</sup>
SEWAGE	0.9 m <sup>3</sup>
DIRTY OIL	0.9 m <sup>3</sup>
WATERBALLAST	37.8 m <sup>3</sup>

### PERFORMANCES

BOLLARD PULL	7.4 ton(m)
SPEED	8.1 knots

### PROPULSION SYSTEM

MAIN ENGINES	2x Caterpillar 3406 C TA/ B
TOTAL POWER	448 bkW (600 bhp) at 1800 rpm
GEARBOXES	2x Reintjes WAF 164 / 3.964 : 1
PROPELLERS	2x Kaplan II fixed pitch propellers
NOZZLES	2x 1050 mm Van de Giessen Optima

### AUXILIARY EQUIPMENT

GENERATOR SET	Caterpillar C 4.4 TA, 230/400 V 108 kVA, 50 Hz
BILGE PUMPS	2x Sterling VWSI 5013, each 20 m <sup>3</sup> /hr 1x main engine driven, 1x electrically driven
COOLING SYSTEM	Closed cooling system
HYDROPHORE	Speck PY-2071/20, 20 l/min.
SEWAGE PUMP	Libellula, 6.6 m <sup>3</sup> /hr

### DECK LAY-OUT

ANCHORS	48/105 kg Pool (High Holding Power)
ANCHOR WINCH	EMCE, electric driven
DECK CRANE	Heila HLRM 65-3S, 5.4 ton at 10.58 meter, with 5 ton hydraulic winch
TOWING HOOK	Mampaey, 15 ton SWL
ANCHOR HANDLING WINCH	DMT, 5 ton pull at 5 m/min.
BOW ROLLER	Diameter 900 mm-2500 mm width
FENDERING	Rubber push bows, D-fender 200 x 200 sides and stern.
WORKDECK	Covered with wood
LIFE RAFT	RFD, 6 persons
DIVING EQUIPMENT	Two complete scuba diving and one air compressor

### ACCOMMODATION

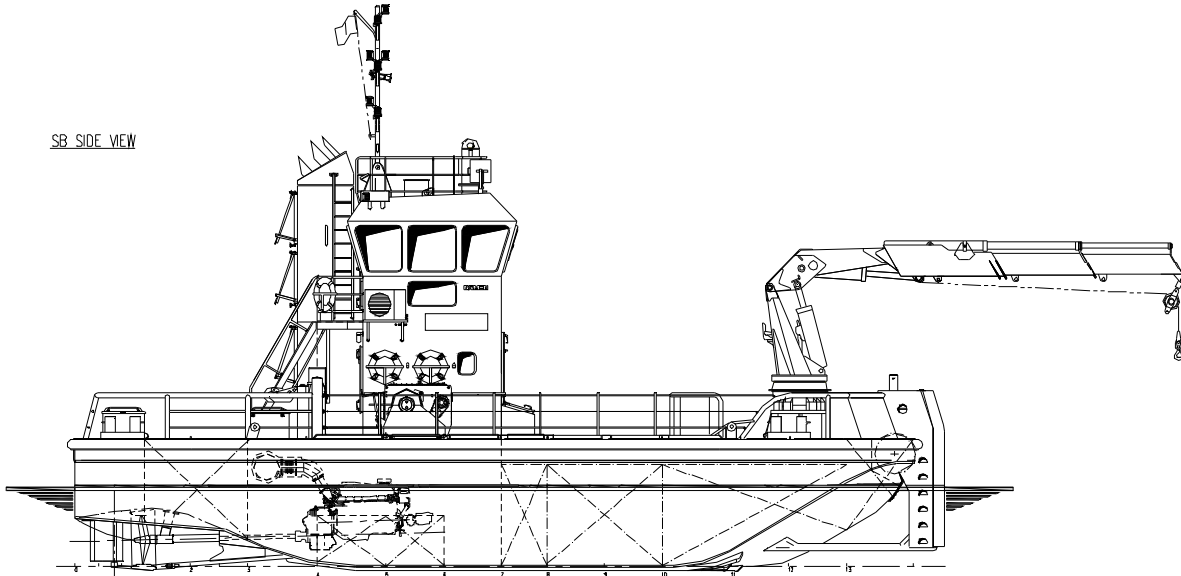
Air conditioned wheelhouse, insulated and finished with durable modern linings, acoustical Dampa ceiling and floating floor. Dayroom with kitchen unit. Toilet main deck and sanitary space below deck.

### NAUTICAL AND COMMUNICATION EQUIPMENT

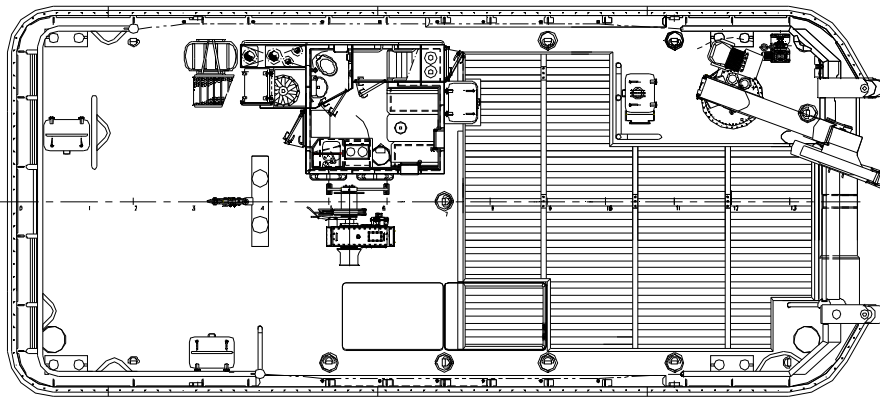
SEARCHLIGHT	1x Pesch, 500 W
COMPASS	Magnetic, Kottter type
GPS	Furuno GP-32
ECHOSOUNDER	Furuno LS-6100
VHF.	Sailor RT 2048
HANDHELD VHF	4x Jotron Tron TR-20

\* PICTURE SHOWS SIMILAR VESSEL \*

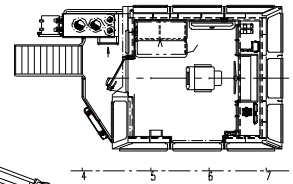
SB SIDE VIEW



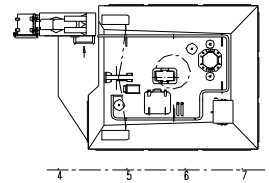
Maindeck



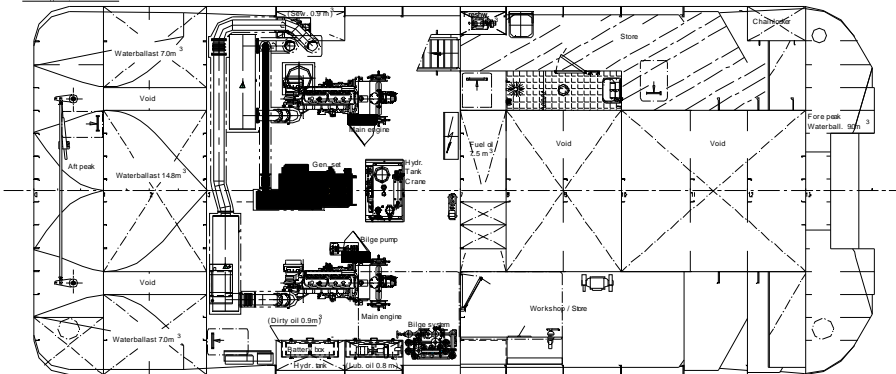
Bridgedeck



Topdeck



Below Maindeck



# DAMEN MULTI CAT<sup>®</sup> 1908

"YN 518518"

**DAMEN**

DAMEN SHIPYARDS GORINCHEM

Member of the DAMEN SHIPYARDS GROUP



Industrieterrein Avelingen West 20  
4202 MS Gorinchem

P.O. Box 1  
4200 AA Gorinchem  
The Netherlands

phone +31 (0)183 63 99 11  
fax +31 (0)183 63 21 89

info@damen.nl  
www.damen.nl