



# DAMEN MULTI CAT<sup>®</sup> 1908

## "CHICALA"

**BUILT UNDER LICENSE FROM A PARTIAL PREFABRICATED SHIPBUILDING KIT SUPPLIED BY DAMEN TECHNICAL COOPERATION**

### GENERAL

YARD NUMBER	518521
DELIVERY DATE	November, 2011
BASIC FUNCTIONS	Towing, pushing, fuel fresh water transfer, deck cargo
CLASSIFICATION	Bureau Veritas I ✕ HULL MACH Spec. Service/Workboat, Coastal Area

### BUILDING YARD

NAME	Damen Shipyards Capetown
COUNTRY	South Africa

### DIMENSIONS

LENGTH O.A.	19.11 m
BEAM O.A.	8.46 m
DEPTH AT SIDES	2.75 m
DRAUGHT AFT	2.35 m
DISPLACEMENT	230 ton

### TANK CAPACITIES

FUEL OIL	7.5 m <sup>3</sup>
FUEL OIL	46.6 m <sup>3</sup>
FRESH WATER	1.1 m <sup>3</sup>
FRESH WATER	14.8 m <sup>3</sup>
LUBRICATION OIL	0.8 m <sup>3</sup>
SEWAGE	0.9 m <sup>3</sup>
DIRTY OIL	0.9 m <sup>3</sup>
WATERBALLAST	22.9 m <sup>3</sup>

### PERFORMANCES (TRIALS)

BOLLARD PULL	14.9 ton(m)
SPEED	10.0 knots

### PROPULSION SYSTEM

MAIN ENGINES	2x Caterpillar C18 ACERT / A
TOTAL POWER	894 bkW (1200 bhp) at 1800 rpm
GEARBOXES	2x Reintjes WAF 264L / 4.5 : 1
PROPELLERS	2x Kaplan II fixed pitch propellers
NOZZLES	2x 1350 mm Van de Giessen Optima

### AUXILIARY EQUIPMENT

GENERATOR SET	Caterpillar C4.4NA, 230/400V, 43kVA, 50Hz
BILGE PUMPS	Sterling VWSI 5013, each 20 m <sup>3</sup> /hr
COOLING SYSTEM	Closed cooling system
HYDROPHORE	Speck PY-2071/20, 20 l/min.
SEWAGE PUMP	Libellula, 6.6 m <sup>3</sup> /hr
WATER TRANSFER PUMP	Sterling AKHK 5101, 20 m <sup>3</sup> /hr a1.4 bar
FUEL TRANSFER PUMP	Sterling AKHK 5101, 20 m <sup>3</sup> /hr a1.4 bar

### DECK LAY-OUT

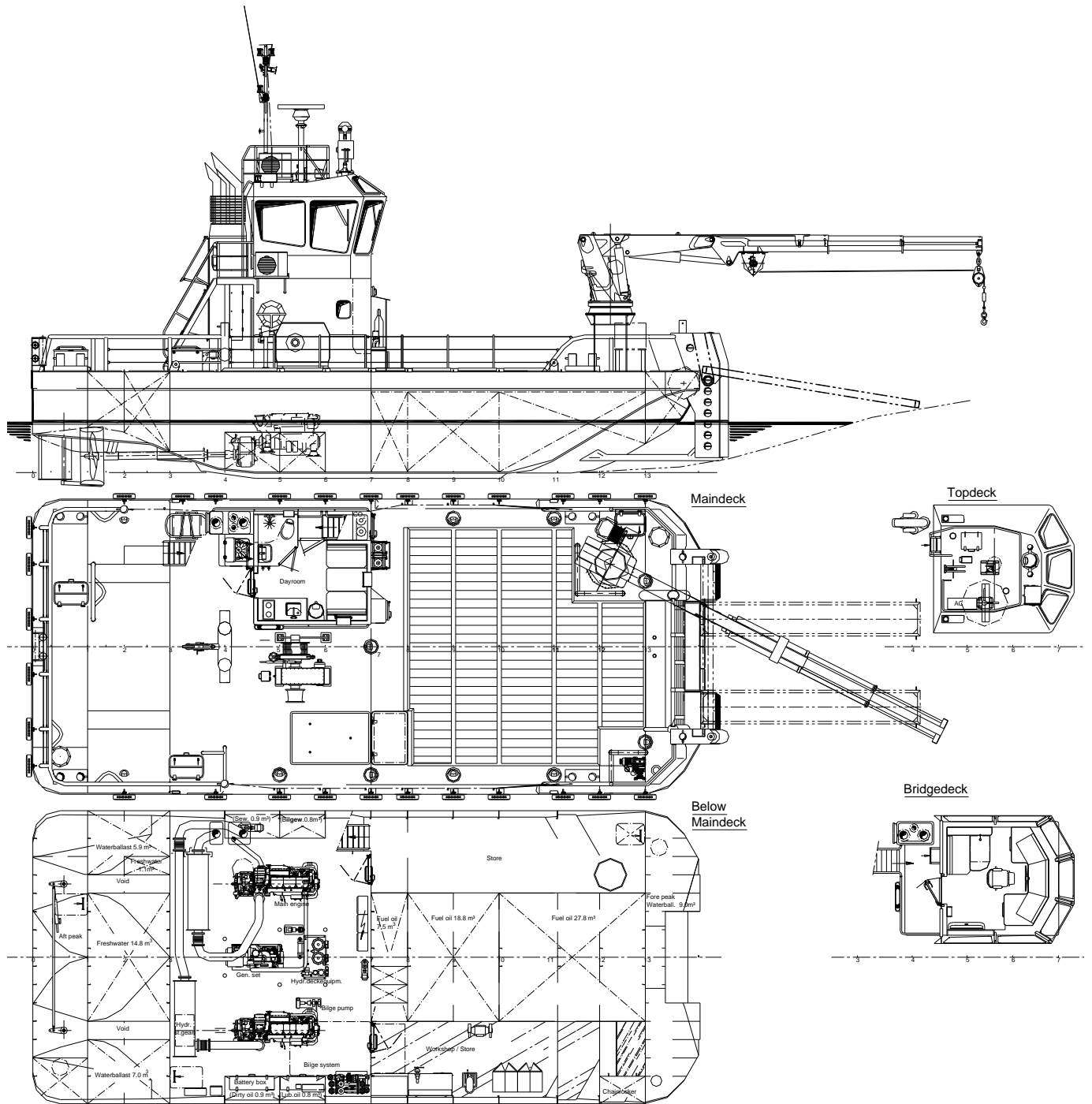
ANCHORS	105kg + 48kg spare Pool (H.H.P.)
ANCHOR WINCH	EMCE, electric driven
DECK CRANE	Heila HLRM 80-2S, 6.4 ton at 10.07 meter, with 5 ton hydraulic winch
BOW ROLLER	Diameter 900 mm-2500 mm width, SWL 30 ton
ANCHOR HANDLING WINCH	Hydraulic, 15 ton pull at 5 m/min.
TOWING HOOK	Mampaey, 15 ton SWL
PORTABLE RAMPS	2x ramp 6.0 x 0.9 for 25 tons
FENDERING	Rubber push bows
WORKDECK	Covered with firwood
LIFE RAFT	RFD, 6 persons

### ACCOMMODATION

Air conditioned wheelhouse, insulated and finished with durable modern linings, acoustical Dampa ceiling and floating floor. Dayroom with kitchen unit and toilet on main deck and store / workshop below deck.

### NAUTICAL AND COMMUNICATION EQUIPMENT

SEARCHLIGHT	1x Pesch, 500 W
RADAR	Furuno FR-8062
GPS	Furuno GP-32
COMPASS	Magnetic, Kotter type
ECHOSOUNDER	Furuno LS-6100
VHF.	Sailor RT 2048
SSB RADIO TELEPHONE	Furuno FS-1503
EPIRB	Jotron TRON-40S



# DAMEN MULTI CAT<sup>®</sup> 1908

"CHICALA"

**DAMEN**

DAMEN SHIPYARDS GORINCHEM

Member of the DAMEN SHIPYARDS GROUP



Industrieterrein Avelingen West 20  
4202 MS Gorinchem

P.O. Box 1  
4200 AA Gorinchem  
The Netherlands

phone +31 (0)183 63 99 11  
fax +31 (0)183 63 21 89

info@damen.nl  
www.damen.nl