



DAMEN MULTI CAT[®] 1908 "DUNAF"

BUILT UNDER LICENSE FROM A SHIPBUILDING KIT SUPPLIED BY DAMEN TECHNICAL COOPERATION

GENERAL

YARD NUMBER	518517
DELIVERY DATE	October 2010
BASIC FUNCTIONS	Towing, pushing, fuel/ fresh water transfer, buoy handling, heavy lift
CLASSIFICATION	Bureau Veritas I ✱ HULL MACH Spec.Service/Workboat, Coastal Area
FLAG	Yemen
OWNER	Yemen Gulf of Aden Ports Corporation

BUILDING YARD

NAME	Abu Dhabi Ship Building
COUNTRY	Abu Dhabi, United Arab Emirates

DIMENSIONS

LENGTH O.A.	18.91 m
BEAM O.A.	8.06 m
DEPTH AT SIDES	2.75 m
DRAUGHT AFT	2.27 m
DISPLACEMENT	211 ton

TANK CAPACITIES

FUEL OIL	35.3 m ³
FRESH WATER	0.6 m ³
CARGO FRESH WATER	14.8 m ³
LUBRICATION OIL	0.8 m ³
SEWAGE	0.9 m ³
BILGE WATER	0.8 m ³
WATERBALLAST	23.8 m ³

PERFORMANCES (TRIALS)

BOLLARD PULL	12.6 ton(m)
SPEED	9.1 knots

PROPULSION SYSTEM

MAIN ENGINES	2x Caterpillar C18 TA/ B
TOTAL POWER	714 bkW (958 bhp) at 1800 rpm
GEARBOXES	2x Reintjes WAF 164L / 4.56 : 1
PROPELLERS	2x Kaplan II fixed pitch propellers
NOZZLES	2x 1350 mm Van de Giessen Optima

AUXILIARY EQUIPMENT

GENERATOR SET	Caterpillar C 4.4 NA, 230/400 V 47 kVA, 50 Hz
BILGE PUMPS	2x Sterling VWSI 5013, each 20 m ³ /hr 1x main engine driven, 1x electrically driven
COOLING SYSTEM	Closed cooling system
HYDROPHORE	Speck PY-2071/20, 20 l/min.
SEWAGE PUMP	Libellula, 6.6 m ³ /hr
FUEL TRANSFER PUMP	Sterling AKHK 5101, 20 m ³ /hr
WATER TRANSFER PUMP	Sterling AKHK 5101, 20 m ³ /hr

DECK LAY-OUT

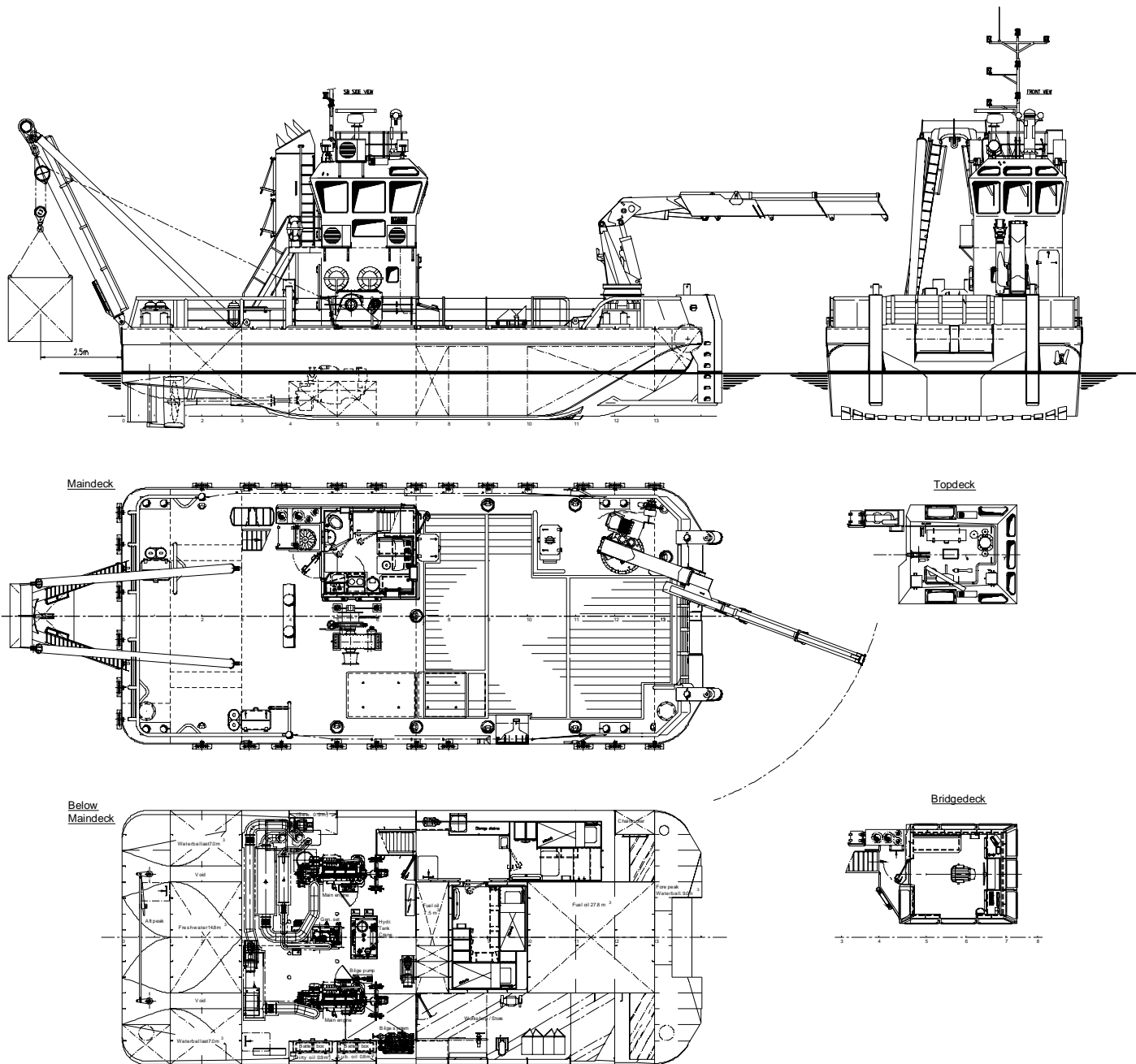
ANCHORS	48/105 kg Pool (High Holding Power)
DECK CRANE	Heila HLRM 65-2S, 7.15 ton at 8.44 meter, with 5 ton hydraulic winch
TOWING HOOK	Mampaey, 15 ton SWL
ANCHOR HANDLING WINCH	Kraaijeveld, 15 ton pull at 5 m/min.
BOW ROLLER	Diameter 900 mm-2500 mm width
A-FRAME	20 ton SWL
FENDERING	Rubber push bows, fender tires around hull
WORKDECK	Covered with wood, buoy chain clamp at SB
LIFE RAFT	RFD, 6 persons

ACCOMMODATION

Air conditioned wheelhouse, insulated and finished with durable modern linings, acoustical Dampa ceiling and floating floor.
Air conditioned dayroom with kitchen unit. Sanitary space. Below deck airconditioned cabins are arranged for a crew of 6.

NAUTICAL AND COMMUNICATION EQUIPMENT

SEARCHLIGHT	2x Pesch, 500 W
RADAR SYSTEM	Furuno FR-8062
COMPASS	Magnetic, Kotter type
GPS	Furuno GP-32
ECHOSOUNDER	Furuno LS-6100
VHF.	Sailor RT 5022
HANDHELD VHF	2x Jotron Tron TR-20



DAMEN MULTI CAT[®] 1908

"DUNAFI"

DAMEN

DAMEN SHIPYARDS GORINCHEM

Member of the DAMEN SHIPYARDS GROUP



Industrieterrein Avelingen West 20
4202 MS Gorinchem

P.O. Box 1
4200 AA Gorinchem
The Netherlands

phone +31 (0)183 63 99 11
fax +31 (0)183 63 21 89

info@damen.nl
www.damen.nl