



DAMEN STAN TUG® 2208 "REVOLUCIÓN"

BUILT UNDER LICENSE FROM A PREFABRICATED SHIPBUILDING KIT SUPPLIED BY DAMEN TECHNICAL COOPERATION.

GENERAL

YARD NUMBER	509635
DELIVERY DATE	March 2010
BASIC FUNCTIONS	Towing, mooring and fire fighting operations
CLASSIFICATION	Lloyd's Register ✕100A1,Tug [✕]LMC Inc. tonnage and loadline cert.
OWNER	INEA
COUNTRY	Venezuela

BUILDING YARD

NAME	Damex Shipbuilding & Engineering
COUNTRY	Cuba

DIMENSIONS

LENGTH O.A.	22.64 m
BEAM O.A.	7.84 m
DEPTH AT SIDES	3.74 m
DRAUGHT AFT	3.50 m
SCANTLING	hull 10 mm, sheerstrake 20 mm

TANK CAPACITIES

FUEL OIL	36.7 m ³
FRESH WATER	8.6 m ³
FOAM	3.4 m ³
LUBRICATION OIL	2.9 m ³
DIRTY OIL	1.6 m ³
SEWAGE	1.7 m ³
BILGE WATER	2.6 m ³
WATERBALLAST	13.4 m ³

PERFORMANCES

BOLLARD PULL	37.3 ton(m)
SPEED	11.7 knots

PROPULSION SYSTEM

MAIN ENGINES	2x Caterpillar 3512B TA / B
TOTAL POWER	2028 bkW (2720 bhp) at 1600 rpm
GEARBOXES	2x Reintjes WAF 665L / 5.95 : 1
PROPELLERS	2x Kaplan II fixed pitch propellers
NOZZLES	2x 2200 mm Van de Giessen

AUXILIARY EQUIPMENT

GENERATOR SETS	2x Cat C 4.4 T, 440 V, 73 kVA, 60 Hz
BILGE PUMPS	2x Sterling SIHI AKHA 5101 each 20 m ³ /hr
BILGE WATER SEPARATOR	Facet CPS 2.5 MKIII, 0.5 m ³ /hr
FUEL OIL PUMPS	2x Sterling SIHI AOHA 3101 each 4.5 m ³ /hr
FUEL OIL SEPARATOR	Westfalia OTC 2-02-137, non-selfcleaning
COOLING SYSTEM	Closed cooling system
FIFI SET	Diesel driven pump 600 m ³ /hr at 10 bar
FIFI MONITORS	2x water/foam of 300 m ³ /hr each

DECK LAY-OUT

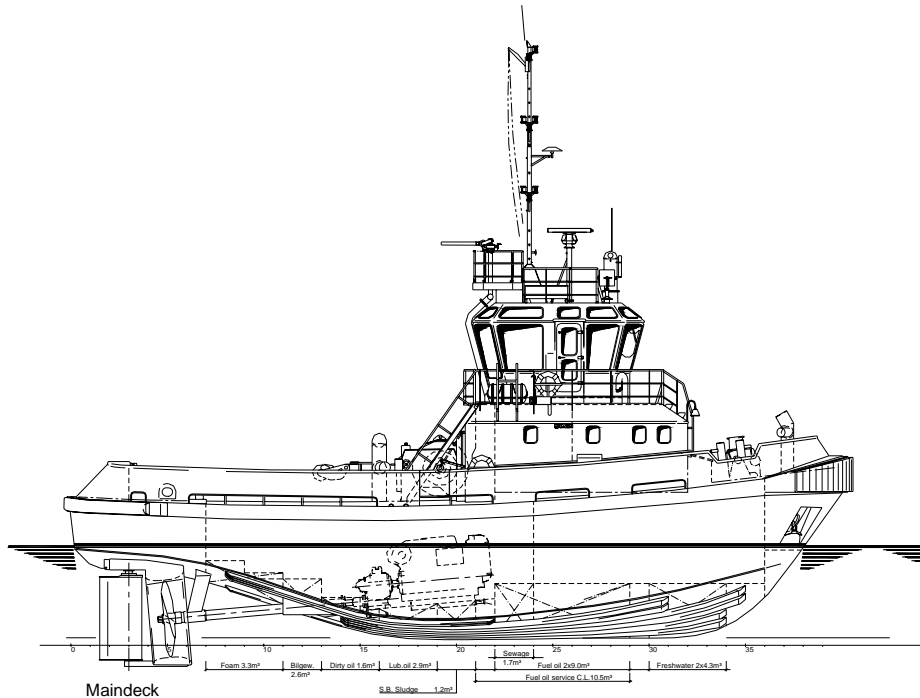
ANCHORS	2x 225 kg Pool (High Holding Power)
CHAIN	247.5 m, chain 16 mm (stud link)
ANCHOR WINCH	Electric, 10 m/min, incl. warping head
CAPSTAN	Electric, 3 ton at 15 m/min.
TOWING HOOK	Mampaey, 45 ton
TOWING WINCH AFT	Hydraulically driven 10 ton pull at 10 m/min or 5 ton at 23 m/min. 100 ton brake
FENDERING	Rubber bow and stern fenders

ACCOMMODATION

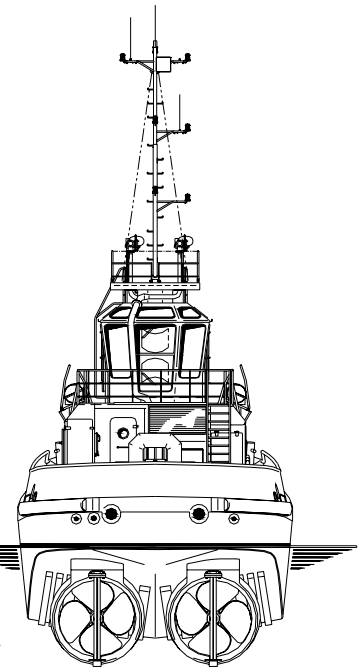
Accommodation for 8 persons, completely insulated and finished with durable modern linings, acoustical Dampa ceiling in the wheelhouse and floating floors. Air-conditioned accommodation, with 4 cabins, galley, mess/dayroom and sanitary facilities.

NAUTICAL AND COMMUNICATION EQUIPMENT

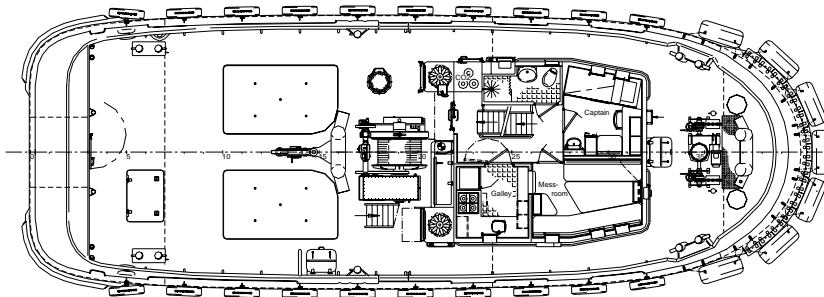
SEARCHLIGHT	Pesch, 1000 W
RADAR SYSTEM	Furuno FR-8062
COMPASS	Magnetic, Kotter type
AUTOPILOT	Simrad AP-50
GPS	Furuno GP-150
ECHOSOUNDER	Furuno LS-6100
VHF	Sailor RT5022, 25 W
SSB	Furuno FS-1570



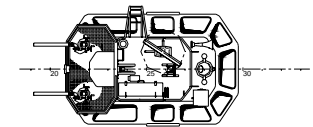
Maindeck



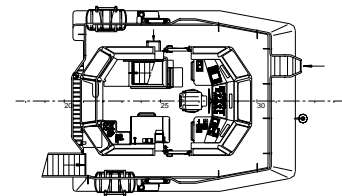
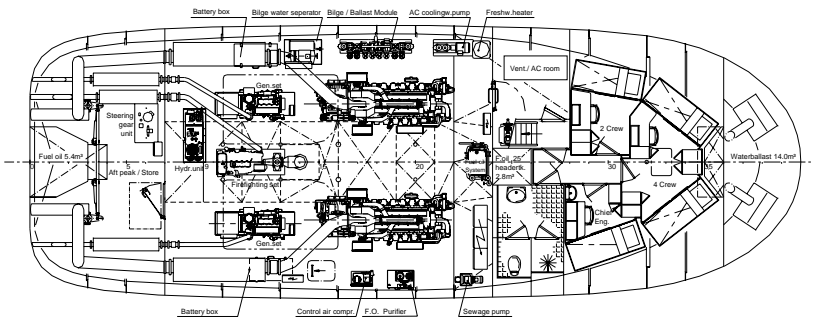
Topdeck



Below Maindeck



Bridgedeck



DAMEN STAN TUG[®] 2208

" REVOLUCIÓN "



DAMEN SHIPYARDS GORINCHEM

Member of the DAMEN SHIPYARDS GROUP



Industrieterrein Avelingen West 20
4202 MS Gorinchem

P.O. Box 1
4200 AA Gorinchem
The Netherlands

phone +31 (0)183 63 99 11
fax +31 (0)183 63 21 89

info@damen.nl
www.damen.nl