



DAMEN STAN TUG® 1606 "WADI WURAYAH"

BUILT UNDER LICENSE FROM A PREFABRICATED SHIPBUILDING KIT SUPPLIED BY DAMEN TECHNICAL COOPERATION.

GENERAL

YARD NUMBER	503147
DELIVERY	2010
BASIC FUNCTIONS	Towing and mooring operations
CLASSIFICATION	Lloyd's Register ✳️100 A1 Launch Specified Coastal Service ✳️ LMC

BUILDING YARD

NAME	Albwardy Marine Engineering
COUNTRY	Dubai, U.A.E.

DIMENSIONS

LENGTH O.A.	16.56 m
BEAM O.A.	5.54 m
DEPTH AT SIDES	2.54 m
DRAUGHT AFT	2.35 m
DISPLACEMENT	94 ton (m)

TANK CAPACITIES

FUEL OIL	14.2 m ³
FRESH WATER	1.1 m ³
SEWAGE	0.7 m ³
SLUDGE	0.5 m ³
DISPERSANT	1.2 m ³

PERFORMANCES

BOLLARD PULL	15.8 ton(m)
SPEED	11.1 knots

PROPULSION SYSTEM

MAIN ENGINES	2x MAN D2842 LE/HD
TOTAL POWER	882 bkW (1182 bhp) at 1800 rpm
GEARBOXES	Reintjes WAF 264L / 4.5:1
PROPELLERS	CuNiAl fixed pitch propeller
NOZZLES	2x 1350 mm Van de Giessen Optima

AUXILIARY EQUIPMENT

MAIN GENERATOR SETS	2x Cat C2.2T, 230/400 V, 28 kVA, 50 Hz
BILGE PUMPS	2x Sterling VWSI 5013 each 20 m/hr
BILGE WATER SEPARATOR	Facet CPS-2.5 MKIII + EBM 14X
COOLING SYSTEM ME'S	Combined seawater and keel cooling system
COOLING SYSTEM AE'S	Closed keel cooling system
OIL POLLUTION CONTROL	Electrically driven dispersant twin pump set with 2 spray booms
ER FIRE FIGHTING	Fixed fire fighting system Novec 1230

DECK LAY-OUT

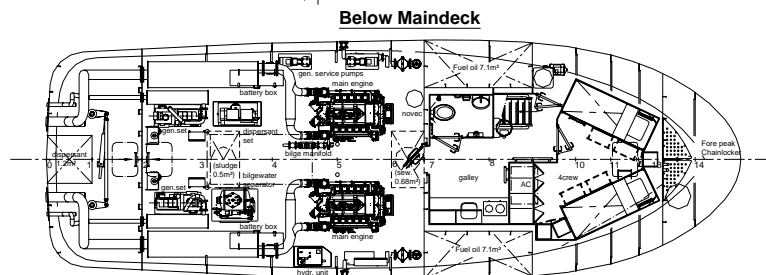
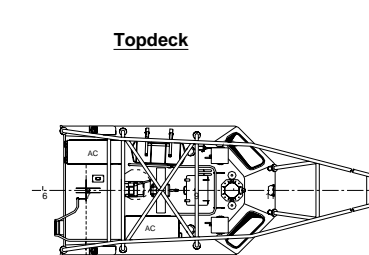
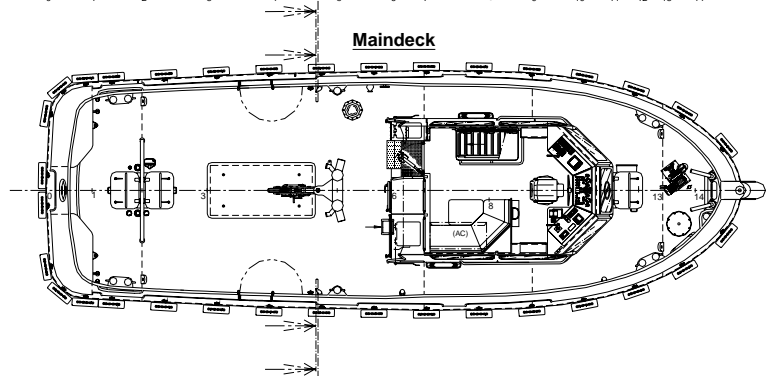
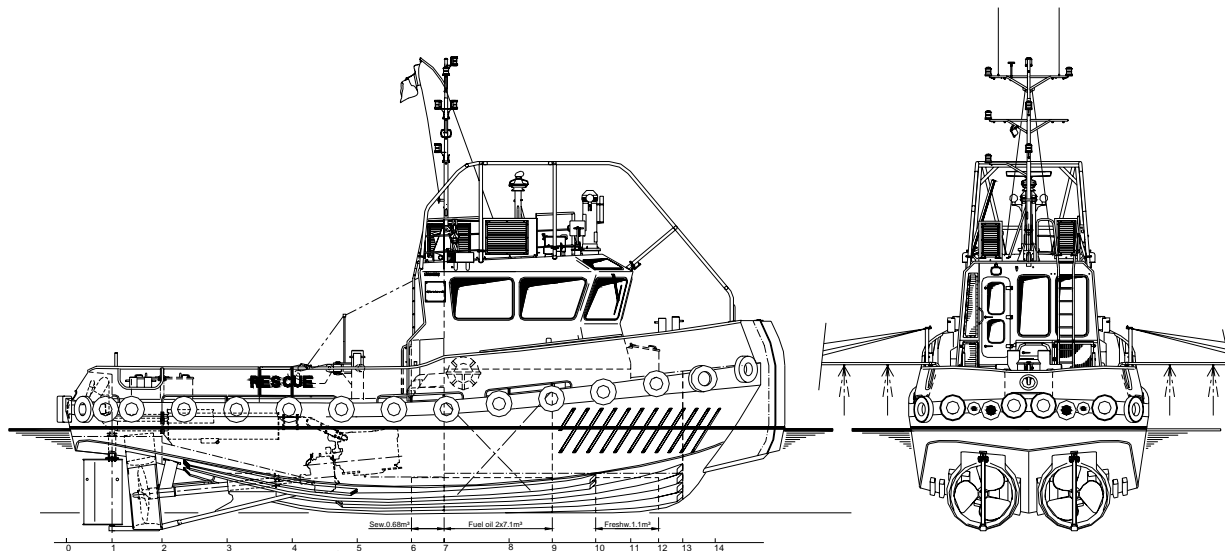
ANCHORS	80 kg/24 kg Pool (High Holding Power)
CHAIN	100/ 9 m (main/spare), chain 13 mm
ANCHOR WINCH	EMCE, electrically driven
CAPSTAN	EMCE, electric, 1.3 ton at 9 m/min
TOWING HOOK	Mampaey, Disc type, SWL 25.4 ton
LIFE RAFT	RFD 6 persons

ACCOMMODATION

The accommodation is completely insulated and finished with durable modern linings, acoustical Dampa ceiling in the wheelhouse and a floating floor. The air-conditioned wheelhouse is fitted with a L-shaped settee with table and a control position. Below deck a galley, sanitary facilities and an air-conditioned 4-berth crew cabin are provided. Windows are fitted in aluminum frames.

NAUTICAL AND COMMUNICATION EQUIPMENT

SEARCHLIGHT	2x Pesch, 500 W
RADAR SYSTEM	Furuno FR-8062
COMPASS	Magnetic – Kottter type
GPS	Furuno, GP-32
ECHOSOUNDER	Furuno, LS 6100
VHF	2x Sailor, RT 2048, 25 W
VHF HAND HELD	3x Motorola GP 380 Atex appr. 3 Watt
UHF BASE STATION	2x Motorola GM340, 10 Watt
UHF HAND HELD	2x Motorola GM340, 3 Watt



DAMEN STAN TUG[®] 1606

"WADI WURAYAH"

DAMEN

DAMEN SHIPYARDS GORINCHEM

Member of the DAMEN SHIPYARDS GROUP



Industrieterrein Avelingen West 20
4202 MS Gorinchem

P.O. Box 1
4200 AA Gorinchem
The Netherlands

phone +31 (0)183 63 99 11
fax +31 (0)183 63 21 89

info@damen.nl
www.damen.nl