



## DAMEN STAN TUG® 1606 "SVITZER TYLOS"

### GENERAL

YARD NUMBER	503172
DELIVERY DATE	February 2013
BASIC FUNCTIONS	Towing, mooring, pushing
CLASSIFICATION	Bureau Veritas 1 ✕ Hull • MACH TUG Coastal Area incl. tonnage certificate
FLAG	Bahrain
OWNER	Svitzer Bahrain SPC

### DIMENSIONS

LENGTH O.A.	16.76 m
BEAM O.A.	5.94 m
DEPTH AT SIDES	2.54 m
DRAUGHT AFT	2.21 m
DISPLACEMENT (98% CONSUMABLES)	90.7 ton

### TANK CAPACITIES

FUEL OIL	14.2 m <sup>3</sup>
FRESH WATER	1.1 m <sup>3</sup>
SEWAGE	0.7 m <sup>3</sup>
BILGE WATER/SLUDGE	0.5 m <sup>3</sup>

### PERFORMANCES (TRIALS)

BOLLARD PULL AHEAD	16.0 ton(m)
BOLLARD PULL ASTERN	8.8 ton(m)
SPEED	11.2 knots

### PROPULSION SYSTEM

MAIN ENGINES	2x Caterpillar C18 TA / B
TOTAL POWER	894 bkW (1216 bhp) at 1800 rpm
GEARBOXES	2x Reintjes WAF series
PROPELLERS	2x Kaplan II fixed pitch propellers
NOZZLES	2x 1350 mm Van de Giessen "Optima" with st.st. innerrings
RUDDERS	2x streamlined, double plates
STEERING GEAR	Powered hydraulic 2x 45°, with rudder indicator

### AUXILIARY EQUIPMENT

GENERATOR SET	Caterpillar C2.2 NA, 230/400 V, 20.3 kVA, 50 Hz
ALTERNATOR 24 V	2x main engine driven
BATTERY SETS	2x 24 V 200 Ah (with change over), 2 x 24 V, 125 Ah
ALARM SYSTEM	Engines, gearboxes, bilge alarm, fire detection E.R.
BILGE/GS PUMP	Elec. driven, Sterling SIHL VWSI 5013, 15 m <sup>3</sup> /hr
FUEL OIL SYSTEM	Duplex filters, water separators + SOS valve
COOLING SYSTEM	Closed cooling system
WATER SYSTEM	Electr.driven freshwater hydrophore 24V
FRESH WATER HEATER	230 / 400 V, 30 liter
VENTILATION	Mechanical ventilation in E.R. 10.500 m <sup>3</sup> /hr

### DECK LAY-OUT

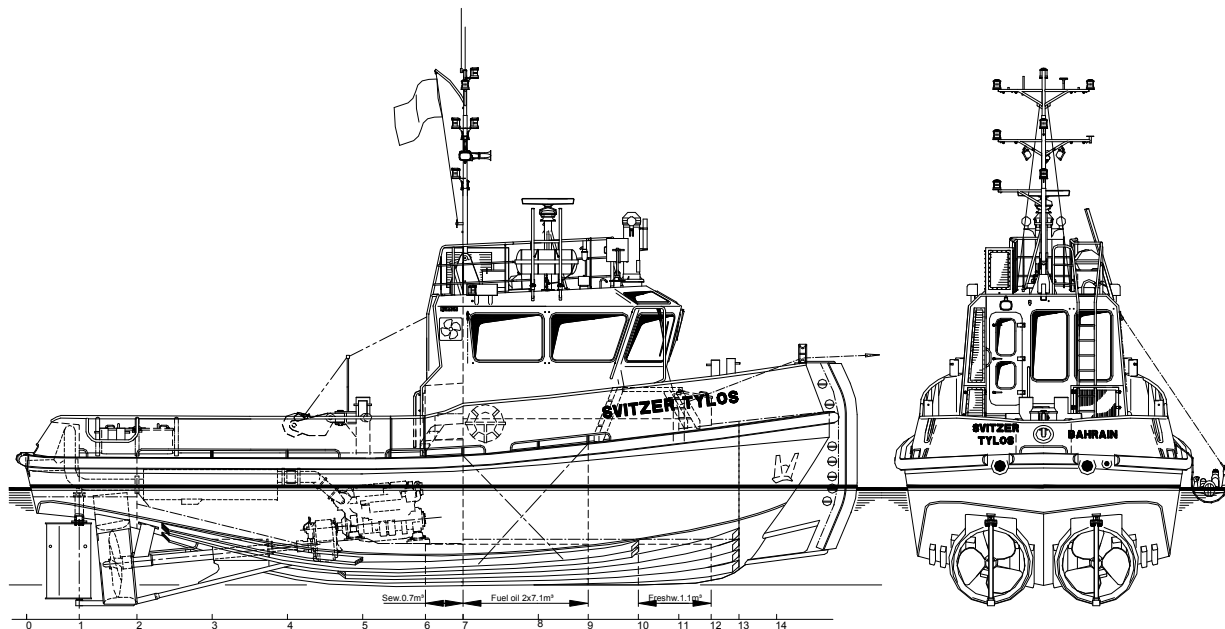
ANCHORS	2x 80 kg Pool (HHP)
CHAIN (TOT.)	100 m shortlink chain 13 mm diameter
ANCHOR WINCH	Electrical for one anchor
CAPSTAN	1.3 ton at 9 m/min
TOWING HOOK FORE	Mampaey disc type, SWL 150 kN/ 15 ton
TOWING HOOK AFT	Mampaey disc type, SWL 250 kN/ 25 ton
EMBARKATION PLATFORMS	Removable platforms + railing on PS+SB shoulders
PUSH BOW	Cylindrical rubber fender 380 mm
LIFERAFT	On top deck
FENDERING	Continuous rubber D-fender around hull 200x200mm

### ACCOMMODATION

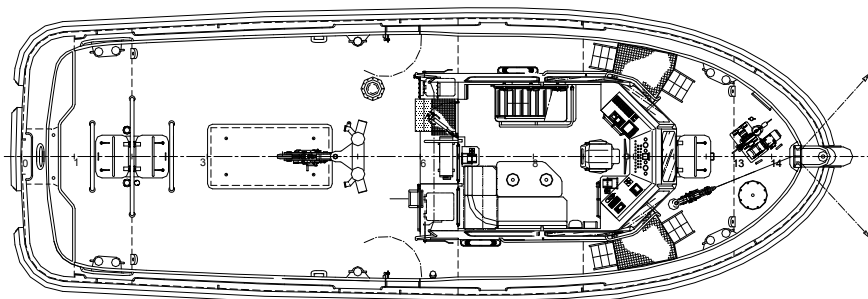
The accommodation is completely insulated and finished with durable modern livings, acoustical ceiling in the wheelhouse and a floating floor. The air-conditioned wheelhouse is fitted with an L-shaped settee with table. Below deck a crew cabin for 2 persons, galley, sanitary facilities and an engine room store are provided. Windows are fitted in aluminium frames.

### NAUTICAL AND COMMUNICATION EQUIPMENT

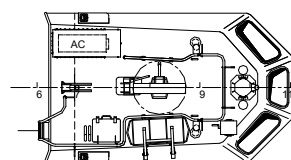
SEARCHLIGHT	Pesch 24 V 250 W
HORN	Ongaro
RADAR	Furuno FR 8062
COMPASS	Magnetic Kotter type
GPS	Furuno GP-32
ECHOSOUNDER	Furuno LS-6100
VHF RADIO TELEPHONE	Sailor Compact 6248 25 W



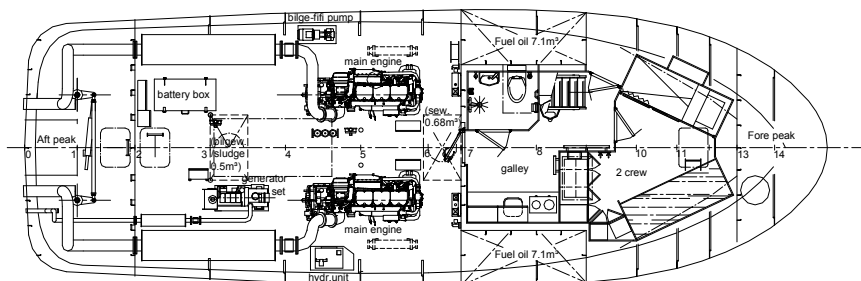
**Below Maindeck**



**Topdeck**



**Maindeck**



# DAMEN STAN TUG<sup>®</sup> 1606

"SVITZER TYLOS"

# DAMEN

DAMEN SHIPYARDS GORINCHEM

Member of the DAMEN SHIPYARDS GROUP



Industrieterrein Avelingen West 20  
4202 MS Gorinchem

P.O. Box 1  
4200 AA Gorinchem  
The Netherlands

phone +31 (0)183 63 99 11  
fax +31 (0)183 63 21 89

info@damen.nl  
www.damen.nl