



STAN TUG 1606

"MURJAN 22"

GENERAL

Yard number	503194
Delivery date	September 2018
Basic functions	Towing, mooring, pushing and survey operations
Classification	Bureau Veritas I ✱ HULL • MACH Tug Coastal Area Incl. tonnage certificate
Painting	Epoxy paint system
Flag	Kingdom of Saudi Arabia
Owner	Murjan Al-Sharq Marine Contracting Co. Ltd.

DIMENSIONS

Length overall	16.76 m
Beam overall	5.94 m
Depth at sides	2.54 m
Draught aft	2.21 m
Displacement	87.0 t
Scantlings	Hull 10 mm, sheerstrake 20 mm

TANK CAPACITIES

Fuel oil	14.5 m ³
Fresh water	1.1 m ³
Sewage	0.7 m ³
Bilge water/ sludge	0.5 m ³

PERFORMANCES

Bollard pull ahead	16.5 t
Speed	11.4 kn

PROPULSION SYSTEM

Main engines	2x Caterpillar C18 TA/A
Total power	894 bkW (1216 bhp) at 1800 rpm
Gearboxes	2x Reintjes WAF 264L 4.5:1
Propellers	2x Kaplan II fixed pitch propellers
Nozzles	2x 1350 mm Van de Giessen "Optima" with stainless steel innerrings
Rudders	2x Streamlined double plates
Steering gear	Powered hydraulic 2x 45°, with rudder indicator

AUXILIARY EQUIPMENT

Generator set	Caterpillar C2.2 NA, 230/400 V, 20.3 kVA, 50 Hz
Alternator 24 V	2x main engine driven
Battery sets	2x 24 V 200 Ah (with changeover), 1x 24 V 80 Ah
Alarm system	Engines, gearboxes, bilge alarm and fire detection engine room
Bilge/ general service pump	Electrically driven, Sterling SIHI VWSI 5013, 15 m ³ /h
Fuel oil system	Duplex filters, water separator and SOS valve
Cooling system	Closed cooling system
Water system	Electrically driven fresh water hydrophore 24 V
Fresh water heater	230 V, 30 liter
Sewage system	Sani-Loo, MF Series, 900 l/h
Ventilation	Mechanical ventilation in engine room, 10.500 m ³ /h
Fixed internal FiFi	Novec

DECK LAY-OUT

Anchors	2x 80 kg Pool (High Holding Power)
Chain	100 m shortlink, 12.5 mm diameter
Anchor winch	Electrical for one anchor
Towing hook	Mampaey disc type, SWL 250 kN/ 25 ton
Life raft	On top deck
Push bow	Cylindrical rubber fender 380 mm diameter
Fendering	Continuous rubber D-fender around hull 200 x 200 mm

ACCOMMODATION

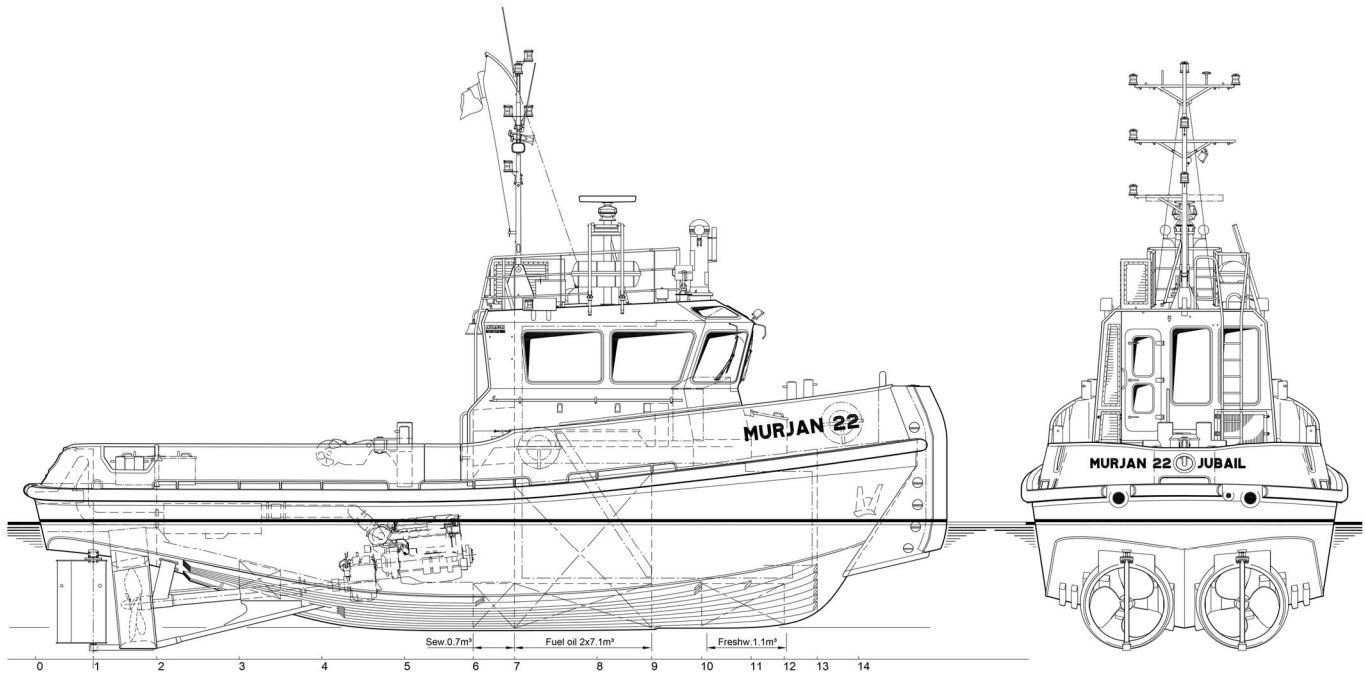
The accommodation is completely insulated and finished with durable modern linings, acoustical ceiling in the wheelhouse and a floating floor. The air-conditioned wheelhouse is fitted with a corner settee with table and a control position. Below deck a galley, sanitary facilities and a store are provided. Windows are fitted in aluminium frames.

NAUTICAL AND COMMUNICATION EQUIPMENT

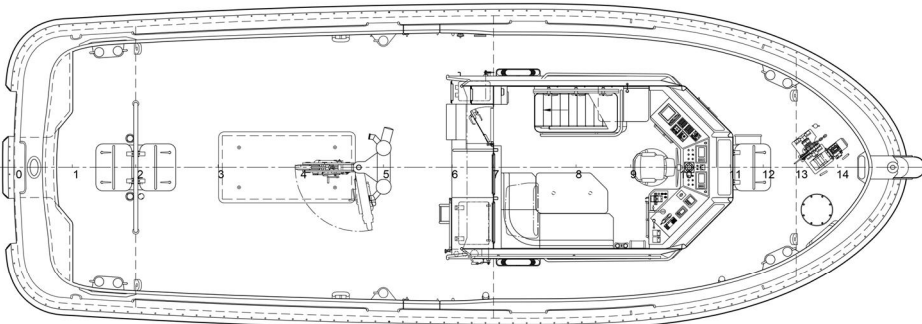
Searchlight	Pesch 250 W
Horn	Electric, Ebuki E90
Radar	Furuno FR-8062
Compass	Magnetic Kotter type
Gyro compass	Anschuetz Standard 22 compact
GPS	Furuno GP-32
Echosounder	Furuno LS-6100
VHF	Sailor Compact 6248

STAN TUG 1606

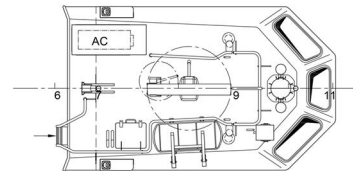
"MURJAN 22"



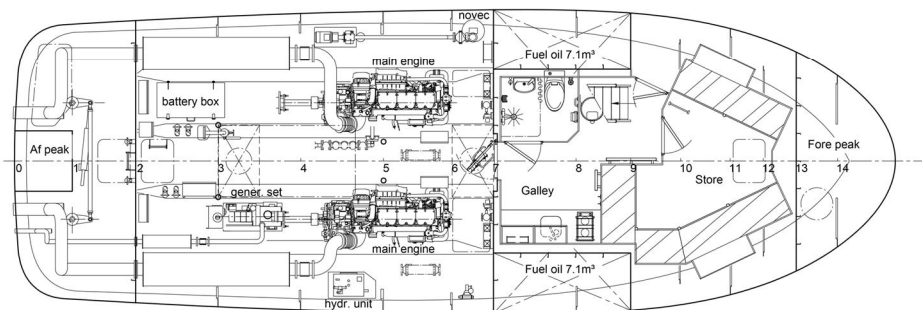
Main deck



Top deck



Below Main deck



DAMEN

DAMEN SHIPYARDS GROUP

Avelingen-West 20
4202 MS Gorinchem
The Netherlands

P.O. Box 1
4200 AA Gorinchem
The Netherlands

phone +31 (0)183 63 99 22
fax +31 (0)183 63 21 89

info@damen.com
www.damen.com

© No part of the leaflet may be reproduced in any form, by print, photo print, microfilm, or any other means, without written permission from Damen Shipyards Group