



TANKER 2900 SHALLOW DRAFT

STANDARD

PICTURE OF SIMILAR VESSEL

GENERAL

Basic functions	Transport of oil/refined products
Classification	Lloyd's Register of Shipping * 100 A1, Double Hull Oil Tanker specified Coastal Service * LMC, UMS, with descriptive note: flashpoint > 60°C Maximum specific cargo weight 1.025 ton/m ³ Setting of the P/V valves +14kPA / -3.5 kPA

DIMENSIONS

Length overall	86.30 m
Length p.p.	82.10 m
Beam moulded	16.70 m
Depth moulded	6.00 m
Draft (design)	3.20 m
Deadweight (river draft)	2,250 t
Deadweight (design draft)	2,720 t

TANK CAPACITIES

Ballast water	2,350 m ³
Fuel oil	200 m ³
Potable water	45 m ³
Sewage	10 m ³
Lubrication oil	9 m ³
Dirty oil/sludge	4 m ³

TANK CAPACITIES, CARGO

Segregation 1 (100%)	900 m ³
Segregation 2 (100%)	1,100 m ³
Segregation 3 (100%)	900 m ³
Total cargo tank capacity	2.900 m ³

Slop tank (100%)	150 m ³
------------------	--------------------

TANK SYSTEM, CARGO

Cargo (gear) pump(s)	3x 150 m ³ /hr
Slop pump(s)	1x 30 m ³ /hr

PERFORMANCES

Speed, at design draft	
100% MCR, approx.	10 kn

PROPULSION SYSTEM

Main engine(s)	2x Diesel, 1,000 kW
Propeller(s)	2x Azimuth Thrusters, 1,900 mm in nozzle
Bow thruster	Electrical, fixed pitch, 150 kW

ELECTRICAL EQUIPMENT

Generator set(s)	2x Diesel, 380 kVA – 50 Hz 1x Diesel emergency, 64 kVA – 50 Hz
Shore supply	1x 230/400V, 125A, 50 m cable

DECK LAY-OUT

Winch(es)	2x Electric-hydraulic anchor/mooring, with drum and 1x warping head
Crane(s)	1x Electric-hydraulic, hose handling SWL 1.5 ton at 12m
Lifesaving	2x Life rafts 1x Freefall life boat 1x Rescue boat

SECONDARY SHIP SYSTEMS

Compressor(s)	2x Starting air 1x Working air
Filter Separator(s)	1x Fuel oil 1x Bilge water acc. Marpol
Pump(s)	1x Ballast water treatment unit 2x Ballast 200m ³ /hr 1x Emergency firefighting
Firefighting system	2x Fuel oil transfer CO ₂ for engine room Foam cargo deck

ACCOMMODATION

Crew	12 persons, with heating, ventilation and air-conditioning
------	--

NAUTICAL AND COMMUNICATION EQUIPMENT

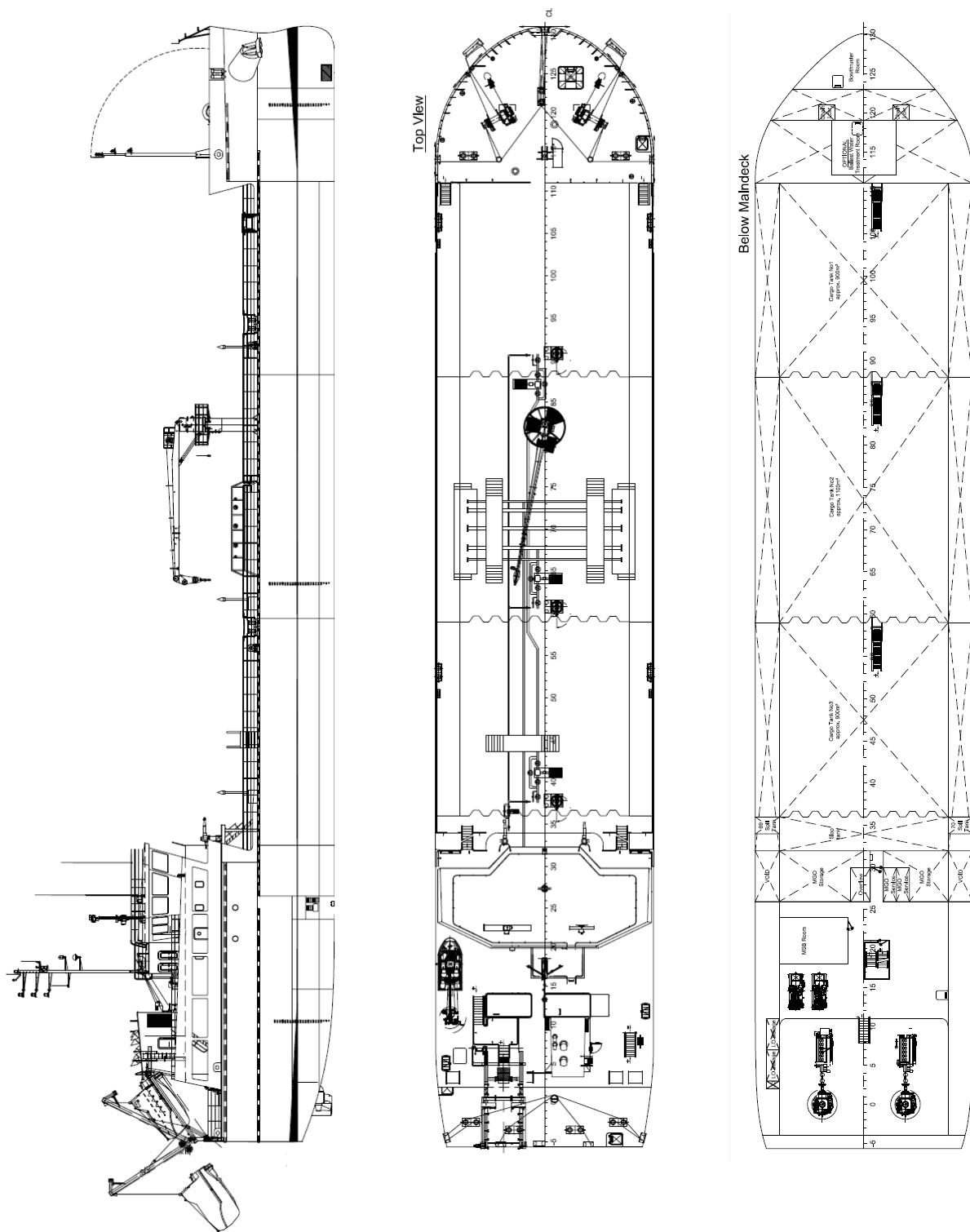
Radio telephone set	According to GMDSS for area A2
---------------------	--------------------------------

SPECIAL EQUIPMENT - OPTIONS

Tank Wash	
Oil Discharge Monitoring	

Gas freeing system	
Cargo ank monitoring	
Cargo tank heating	

TANKER 2900 SHALLOW DRAFT STANDARD



DAMEN SHIPYARDS GROUP

Avelingen-West 20
4202 MS Gorinchem
The Netherlands

P.O. Box 1
4200 AA Gorinchem
The Netherlands

phone +31 (0)183 63 99 22
fax +31 (0)183 63 21 89

info@damen.com
www.damen.com

© No part of the leaflet may be reproduced in any form, by print, photo print, microfilm, or any other means, without written permission from Damen Shipyards Group