



# TANKER 800

## STANDARD

### PICTURE OF SIMILAR VESSEL

#### GENERAL

Basic functions	Transportation of oil/refined products
Classification	Bureau Veritas I ✳ Hull, ✳ MACH, Oil Tanker-ESP Flashpoint >60°C, Coastal Navigation
	Max. specific weight cargo 1,025 ton/m <sup>3</sup>

#### DIMENSIONS

Length overall	49.92 m
Length b.p.p.	47.70 m
Beam moulded	9.50 m
Depth moulded	3.80 m
Draft	2.60 m
Deadweight	700 t
Gross tonnage	497 t

#### TANK CAPACITIES

Ballast water	461 m <sup>3</sup>
Fuel oil (MGO)	48 m <sup>3</sup>
Potable water	8 m <sup>3</sup>
Sewage	6.5 m <sup>3</sup>
Bilge water	2 m <sup>3</sup>

#### TANK CAPACITIES, CARGO

Segregation 1, 4 tanks (100%)	425 m <sup>3</sup>
Segregation 1, 4 tanks (100%)	371 m <sup>3</sup>
Total cargo tank capacity	796 m <sup>3</sup>

Slop tank, 1 tank (100%)	8.9 m <sup>3</sup>
--------------------------	--------------------

#### TANK SYSTEM, CARGO

Cargo pump(s)	2x 100 m <sup>3</sup> /h
Slop pump(s)	Via cargo pumps
Stripping pump(s)	Via cargo pumps
Ventilation	Open ventilation

#### PERFORMANCES

Speed, at d= 2.60 m 100% MCR, approx.	8.5 kn
---------------------------------------	--------

#### PROPULSION SYSTEM

Main engines	2x Diesel (MGO), 331 kW at 1,800 rpm
Gearbox	Reverse reduction type
Stern tube	Oil lubricated
Propeller	Fixed pitch, 1,600 mm
Steering gear	Electric-hydraulic
Rudder	Spade type

#### ELECTRICAL EQUIPMENT

Generator set(s)	1x Diesel, approx. 44 kW
Shore supply	1x 440 V, 63A, 25 m cable

#### DECK LAY-OUT

Winch(es)	1x Hydraulic anchor, with 2x warping heads
Crane(s)	1x manual operated, hose handling crane
Lifesaving	2x Liferafts 1x Rescue boat

#### SECONDARY SHIP SYSTEMS

Compressor(s)	1x Working air
Pump(s)	2x General Service 1x Emergency firefighting 1x Fuel oil transfer
Firefighting system	CO <sub>2</sub> for engine room

#### ACCOMMODATION

Crew	3 persons, with heating, ventilation and air-conditioning
------	---

#### NAUTICAL AND COMMUNICATION EQUIPMENT

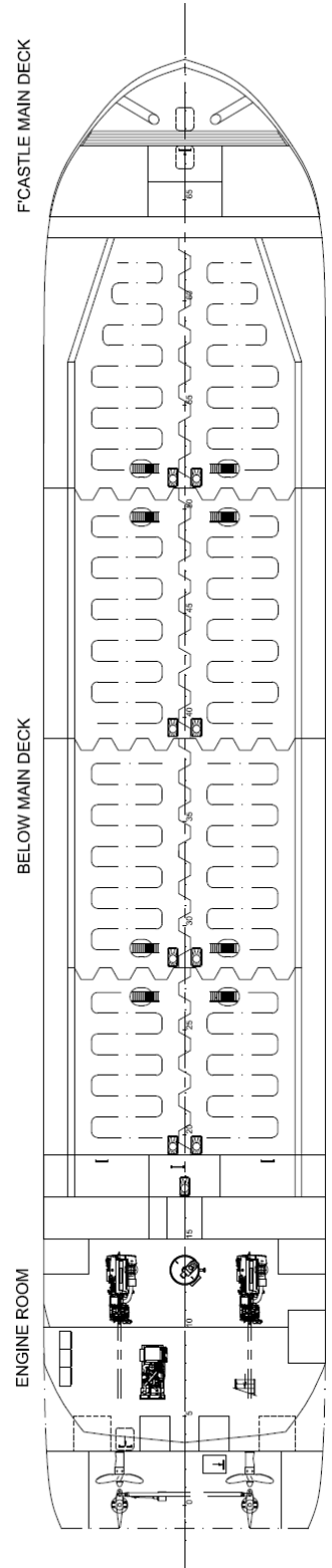
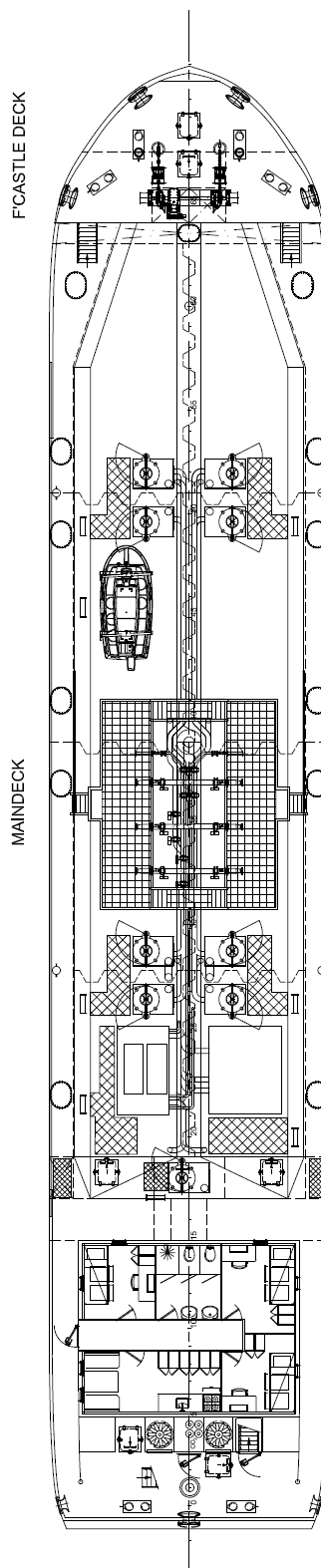
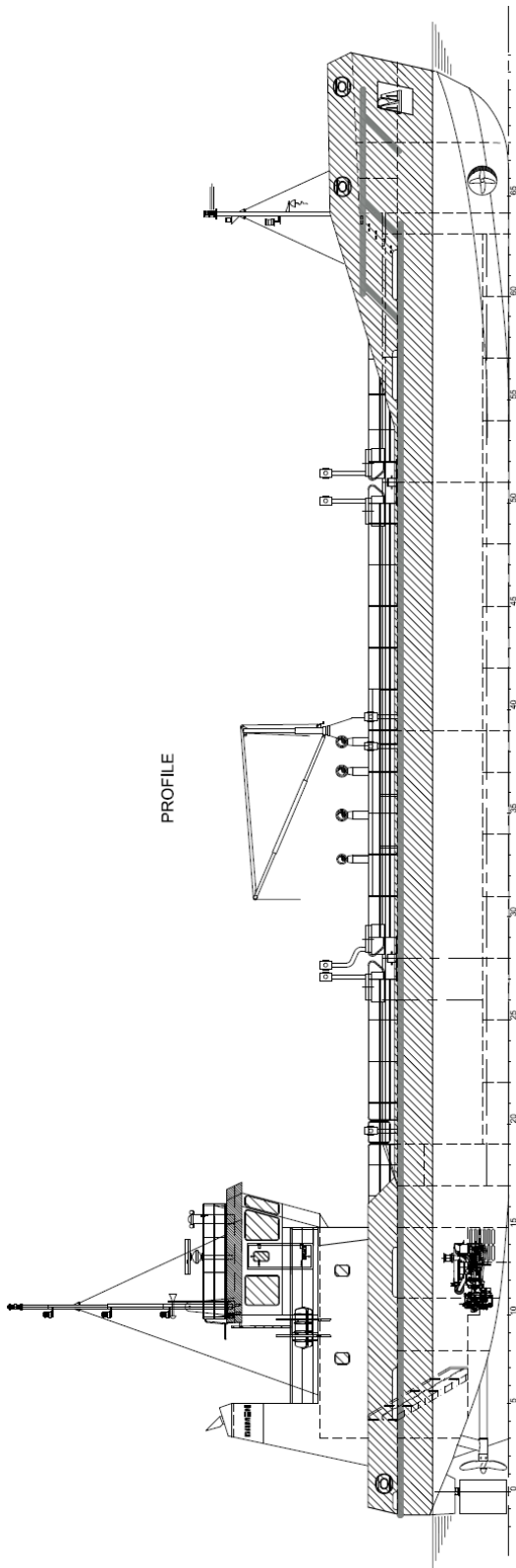
Radio telephone set	According to GMDSS for area A1
---------------------	--------------------------------

#### SPECIAL EQUIPMENT - OPTIONS

IMO II / IMO III	
Cargo tank heating + coils	
Tank monitoring	
Bow thruster	
Capstan aft	

# TANKER 800

## STANDARD



DAMEN SHIPYARDS GROUP

Avelingen-West 20  
4202 MS Gorinchem  
The Netherlands

P.O. Box 1  
4200 AA Gorinchem  
The Netherlands

phone +31 (0)183 63 99 22  
fax +31 (0)183 63 21 89

info@damen.com  
[www.damen.com](http://www.damen.com)

© No part of the leaflet may be reproduced in any form, by print, photo print, microfilm, or any other means, without written permission from Damen Shipyards Group