



TANKER 23000

STANDARD

PICTURE OF SIMILAR VESSEL

GENERAL

Basic functions	Transportation of oil/refined products
Classification	Lloyd's Register of Shipping ✳ 100 A1, Double Hull Oil Tanker, ESP ✳ LMC, UMS Max. specific weight cargo 1,025 ton/m ³ Setting of the PV-valves: 14 kPA/-3.5 kPA

DIMENSIONS

Length overall	156.90 m
Length b.p.p.	150.00 m
Beam moulded	24.60 m
Depth moulded	12.00 m
Draft	8.40 m
Deadweight	20,000 t
Gross tonnage	13,100 t

TANK CAPACITIES

Ballast water	9,100 m ³
Fuel oil (HFO)	700 m ³
Fuel oil (MGO)	126 m ³
Potable water	100 m ³
Sewage	15 m ³
Lubrication oil	15 m ³

TANK CAPACITIES, CARGO

Segregation 1, 2 tanks (100%)	2,300 m ³
Segregation 2, 2 tanks (100%)	4,100 m ³
Segregation 3, 2 tanks (100%)	4,300 m ³
Segregation 4, 2 tanks (100%)	4,300 m ³
Segregation 5, 2 tanks (100%)	4,300 m ³
Segregation 6, 2 tanks (100%)	4,300 m ³
Total cargo tank capacity	23,600 m ³

Slop tank (100%)	550 m ³
------------------	--------------------

TANK SYSTEM, CARGO

Cargo pump(s)	10x 200 m ³
Slop pump(s)	1x 50 m ³
Stripping pump(s)	Via ejectors
Ventilation	Closed ventilation
Tank cleaning	Butter wash hatches
Tank heating	Oil heater and coils
Tank monitoring	Temperature, level + alarms

PERFORMANCES

Speed, at d= 8.40 m	13.5 kn
100% MCR, approx.	

PROPULSION SYSTEM

Main engine	Diesel (HFO), 6,300 kW at 500 rpm
Gearbox	Reduction type
Stern tube	Oil lubricated
Propeller	Controllable pitch, 4,800 mm
Steering gear	Electric-hydraulic
Rudder	Spade type

ELECTRICAL EQUIPMENT

Generator set(s)	2x Diesel, approx. 750 kW 1x Shaft, approx. 750 kW 1x Diesel, emergency, approx. 150 kW
Shore supply	1x 400 V, 500A

DECK LAY-OUT

Winch(es)	2x Electric-hydraulic anchor/mooring, with 2x rope drums and 1x warping head
Winch(es) aft deck	2x Electric-hydraulic mooring, with 2x rope drums and 1x warping head
Winch(es) cargo area	2x Electric-hydraulic mooring, with 2x rope drums and 1x warping head
Crane(s)	1x Electric-hydraulic, hose handling type
Lifesaving	3x Liferafts 1x Rescue boat 1x Freefall life boat

SECONDARY SHIP SYSTEMS

Compressor(s)	2x Starting air
Separator(s)	2x Fuel oil 1x Lubrication oil 1x Bilge water acc. Marpol
Pump(s)	1x Ballast Water Treatment Unit 2x General Service 1x Emergency firefighting 1x Fuel oil transfer
Firefighting system	CO ₂ for engine room

ACCOMMODATION

Crew	15 persons, with heating, ventilation and air-conditioning
------	--

NAUTICAL AND COMMUNICATION EQUIPMENT

Radio telephone set	According to GMDSS for area A3
---------------------	--------------------------------

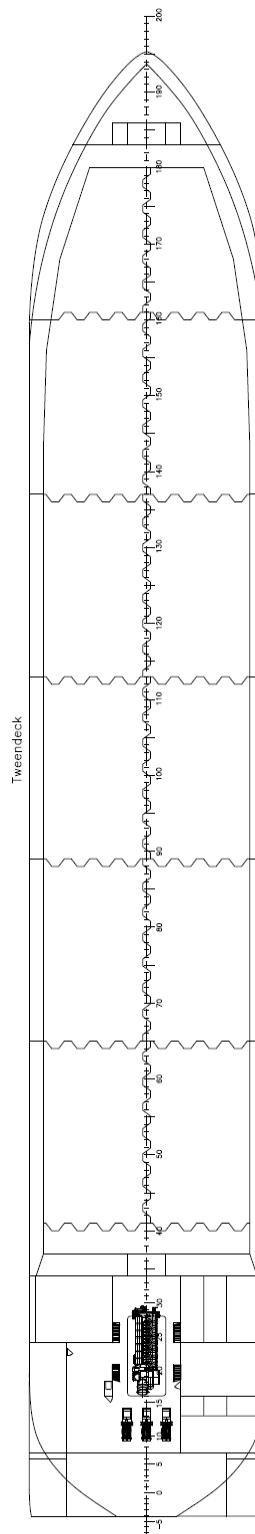
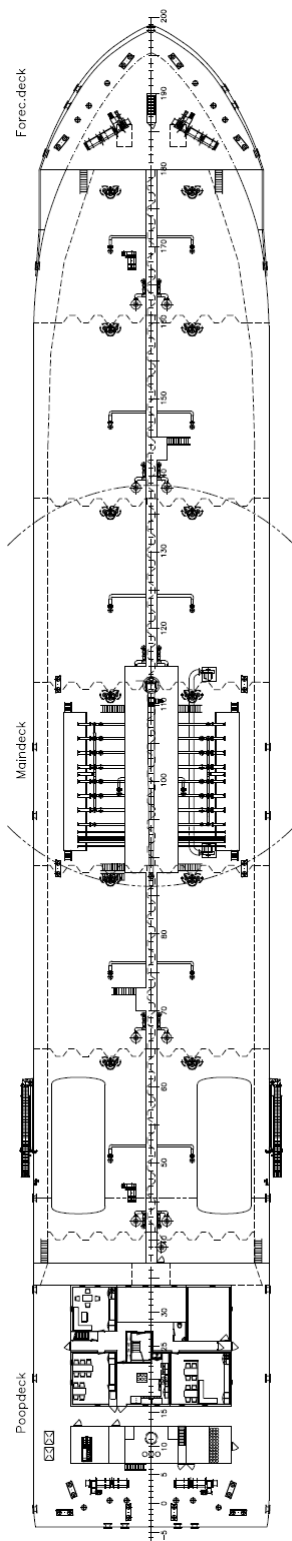
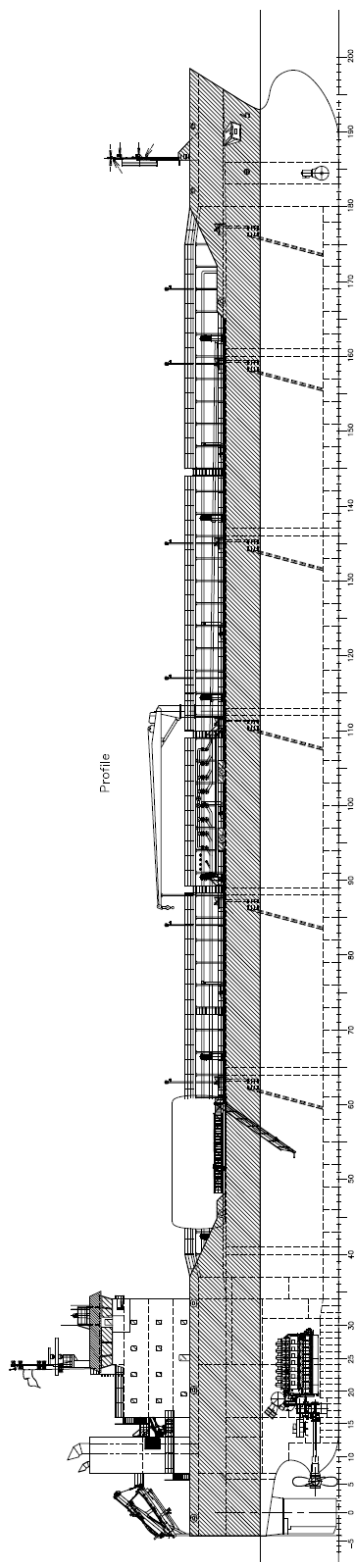
SPECIAL EQUIPMENT - OPTIONS

IMO II / IMO III	
Cargo tank cleaning system	
Oil discharge monitoring system	
Fixed or portable gas freeing fans	
Pipeline purging installation	
Bow thruster	

DAMEN

TANKER 23000

STANDARD



DAMEN SHIPYARDS GROUP

Avelingen-West 20
4202 MS Gorinchem
The Netherlands

P.O. Box 1
4200 AA Gorinchem
The Netherlands

phone +31 (0)183 63 99 22
fax +31 (0)183 63 21 89

info@damen.com
www.damen.com

© No part of the leaflet may be reproduced in any form, by print, photo print, microfilm, or any other means, without written permission from Damen Shipyards Group