



# TANKER 8000

## STANDARD

### PICTURE OF SIMILAR VESSEL

#### GENERAL

Basic functions	Transportation of oil/refined products
Classification	Lloyd's Register of Shipping ✕ 100 A1, Double Hull Oil Tanker, ESP ✕ LMC, UMS Max. specific weight cargo 1,025 ton/m <sup>3</sup> Setting of the PV-valves: 14 kPA/-3.5 kPA

#### DIMENSIONS

Length overall	104.52 m
Length b.p.p.	99.92 m
Beam moulded	17.00 m
Depth moulded	9.50 m
Draft	6.30 m
Deadweight	7,050 t
Gross tonnage	4,335 t

#### TANK CAPACITIES

Ballast water	3,265 m <sup>3</sup>
Fuel oil (HFO)	258 m <sup>3</sup>
Fuel oil (MGO)	43 m <sup>3</sup>
Potable water	15 m <sup>3</sup>
Sewage	13 m <sup>3</sup>
Lubrication oil	21 m <sup>3</sup>

#### TANK CAPACITIES, CARGO

Segregation 1, 5 tanks (100%)	3,843 m <sup>3</sup>
Segregation 2, 5 tanks (100%)	3,887 m <sup>3</sup>
Total cargo tank capacity	7,730 m <sup>3</sup>

Slop tank (100%)	160 m <sup>3</sup>
------------------	--------------------

#### TANK SYSTEM, CARGO

Cargo pump(s)	2x 400 m <sup>3</sup>
Slop pump(s)	1x 20 m <sup>3</sup>
Stripping pump(s)	Via ejectors
Ventilation	Closed ventilation
Tank cleaning	Butter wash hatches
Tank heating	Oil heater and coils
Tank monitoring	Temperature, level + alarms

#### PERFORMANCES

Speed, at d= 6.30 m	12.3 kn
100% MCR, approx.	

#### PROPULSION SYSTEM

Main engine	Diesel (HFO), 2,640 kW at 750 rpm
Gearbox	Reduction type
Stern tube	Oil lubricated
Propeller	Controllable pitch, 3,850 mm
Steering gear	Electric-hydraulic
Rudder	Spade type
Bow thruster	Electric, fixed pitch, 300 kW

#### ELECTRICAL EQUIPMENT

Generator set(s)	2x Diesel, approx. 320 kW 1x Shaft, approx. 348 kW 1x Diesel, emergency, approx. 64 kW
Shore supply	1x 440 V, 63A, 50 m cable

#### DECK LAY-OUT

Winch(es)	2x Electric-hydraulic anchor/mooring, with 1x rope drum and 1x warping head 3x Electric-hydraulic mooring, with 2x rope drums and 1x warping head
Crane(s)	1x Electric-hydraulic, hose handling type
Lifesaving	2x Liferafts 1x Rescue boat 1x Freefall life boat

#### SECONDARY SHIP SYSTEMS

Compressor(s)	2x Starting air
Separator(s)	2x Fuel oil 1x Lubrication oil 1x Bilge water acc. Marpol
Pump(s)	1x Ballast Water Treatment Unit 2x General Service 1x Emergency firefighting 2x Fuel oil transfer
Firefighting system	CO <sub>2</sub> for engine room

#### ACCOMMODATION

Crew	10 persons, with heating, ventilation and air-conditioning
------	--

#### NAUTICAL AND COMMUNICATION EQUIPMENT

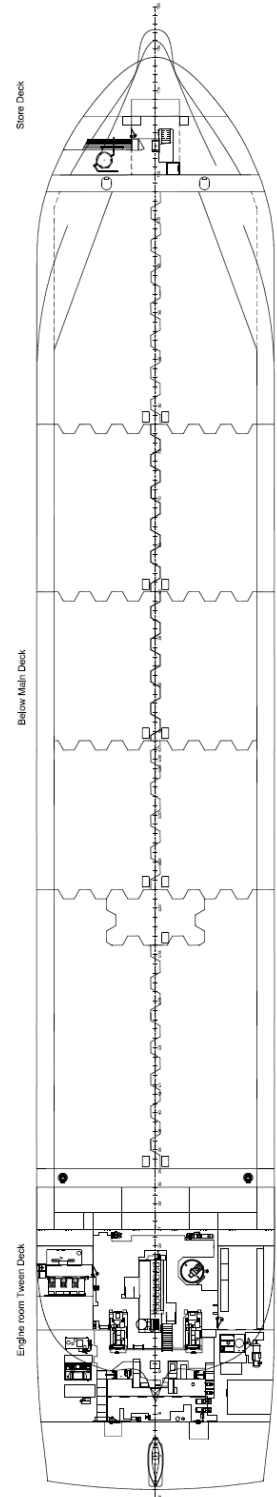
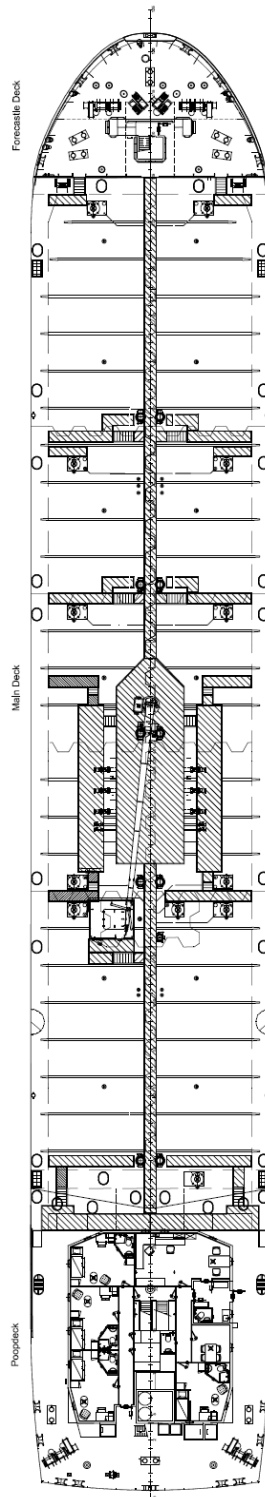
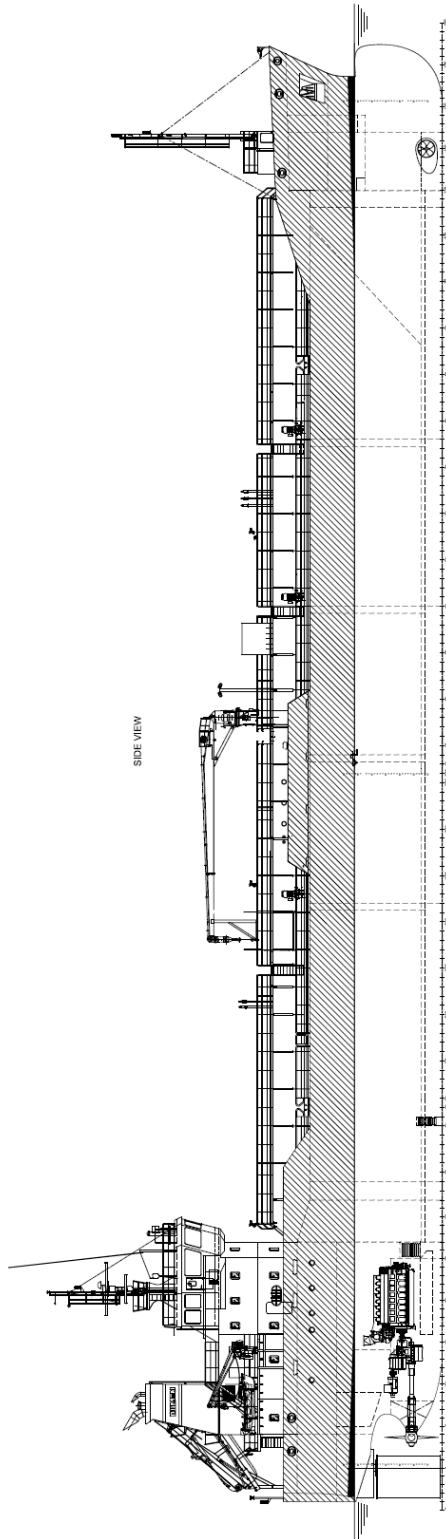
Radio telephone set	According to GMDSS for area A3
---------------------	--------------------------------

#### SPECIAL EQUIPMENT - OPTIONS

IMO II / IMO III	
Blending installation	
Cargo tank cleaning system	
Oil discharge monitoring system	
Propulsion system including PTO/PTI	
Fixed or portable gas freeing fans	
Pipeline purging installation	

# DAMEN

# TANKER 8000 STANDARD



# DAMEN

DAMEN SHIPYARDS GROUP

Avelingen-West 20  
4202 MS Gorinchem  
The Netherlands

P.O. Box 1  
4200 AA Gorinchem  
The Netherlands

phone +31 (0)183 63 99 22  
fax +31 (0)183 63 21 89

info@damen.com  
[www.damen.com](http://www.damen.com)

© No part of the leaflet may be reproduced in any form, by print, photo print, microfilm, or any other means, without written permission from Damen Shipyards Group