



TANKER 5700

CLEAN PARCELING PRODUCTS

PICTURE OF SIMILAR VESSEL

GENERAL

| | |
|-----------------|---|
| Basic functions | Transportation of CPP (Clean Parceling Products) flashpoint < 60°C |
| Classification | Lloyd's Register of Shipping ✳ 100 A1, Double Hull Oil Tanker, ESP ✳ LMC, UMS |
| | Max. specific weight cargo 1,025 ton/m ³ |
| | Setting PV-valves: 14 kPA/-3.5 kPA |

EEDI

| |
|-------------------|
| Phase : 3 (2025+) |
| Required : 17.87 |
| Attained : 16.37 |

DIMENSIONS

| | |
|----------------|---------|
| Length overall | 85.32 m |
| Length b.p.p. | 81.12 m |
| Beam moulded | 17.00 m |
| Depth moulded | 8.95 m |
| Draft | 6.30 m |
| Deadweight | 5,420 t |
| Gross tonnage | 3,575 t |

TANK CAPACITIES

| | |
|-----------------|----------------------|
| Ballast water | 2,450 m ³ |
| Fuel oil (MGO) | 250 m ³ |
| Potable water | 15 m ³ |
| Sewage | 15 m ³ |
| Lubrication oil | 15 m ³ |

TANK CAPACITIES, CARGO

| | |
|-------------------------------|----------------------|
| Segregation 1, 2 tanks (100%) | 750 m ³ |
| Segregation 2, 2 tanks (100%) | 1,050 m ³ |
| Segregation 3, 2 tanks (100%) | 1,350 m ³ |
| Segregation 4, 2 tanks (100%) | 1,200 m ³ |
| Segregation 5, 2 tanks (100%) | 1,380 m ³ |
| Total cargo tank capacity | 5,730 m ³ |

| | |
|------------------|-------------------|
| Slop tank (100%) | 90 m ³ |
|------------------|-------------------|

TANK SYSTEM, CARGO

| | |
|-------------------------|-----------------------------|
| Cargo pump(s), submerge | 10x 200 m ³ |
| Slop pump(s), submerge | 1x 56 m ³ |
| Stripping pump(s) | Via ejectors |
| Ventilation | Closed ventilation |
| Tank cleaning | Butter wash hatches |
| Tank heating | Oil heater and coils |
| Tank monitoring | Temperature, level + alarms |

PERFORMANCES

| | |
|---------------------|---------|
| Speed, at d= 6.30 m | 11.6 kn |
| 100% MCR, approx. | |

PROPULSION SYSTEM

| | |
|---------------|-----------------------------------|
| Main engine | Diesel (MGO), 2,100 kW at 750 rpm |
| Gearbox | Reduction type |
| Stern tube | Oil lubricated |
| Propeller | Controllable pitch, 3,850 mm |
| Steering gear | Electric-hydraulic |
| Rudder | Spade type |
| Bow thruster | Electric, fixed pitch, 300 kW |

ELECTRICAL EQUIPMENT

| | |
|------------------|-------------------------------------|
| Generator set(s) | 2x Diesel, approx. 400 kW |
| | 1x Shaft, approx. 350 kW |
| | 1x Diesel, emergency, approx. 64 kW |
| Shore supply | 1x 400 V, 63A, 50 m cable |

DECK LAY-OUT

| | |
|------------|---|
| Winch(es) | 2x Electric-hydraulic anchor/mooring, with 1x rope drum and 1x warping head |
| | 2x Electric-hydraulic mooring, with 1x rope drum and 1x warping head |
| Crane(s) | 1x Electric-hydraulic, hose handling type |
| Lifesaving | 2x Liferafts |
| | 1x Rescue boat |
| | 1x Freefall life boat |

SECONDARY SHIP SYSTEMS

| | |
|---------------------|---------------------------------|
| Compressor(s) | 2x Starting air |
| Separator(s) | 2x Fuel oil |
| | 1x Lubrication oil |
| | 1x Bilge water acc. Marpol |
| Pump(s) | 1x Ballast Water Treatment Unit |
| | 2x General Service |
| | 1x Emergency firefighting |
| | 1x Fuel oil transfer |
| Firefighting system | CO ₂ for engine room |

ACCOMMODATION

| | |
|------|---|
| Crew | 9 persons and 1 guest, with heating, ventilation and air-conditioning |
|------|---|

NAUTICAL AND COMMUNICATION EQUIPMENT

| | |
|---------------------|--------------------------------|
| Radio telephone set | According to GMDSS for area A3 |
|---------------------|--------------------------------|

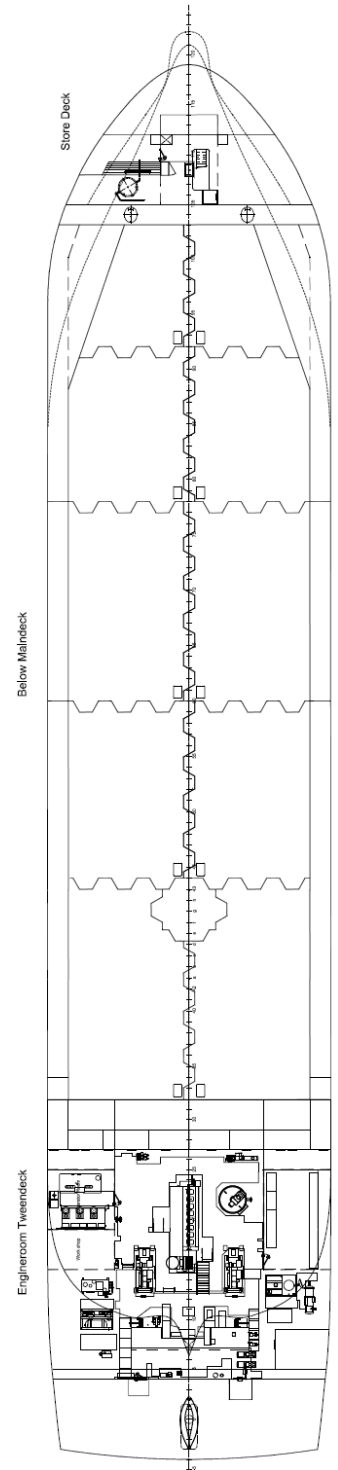
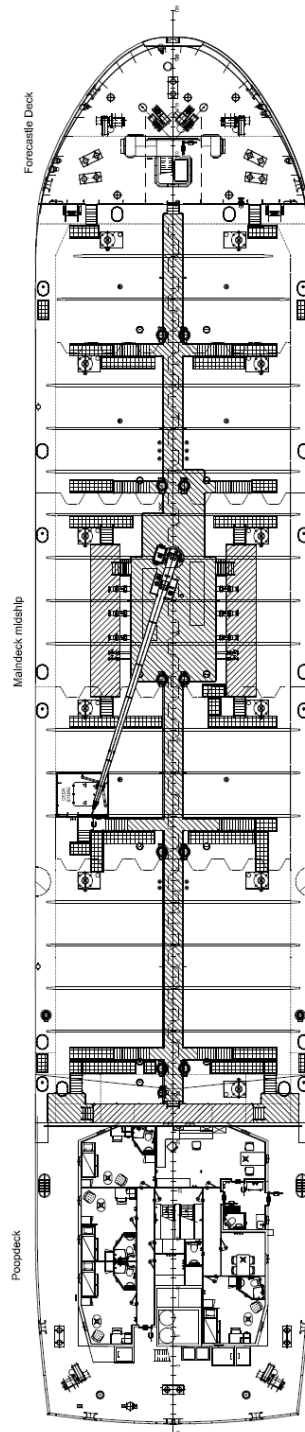
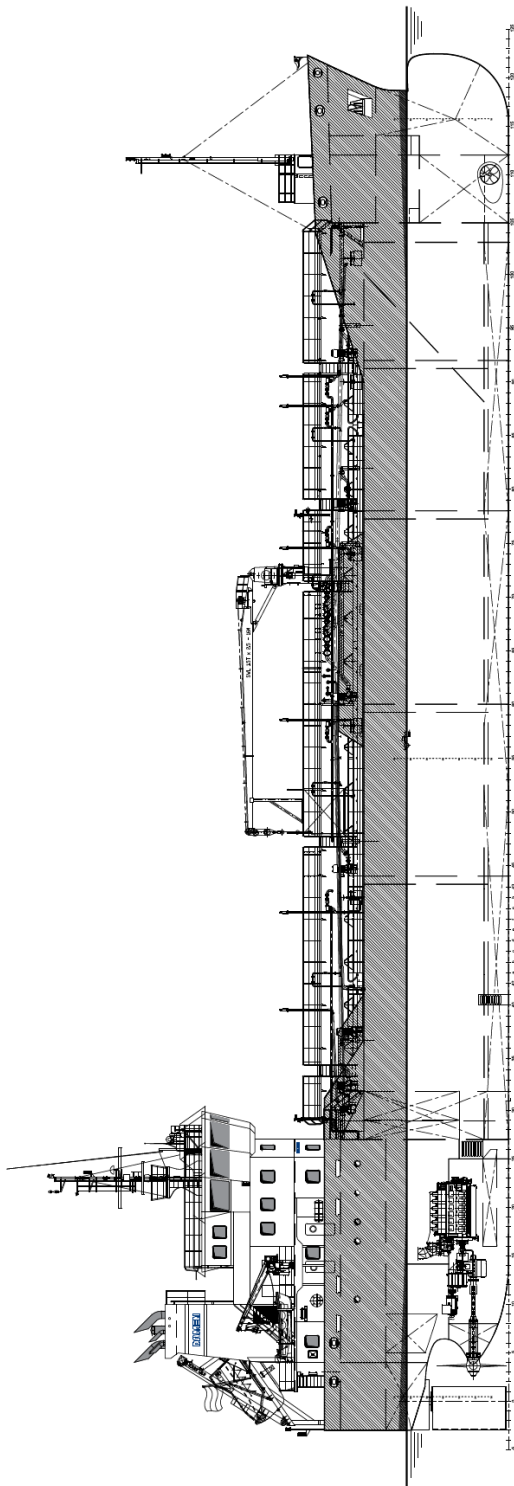
SPECIAL EQUIPMENT - OPTIONS

Bunker products with flashpoint > 60°C, with pump room
 IMO II / IMO III IBC
 Blending installation
 Cargo tank cleaning system
 Oil discharge monitoring system
 Propulsion system including PTO/PTI
 Fixed or portable gas freeing fans
 Pipeline purging installation

DAMEN

TANKER 5700

CLEAN PARCELING PRODUCTS



DAMEN

DAMEN SHIPYARDS GROUP

Avelingen-West 20
4202 MS Gorinchem
The Netherlands

P.O. Box 1
4200 AA Gorinchem
The Netherlands

phone +31 (0)183 63 99 22
fax +31 (0)183 63 21 89

info@damen.com
www.damen.com

© No part of the leaflet may be reproduced in any form, by print, photo print, microfilm, or any other means, without written permission from Damen Shipyards Group