



TANKER 4150

STANDARD

PICTURE OF SIMILAR VESSEL

GENERAL

Basic functions	Transportation of oil/refined products
Classification	Lloyd's Register of Shipping ✳ 100 A1, Double Hull Oil Tanker, ESP ✳ LMC, UMS
	Max. specific weight cargo 1,025 ton/m ³

DIMENSIONS

Length overall	86.00 m
Length b.p.p.	82.19 m
Beam moulded	14.00 m
Depth moulded	8.50 m
Draft	5.50 m
Deadweight	3,750 t
Gross tonnage	2,635 t

TANK CAPACITIES

Ballast water	2,070 m ³
Fuel oil (HFO)	150 m ³
Fuel oil (MGO)	30 m ³
Potable water	15 m ³
Sewage	15 m ³
Lubrication oil	25 m ³

TANK CAPACITIES, CARGO

Segregation 1, 6 tanks (100%)	3,150 m ³
Segregation 2, 2 tanks (100%)	1,000 m ³
Total cargo tank capacity	4,150 m ³

Slop tank (100%)	85 m ³
------------------	-------------------

TANK SYSTEM, CARGO

Cargo pump(s), deck	2x 300 m ³
Slop pump(s), deck	1x 20 m ³
Stripping pump(s)	Via slop pump
Ventilation	Open ventilation
Tank cleaning	Butter wash hatches

PERFORMANCES

Speed, at d= 5.50 m 100% MCR, approx.	10.5 kn
---------------------------------------	---------

PROPULSION SYSTEM

Main engine	Diesel (MGO), 1,520 kW at 1,000 rpm
Gearbox	Reduction type
Stern tube	Oil lubricated
Propeller	Controllable pitch, 2,600 mm
Steering gear	Electric-hydraulic
Rudder	Fish tail type
Bow thruster	Electric, fixed pitch, 200 kW

ELECTRICAL EQUIPMENT

Generator set(s)	2x Diesel, approx. 450 kW 1x Diesel, emergency, approx. 80 kW
Shore supply	1x 230/400 V, 240A, 50 m cable

DECK LAY-OUT

Winch(es)	2x Electric-hydraulic anchor/mooring, with 1x declutchable drum and 1x warping head 2x Electric-hydraulic mooring, with 1x declutchable drum and 1x warping head
Crane(s)	1x Electric-hydraulic, hose handling type
Lifesaving	2x Liferafts 1x Rescue boat 1x Freefall life boat

SECONDARY SHIP SYSTEMS

Compressor(s)	2x Starting air
Separator(s)	3x Fuel oil 1x Bilge water acc. Marpol
Pump(s)	1x Ballast Water Treatment Unit 2x General Service 1x Emergency firefighting 1x Fuel oil transfer
Firefighting system	CO ₂ for engine room

ACCOMMODATION

Crew	8 persons and 1 guest, with heating, ventilation and air-conditioning
------	---

NAUTICAL AND COMMUNICATION EQUIPMENT

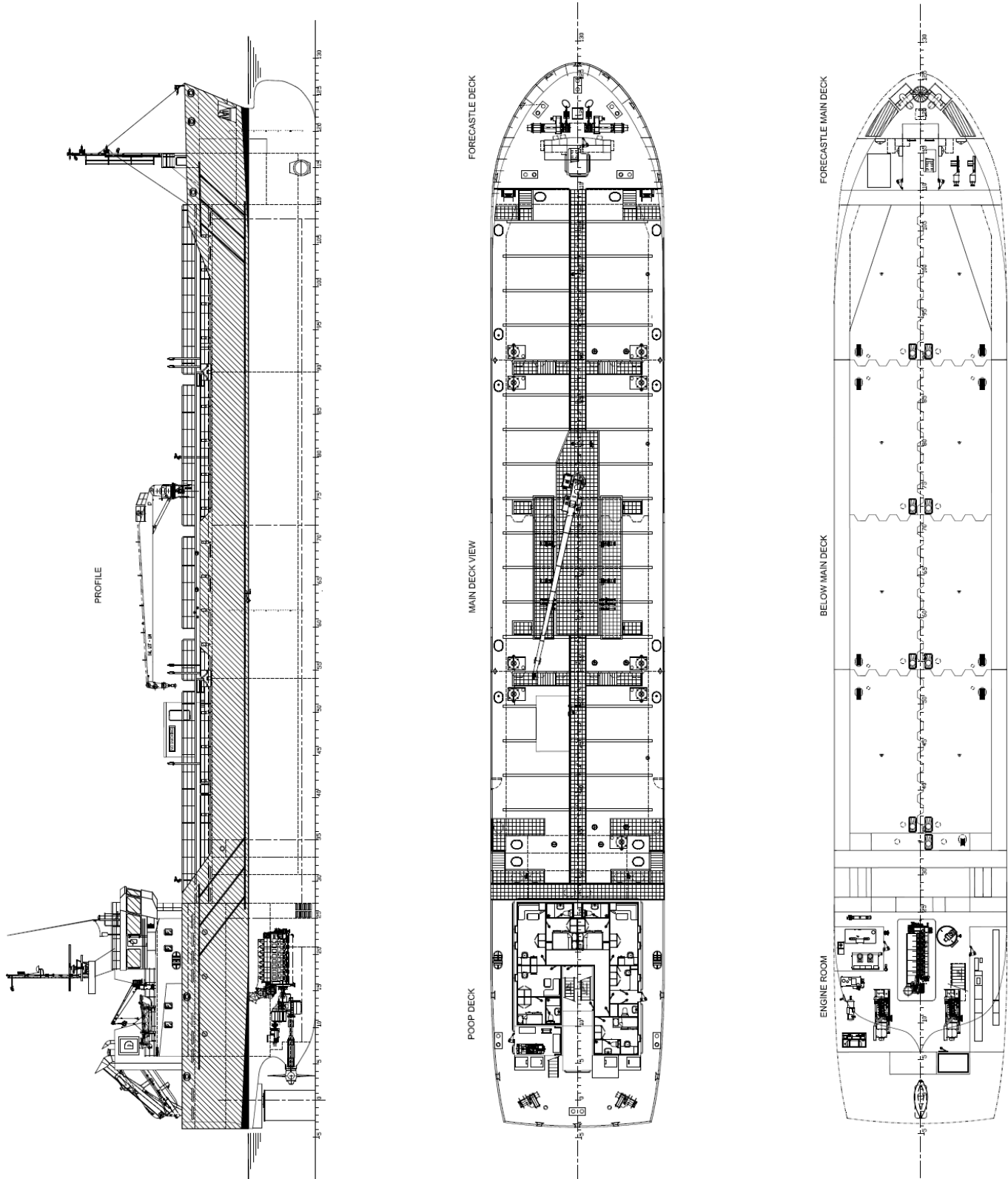
Radio telephone set	According to GMDSS for area A2
---------------------	--------------------------------

SPECIAL EQUIPMENT - OPTIONS

IMO II / IMO III
Blending installation
Cargo tank heating system + coils
Cargo tank cleaning system
Oil discharge monitoring system
Propulsion system including PTO/PTI
Closed ventilation system provided with two vapour return systems
Fixed or portable gas freeing fans
Pipeline purging installation
Tank monitoring

TANKER 4150

STANDARD



DAMEN

DAMEN SHIPYARDS GROUP

Avelingen-West 20
4202 MS Gorinchem
The Netherlands

P.O. Box 1
4200 AA Gorinchem
The Netherlands

phone +31 (0)183 63 99 22
fax +31 (0)183 63 21 89

info@damen.com
www.damen.com

© No part of the leaflet may be reproduced in any form, by print, photo print, microfilm, or any other means, without written permission from Damen Shipyards Group