



TANKER 2500

STANDARD

PICTURE OF SIMILAR VESSEL

GENERAL

Basic functions	Transportation of oil/refined products
Classification	Lloyd's Register of Shipping ✳ 100 A1, Double Hull Oil Tanker, ESP ✳ LMC, UMS
	Max. specific weight cargo 1,025 ton/m ³

DIMENSIONS

Length overall	84.00 m
Length b.p.p.	80.70 m
Beam moulded	11.30 m
Depth moulded	6.75 m
Draft	4.45 m
Deadweight	2,500 t
Gross tonnage	1,850 t

TANK CAPACITIES

Ballast water	1,460 m ³
Fuel oil (HFO)	120 m ³
Fuel oil (MGO)	30 m ³
Potable water	20 m ³
Sewage	7 m ³
Lubrication oil	8 m ³

TANK CAPACITIES, CARGO

Segregation 1, 2 tanks (100%)	1,100 m ³
Segregation 2, 4 tanks (100%)	1,400 m ³
Total cargo tank capacity	2,500 m ³

Slop tank, 1 tank (100%)	35 m ³
--------------------------	-------------------

TANK SYSTEM, CARGO

Cargo pump(s), deck	2x 200 m ³
Slop pump(s), deck	1x 20 m ³
Stripping pump(s)	Via slop pump
Ventilation	Open ventilation
Tank cleaning	Butter wash hatches

PERFORMANCES

Speed, at d= 4.45 m 100%	11.5 kn
MCR, approx.	

PROPULSION SYSTEM

Main engine	Diesel (MGO), 1,290 kW at 1,000 rpm
Gearbox	Reverse reduction type
Stern tube	Oil lubricated
Propeller	Fixed pitch, 2,600 mm
Steering gear	Electric-hydraulic
Rudder	Spade type
Bow thruster	Electric, fixed pitch, 200 kW

ELECTRICAL EQUIPMENT

Generator set(s)	2x Diesel, approx. 240 kW
	1x Diesel, emergency, approx. 56 kW
Shore supply	1x 440 V, 100A, 50 m cable

DECK LAY-OUT

Winch(es)	1x Electric-hydraulic anchor, with 2x warping heads
	1x Capstan aft
Crane(s)	1x Electric-hydraulic, hose handling type
Lifesaving	2x Liferafts
	1x Rescue boat
	1x Freefall life boat

SECONDARY SHIP SYSTEMS

Compressor(s)	2x Starting air
Separator(s)	1x Fuel oil
	1x Bilge water acc. Marpol
Pump(s)	1x Ballast Water Treatment Unit
	2x General Service
	1x Emergency firefighting
	1x Fuel oil transfer
Firefighting system	CO ₂ for engine room

ACCOMMODATION

Crew	6 persons, with heating, ventilation and air-conditioning
------	---

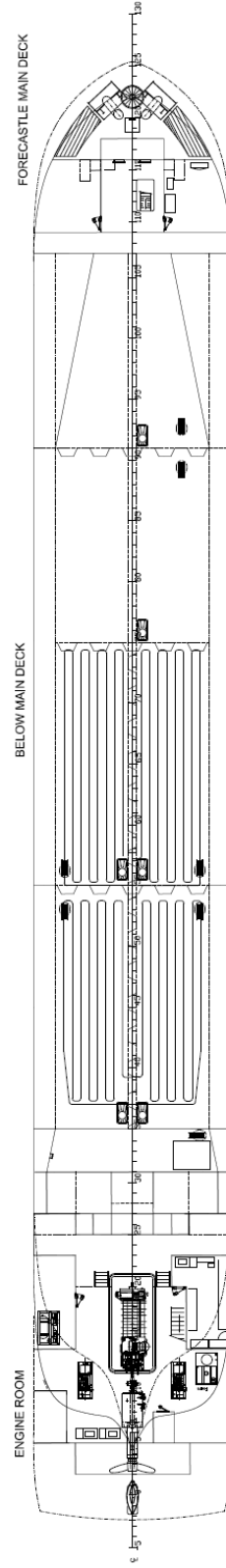
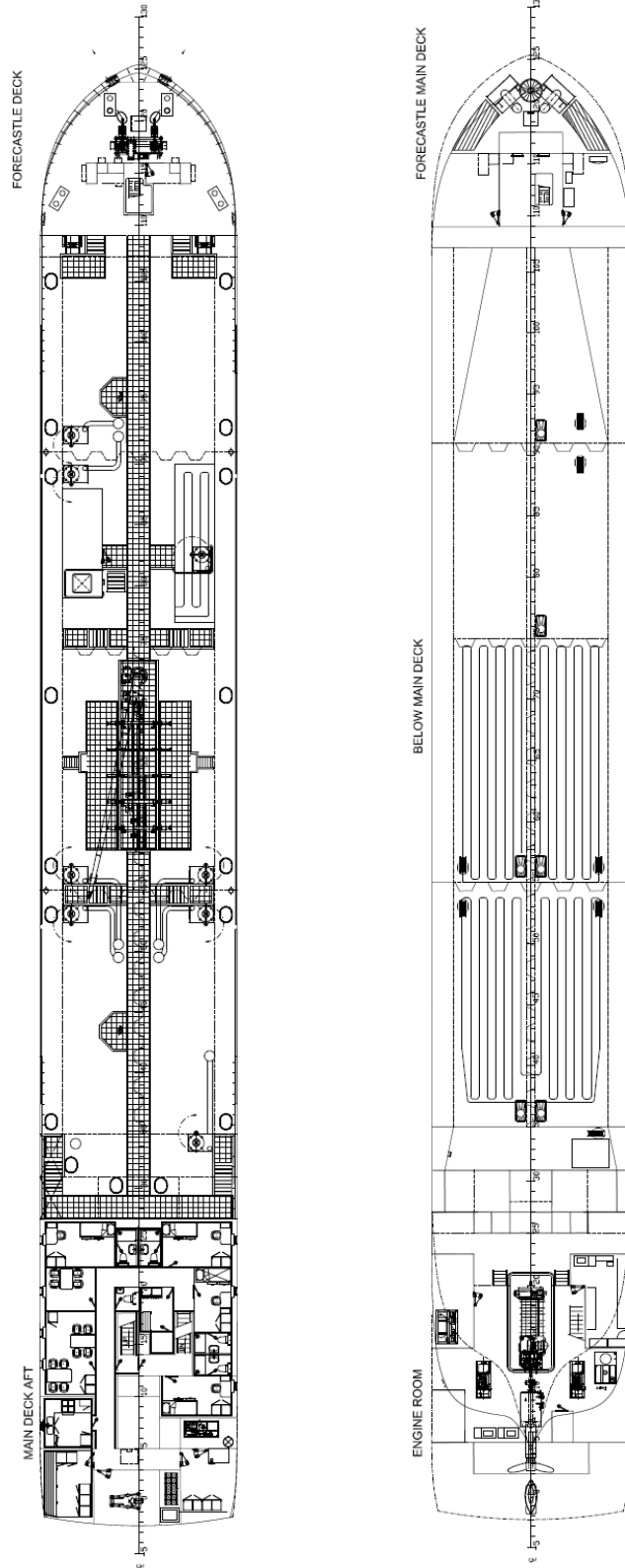
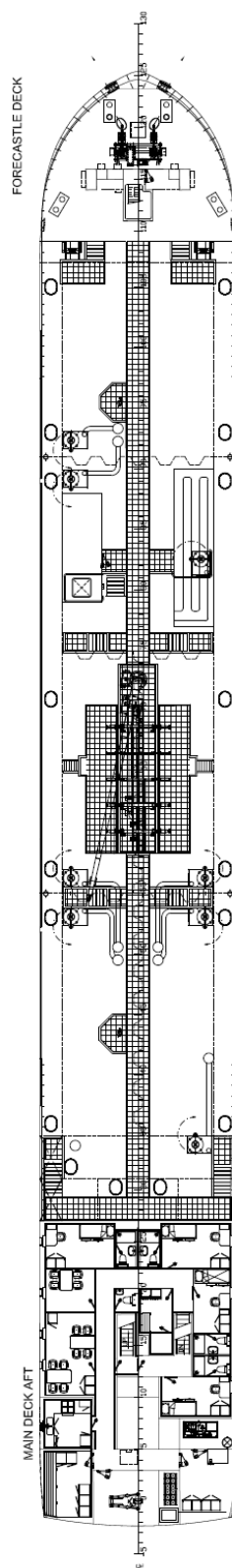
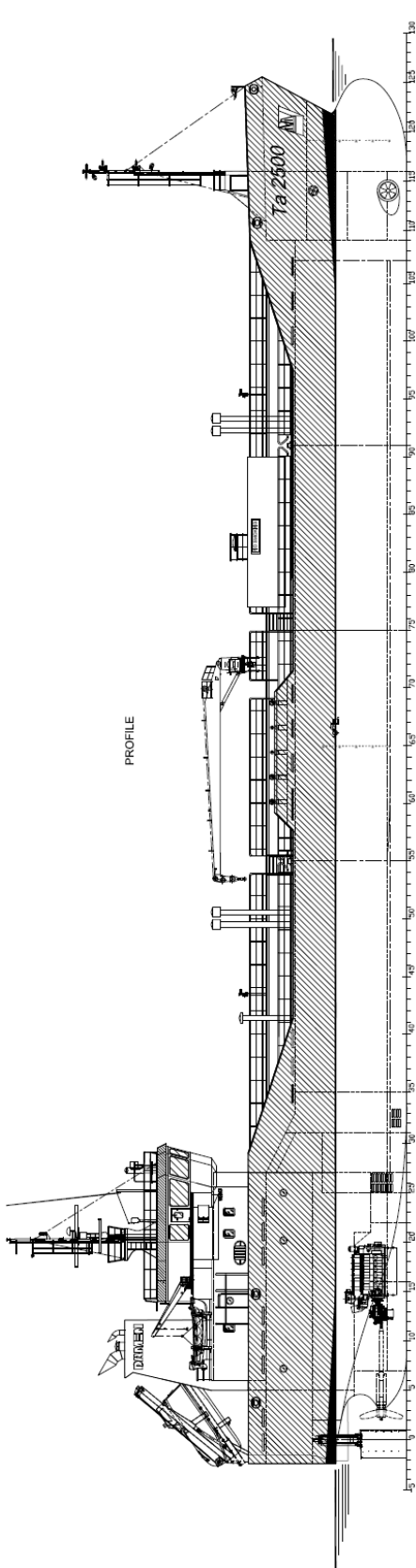
NAUTICAL AND COMMUNICATION EQUIPMENT

Radio telephone set	According to GMDSS for area A2
---------------------	--------------------------------

SPECIAL EQUIPMENT - OPTIONS

IMO II / IMO III	
Blending installation	
Cargo tank heating system + coils	
Cargo tank cleaning system	
Oil discharge monitoring system	
Propulsion system including PTO/PTI	
Closed ventilation system provided with two vapour return systems	
Fixed or portable gas freeing fans	
Pipeline purging installation	
Tank monitoring	

TANKER 2500 STANDARD



DAMEN

DAMEN SHIPYARDS GROUP

Avelingen-West 20
4202 MS Gorinchem
The Netherlands

P.O. Box 1
4200 AA Gorinchem
The Netherlands

phone +31 (0)183 63 99 22
fax +31 (0)183 63 21 89

info@damen.com
www.damen.com

© No part of the leaflet may be reproduced in any form, by print, photo print, microfilm, or any other means, without written permission from Damen Shipyards Group