



DAMEN LIQUEFIED GAS TANKER 6300 LPG STANDARD

GENERAL

Basic functions	Transporting a defined list of products, such as liquefied petroleum gasses, ammonia and vinyl chloride monomer.
Classification	Bureau Veritas ✳ 1 HULL ✳ MACH, ✳ AUT-UMS, ✳ AVM-APS, ✳ SYS-NEQ1 Cleanship, Mon-Shaft, InWaterSurvey, BWMP(T), ComfNoise3. Liquefied Gas Carrier, Ship type 2G, -48°C, 972 kg / m ³ , 4,5 bar (g)

DIMENSIONS

Length o.a.	112,70	m
Length b.p.p.	109,70	m
Beam mld.	18,60	m
Depth to main deck at side	10,80	m
Draught design (s.g. =0,60)	5,65	m
Gross tonnage	6.900	GT
Deadweight all told at draught = 6,80 m	6.700	t

TANK CAPACITIES, DOMESTIC

Fuel oil (HFO)	350	m ³
Fuel oil (MGO)	350	m ³
Ballast water	3.200	m ³
Potable water	90	m ³

TANK CAPACITIES, CARGO

Cargo tanks (2 tanks), 100%	6.300	m ³
-----------------------------	-------	----------------

CARGO TANKS

IMO type C tanks (2)	
Minimum cargo temperature	-48 C
Maximum cargo gravity	0,972 ton/ m ³
Min. / max. pressure	0,7 up to 4,5 bar (g)

CARGO PUMPS

2 electric deepwell pumps, each 400 m³/hr

PERFORMANCES (APPROX.)

Trial speed (at a draught of 6,8m)	13,6	kn
------------------------------------	------	----

PROPULSION

Main engine output 3.920 kW at 600-750 rpm
Controllable pitch propeller, 4.000 mm
Shaft generator, 1,000 kW e, 60 Hz

DECK LAY-OUT AND EQUIPMENT

- 1 Electric/hydraulic mooring winch fore, one warping head, two mooring drums
- 2 Electric/hydraulic mooring winch aft, with warping head, two mooring drums
- 1 Rescue boat
- 2 Life rafts
- 1 Free fall life boat
- 1 Electric/hydraulic hose handling crane

EQUIPMENT

Bow thruster, E-driven, fixed pitch, 400 kW
Steering gear, RAM type
Rudder, balance and spade type
Co₂ system for engine room
2 open cycle cargo reliquefaction systems
cargo heater (propane) from -42 C to 0 C

AUXILIARY

- 2 Diesel generator sets, each 1,000 kW e, 60 Hz
- 1 Emergency generator set, 143 kW e, 60 Hz
- 1 Bilge water separator, acc. to Marpol reg.
- 2 Self-cleaning HFO/MGO separators
- 1 fresh water generator, capacity 10t/24hr

PIPE LINE SYSTEM

2 cross over manifold
Loading / unloading rate 800 m³

TANK MONITORING

Level
Pressure
Temperature
Gas detection alarms

ACCOMMODATION

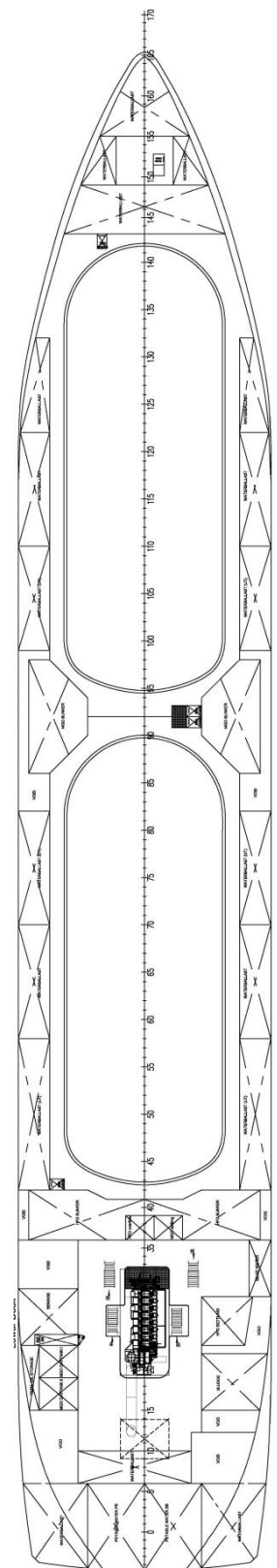
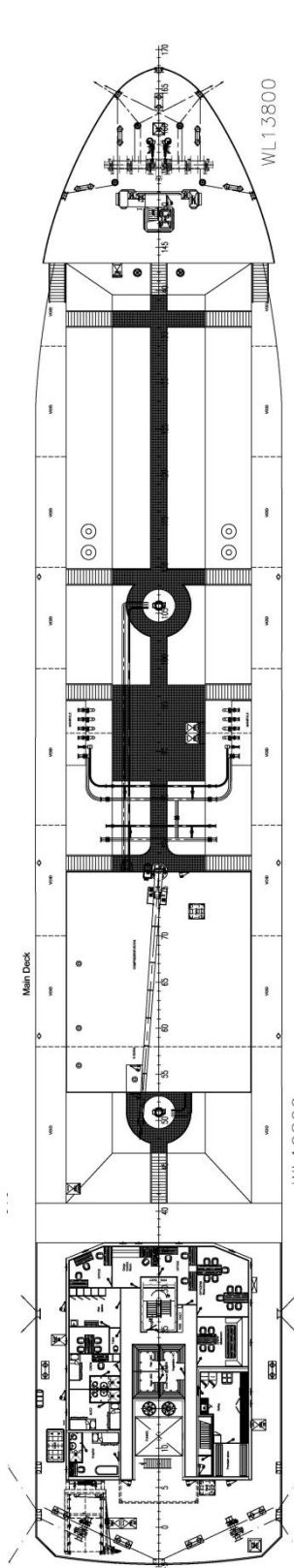
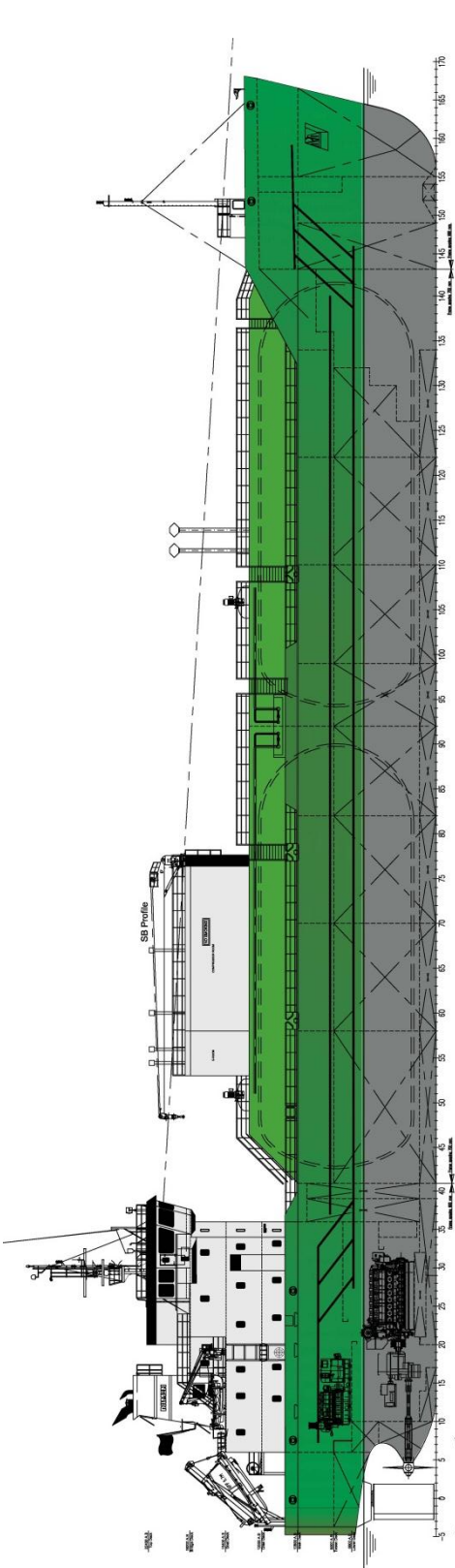
Crew, passengers, Suez crew 22 persons

NAUTICAL EQUIPMENT

Radio equipment according to GMDSS for area A3

OPTIONS

Main engine running on GO, HFO
Gas electric propulsion



DAMEN LIQUEFIED GAS TANKER 6300 LPG STANDARD



DAMEN SHIPYARDS GORINCHEM

Member of the DAMEN SHIPYARDS GROUP 

Industrieterrein Avelingen West 20
4202 MS Gorinchem

P.O. Box 1
4200 AA Gorinchem
The Netherlands

phone +31 (0)183 63 99 11
fax +31 (0)183 63 21 89

info@damen.com
www.damen.com

Rev. 9 februari 2016

Registered at the Chamber of Commerce, no. 23036357, under the name BV Scheepswerf Damen Gorinchem.
All our offers are without engagement unless stated otherwise.
All activities carried out in accordance with the VNSI General Yard Conditions (Netherlands Shipbuilding Industry Association).