



LIQUEFIED GAS CARRIER 6500 LNG

STANDARD

PICTURE OF SIMILAR VESSEL

GENERAL

Basic functions	Transporting of liquefied gas, especially suitable for carrying and transporting LNG
Classification	Bureau Veritas ✱ I Hull, ✱ Mach, ✱ Aut-UMS, Liquefied Gas Carrier type 2G (-163°C, 0.50 t/m ³)

DIMENSIONS

Length overall	105.90 m
Length b.p.p.	103.10 m
Beam moulded	18.60 m
Depth	11.75 m
Draft	5.60 m
Deadweight	4,086 t

TANK CAPACITIES

Ballast water	2,860 m ³
Fuel oil	410 m ³
Potable water	130 m ³
Sewage	50 m ³
Dirty oil	16 m ³

TANK SYSTEM, CARGO

Tank 1, capacity (100%)	2,500 m ³
Tank 2, capacity (100%)	4,000 m ³
Loading	1,200 m ³ /h
Discharge	1,200 m ³ /h

PERFORMANCES

Speed, (at d= 5.60 m and 100% MCR), approx.	13.0 kn
---	---------

PROPULSION SYSTEM

Main engine	Diesel (MGO) 3,000 kW at 600 rpm
Gearbox	Reduction type with PTO
Stern tube	Oil lubricated
Propeller	Controllable pitch, 4,000 mm
Steering gear	Electric-hydraulic
Rudder	Spade type
Bow thruster	Electric driven, fixed pitch, 400 kW

ELECTRICAL EQUIPMENT

Generator set(s)	2x Diesel, each 400 kW at 1,500 rpm 1x Shaft, 400 kW 1x Diesel emergency, 65 kW at 1,500 rpm
Shore supply	1x 400V, 60A, 100 m cable

DECK LAY-OUT

Winch(es)	1x Electric-hydraulic anchor/mooring, with 2x warping head and 2x rope drum 2x Electric-hydraulic mooring, with 1x warping head and 1x rope drum aft
Crane(s)	1x Electric-hydraulic, hose handling type
Lifesaving	2x Life rafts 1x Free fall life boat 1x Rescue boat

SECONDARY SHIP SYSTEMS

Compressor(s)	2x Starting air (by pass working air)
Separator(s)	1x Lubrication oil 1x Fuel oil 1x Bilge water acc. Marpol
Pump(s)	1x Ballast Water Treatment unit 2x General Service 1x Emergency firefighting 2x Fuel oil transfer
Firefighting system	CO ₂ for engine room Dry powder and sprinkler for cargo area

ACCOMMODATION

Crew	16 persons, 2 passengers and 4 Suez Crew with heating, ventilation and air-conditioning
------	---

NAUTICAL AND COMMUNICATION EQUIPMENT

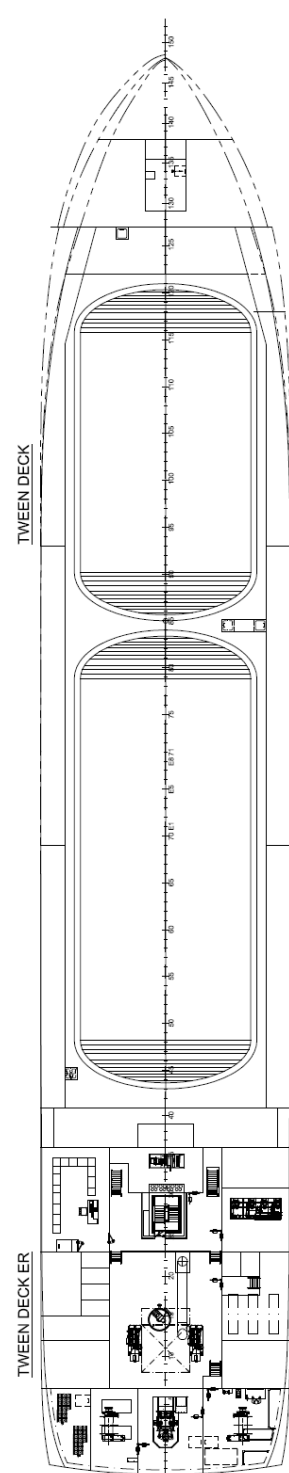
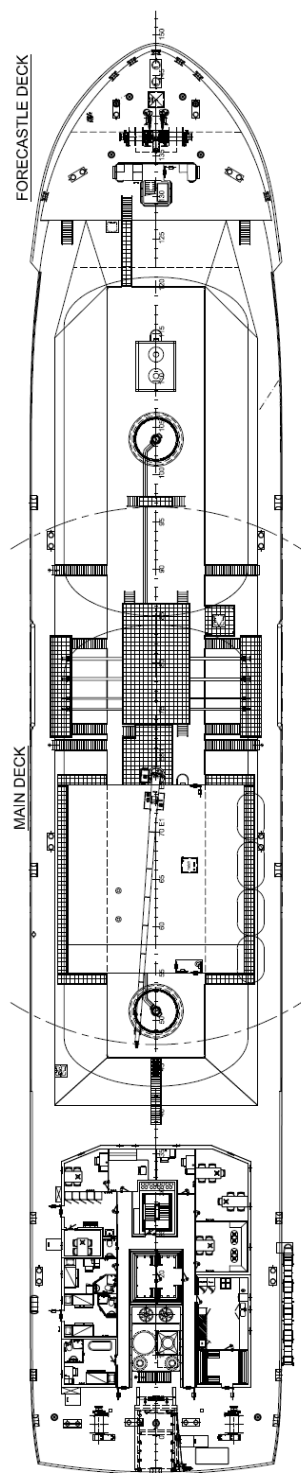
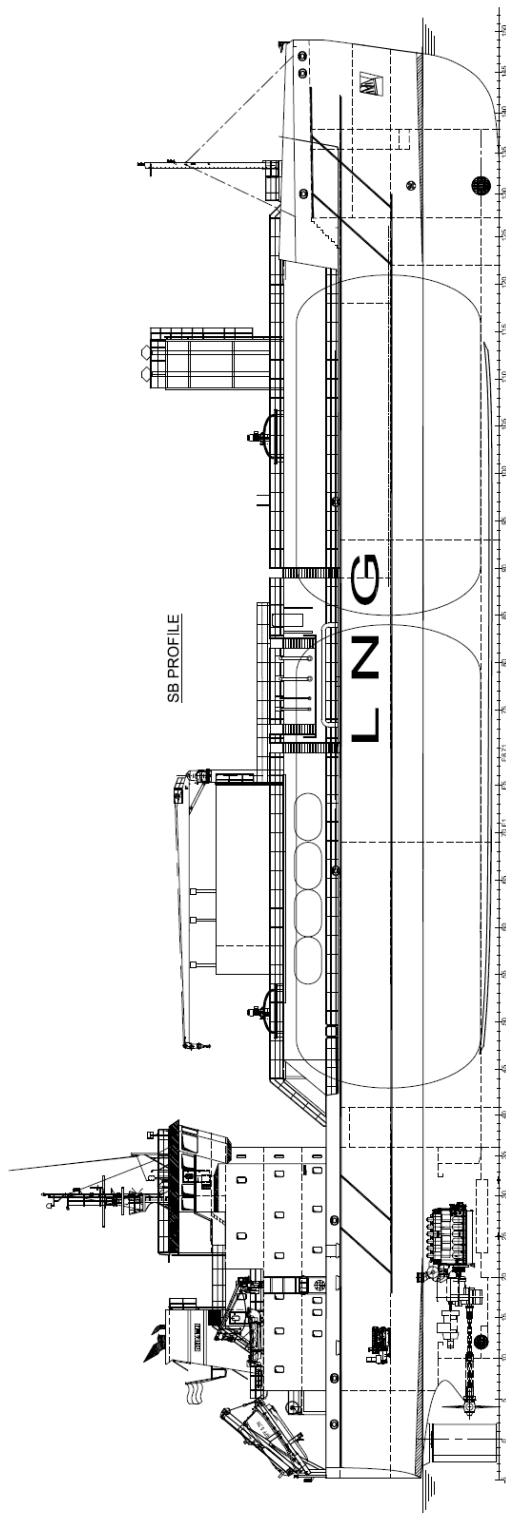
Radio telephone set	According to GMDSS for area A3
---------------------	--------------------------------

SPECIAL EQUIPMENT - OPTIONS

Dual fuel main engine
Dual fuel generators
100% gas generators
Selective catalytic reduction
LPG
STS (Ship To Ship Transfer System)
CTS (Custody Transfer System)
Reliquefaction
Stern thruster
Knuckle boom bunker crane

LIQUEFIED GAS CARRIER 6500 LNG

STANDARD



DAMEN

DAMEN SHIPYARDS GROUP

Avelingen-West 20
4202 MS Gorinchem
The Netherlands

P.O. Box 1
4200 AA Gorinchem
The Netherlands

phone +31 (0)183 63 99 22
fax +31 (0)183 63 21 89

info@damen.com
www.damen.com