



LIQUEFIED GAS CARRIER 1500 LNG

STANDARD

PICTURE OF SIMILAR VESSEL

GENERAL

Basic functions	Transporting of liquefied gas, especially suitable for carrying and transporting LNG
Classification	Bureau Veritas ✱ I Hull, ✱ Mach, ✱ Aut-UMS, Liquefied Gas Carrier type 2G (-163°C, 0.50 t/m ³)

DIMENSIONS

Length overall	72.27 m
Length b.p.p.	67.70 m
Beam moulded	11.30 m
Depth	5.40 m
Draft	3.05 m
Air draft	11.00 m
Deadweight	900 t

TANK CAPACITIES

Ballast water	1,100 m ³
Fuel oil	100 m ³
Potable water	30 m ³
Sewage	6 m ³
Dirty oil	2 m ³

TANK SYSTEM, CARGO

Tank 1, capacity (100%)	1,500 m ³
Loading	175 m ³ /h
Discharge	175 m ³ /h

PERFORMANCES

Speed (at d= 2.00 m and 100% MCR), approx.	10.0 kn
--	---------

PROPULSION SYSTEM

Main engine	Diesel (MGO), 746 kW at 1,600 rpm
Gearbox	Reduction type
Stern tube	Oil lubricated
Propeller	Fixed pitch, 2,000 mm
Steering gear	Electric-hydraulic
Rudder	Spade type
Bow thruster	Electric driven, fixed pitch, 250 kW

ELECTRICAL EQUIPMENT

Generator set(s)	2x Diesel, each 250 kW at 1,500 rpm 1x Diesel emergency, 50 kW at 1,500 rpm
Shore supply	1x 400V, 60A, 100 m cable

DECK LAY-OUT

Winch(es)	1x Electric-hydraulic anchor/mooring, with 2x warping head 1x Electric-hydraulic mooring, aft with 1x warping head and 1x rope drum
Crane(s)	1x Electric-hydraulic, hose handling type
Lifesaving	2x Life rafts 1x Free fall life boat 1x Rescue boat

SECONDARY SHIP SYSTEMS

Compressor(s)	1x Working air
Separator(s)	1x Non self-cleaning fuel oil 1x Bilge water acc. Marpol 1x Ballast Water Treatment unit
Pump(s)	2x General Service 1x Emergency firefighting 2x Fuel transfer
Firefighting system	CO ₂ for engine room

ACCOMMODATION

Crew	6 persons with heating, ventilation and air-conditioning
------	--

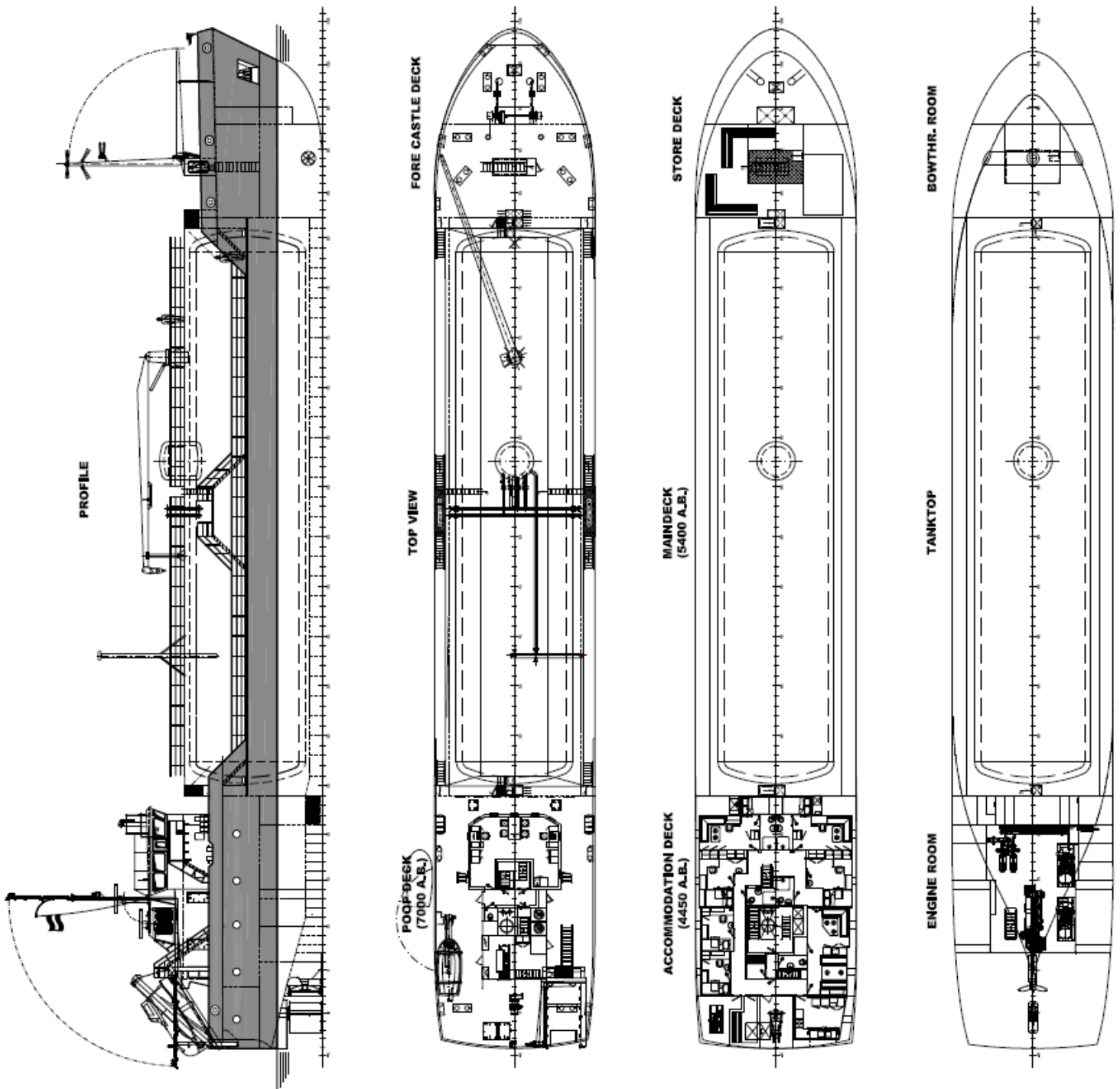
NAUTICAL AND COMMUNICATION EQUIPMENT

Radio telephone set	According to GMDSS for area A1
---------------------	--------------------------------

SPECIAL EQUIPMENT - OPTIONS

LPG	
Dual fuel main engine	
Dual fuel generators	
100% gas generators	
Selective catalytic reduction	
STS (Ship To Ship Transfer System)	
CTS (Custody Transfer System)	
Reliquefaction	
Stern thruster	
Knuckle boom bunker crane	

LIQUEFIED GAS CARRIER 1500 LNG STANDARD



DAMEN

DAMEN SHIPYARDS GROUP

Avelingen-West 20
4202 MS Gorinchem
The Netherlands

P.O. Box 1
4200 AA Gorinchem
The Netherlands

phone +31 (0)183 63 99 22
fax +31 (0)183 63 21 89

info@damen.com
www.damen.com