



CONTAINER FEEDER 800

STANDARD

PICTURE OF SIMILAR VESSEL

GENERAL

Basic functions	Transport of containers in the hold(s) and on hatches
Classification	DNV GL ✕ 100 A5, Container Ship ✕ MC, AUT

DIMENSIONS

Length overall	140,64 m
Length b.p.p.	130,00 m
Beam moulded	21,80 m
Depth moulded	9,50 m
Draft design	7,33 m
Deadweight	9.300 t
Tonnage measurement	7.950 GT

TANK CAPACITIES

Ballast water	4.590 m ³
Fuel oil (MGO)	975 m ³
Potable water	75 m ³
Sewage	25 m ³
Lubrication oil	50 m ³

HOLDS AND HATCH COVERS

Weather tight hatches	Hydraulic folding type
Hold 1 fore (LxB)	28,44 m x 18,60/13,20 m
Hold 2 mid (LxB)	28,44 m x 18,60 m
Hold 3 aft (LxB)	28,44 m x 18,60 m

CONTAINERS

	TEU	TEU/FEU	30'	45'	48'/49'
In hold	206	12/97	135	97	-
On deck/hatches	597	51/269	376	232	40
Total	803	63/366	511	329	40

Reefer connections 90 pcs

PERFORMANCES

Speed, at d= 7,33 m 17,0 kn
100% MCR approx.

PROPULSION MANOEUVRING SYSTEM

Main engine	Diesel (MGO), 6.000 kW at 500 rpm
Gearbox	Reduction type
Stern tube	Oil lubricated
Propeller	Controllable pitch, 4.900 mm
Steering gear	Electric-hydraulic
Rudder	Spade type
Bow thruster	Electric, controllable pitch, 700 kW

ELECTRICAL EQUIPMENT

Generator set(s)	2x Diesel (MGO), each approx. 425 kW 1x Shaft, approx. 1.600 kW 1x Diesel emergency, approx. 100 kW
Shore supply	1x 440V, 125A, 50 m cable

DECK LAY-OUT

Winch(es)	2x Electric-hydraulic anchor/mooring, with 1x rope drum and 1x warping head 2x Electric mooring, with 1x rope drum and 1x warping head
Lifesaving	3x Life rafts 1x Rescue boat 1x Freefall life boat

SECONDARY SHIP SYSTEMS

Compressor(s)	2x Starting air
Separator(s)	1x Fuel oil 1x Lubrication oil 1x Bilge water acc. Marpol 1x Ballast Water Treatment Unit
Pump(s)	2x General Service 1x Emergency firefighting 2x Fuel oil transfer
Firefighting system	CO ₂ for engine room and cargo holds
Ventilation	Holds minimum 6 air changes per hour

ACCOMMODATION

Crew 15 persons, with heating, ventilation and air-conditioning

NAUTICAL AND COMMUNICATION EQUIPMENT

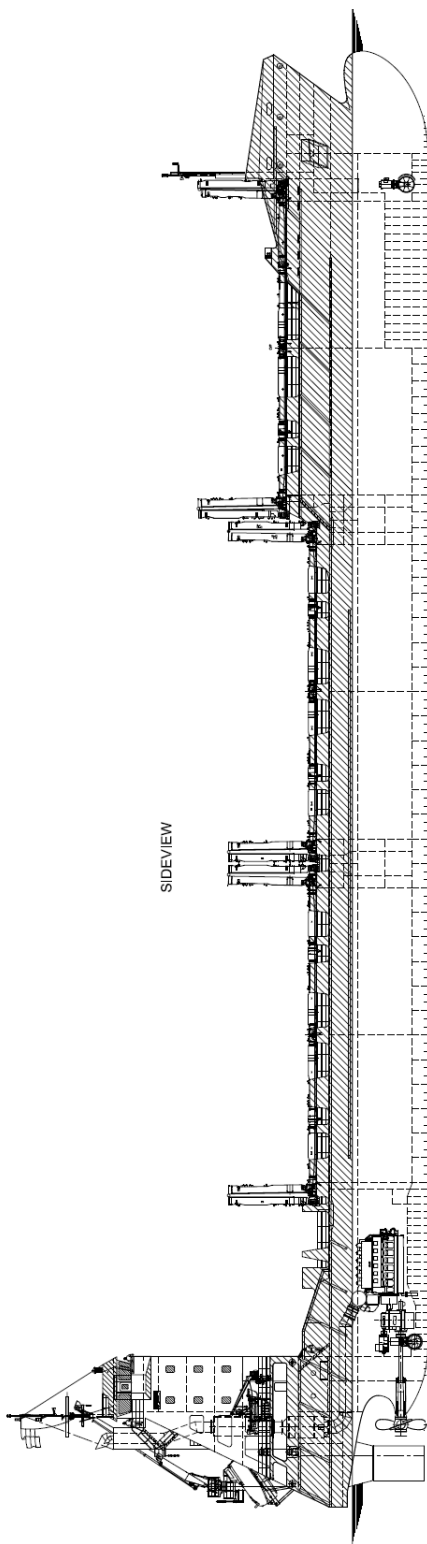
Radio telephone set According to GMDSS for area A3

SPECIAL EQUIPMENT - OPTIONS

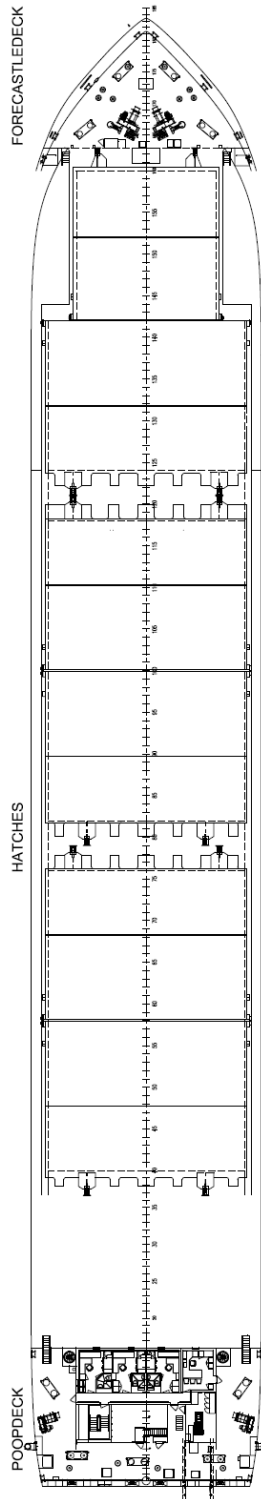
Finnish-Swedish Ice Class 1A
Inwatersurvey
Main engine suitable for heavy fuel
Main engine suitable for LNG
100% gas generators
Selective Catalytic Reduction
Scrubber
Cell guides
Anti-heeling system
Stern thruster
2x Cargo handling cranes

CONTAINER FEEDER 800

STANDARD



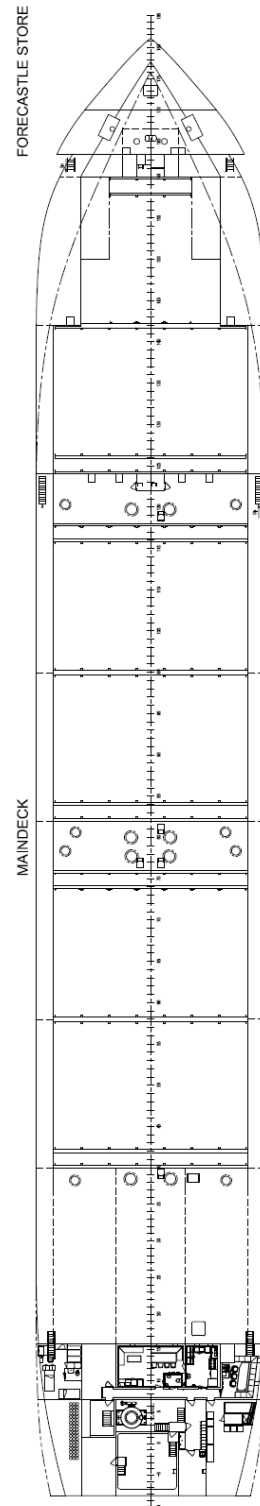
SIDEVIEW



FORECASTLEDECK

HATCHES

POOPDECK



FORECASTLE STORE

MAINDECK



DAMEN SHIPYARDS GROUP

Avelingen-West 20
4202 MS Gorinchem
The Netherlands

P.O. Box 1
4200 AA Gorinchem
The Netherlands

phone +31 (0)183 63 99 22
fax +31 (0)183 63 21 89

info@damen.com
www.damen.com

© No part of the leaflet may be reproduced in any form, by print, photo print, microfilm, or any other means, without written permission from Damen Shipyards Group