



DAMEN CONTAINER FEEDER® 800

“SAMSCHIP ENDEAVOUR”

GENERAL

| | |
|-----------------|---|
| YARD NUMBER | 568308 |
| DELIVERY DATE | February 2011 |
| BASIC FUNCTIONS | Transport of containers |
| CLASSIFICATION | GL +100 A5 E3 GL +MC E3 AUT |
| REGULATIONS | Equipped for dangerous goods according to SOLAS reg. 19 II-2, excl. Class VII. Sprinklers in hold 1 |
| FLAG | Cyprus |
| OWNER | Samskip Endeavour B.V. |

DIMENSIONS

| | |
|---------------|----------|
| LENGTH O.A. | 140.64 m |
| LENGTH P.P. | 130.00 m |
| BEAM MLD. | 21.80 m |
| DEPTH MLD. | 9.50 m |
| DRAUGHT | 7.33 m |
| DEADWEIGHT | 9340 ton |
| GROSS TONNAGE | 7987 GT |

TANK CAPACITIES

| | |
|-----------------|---------------------|
| HFO (RMG 35) | 880 m ³ |
| MGO (DMA) | 105 m ³ |
| LUBRICATION OIL | 48 m ³ |
| DIRTY OIL | 20 m ³ |
| SLUDGE | 21 m ³ |
| SEWAGE | 26 m ³ |
| POTABLE WATER | 74 m ³ |
| BALLAST WATER | 4597 m ³ |

| CONTAINERS | TEU | TEU/FEU | 30' | 45' | 48'/49' |
|------------|-----|---------|-----|-----|---------|
| IN HOLDS | 206 | 12/97 | 135 | 97 | - |
| ON DECK | 579 | 69/264 | 376 | 232 | 40 |
| TOTAL | 803 | 81/361 | 511 | 329 | 40 |

PERFORMANCE

| | |
|-------|---|
| SPEED | 18 kn at 7.32 m draft with 85% MCR, 200 kW PTO and 10% sea-margin |
|-------|---|

PROPULSION SYSTEM

| | |
|----------------|------------------------|
| MAIN ENGINE | MAK 9M43 |
| POWER | 8400 kW |
| PROPELLER | 4900 mm, 4 blades, CPP |
| BOW THRUSTER | 700 kW, 4 blades, CPP |
| STERN THRUSTER | 500 kW, 4 blades, CPP |
| RUDDER | Balance type |
| STEERING GEAR | Rotary vane |

HOLDS AND HATCH COVERS

| | |
|---------------------|-------------------------------------|
| WEATHERDECK HATCHES | Hydraulic multi folding type |
| HOLD 1 | Dimensions 28.44 m x 18.60/ 13.20 m |
| HOLD 2 | Dimensions 28.44 m x 18.60 m |
| HOLD 3 | Dimensions 28.44 m x 18.60 m |

AUXILIARY EQUIPMENT

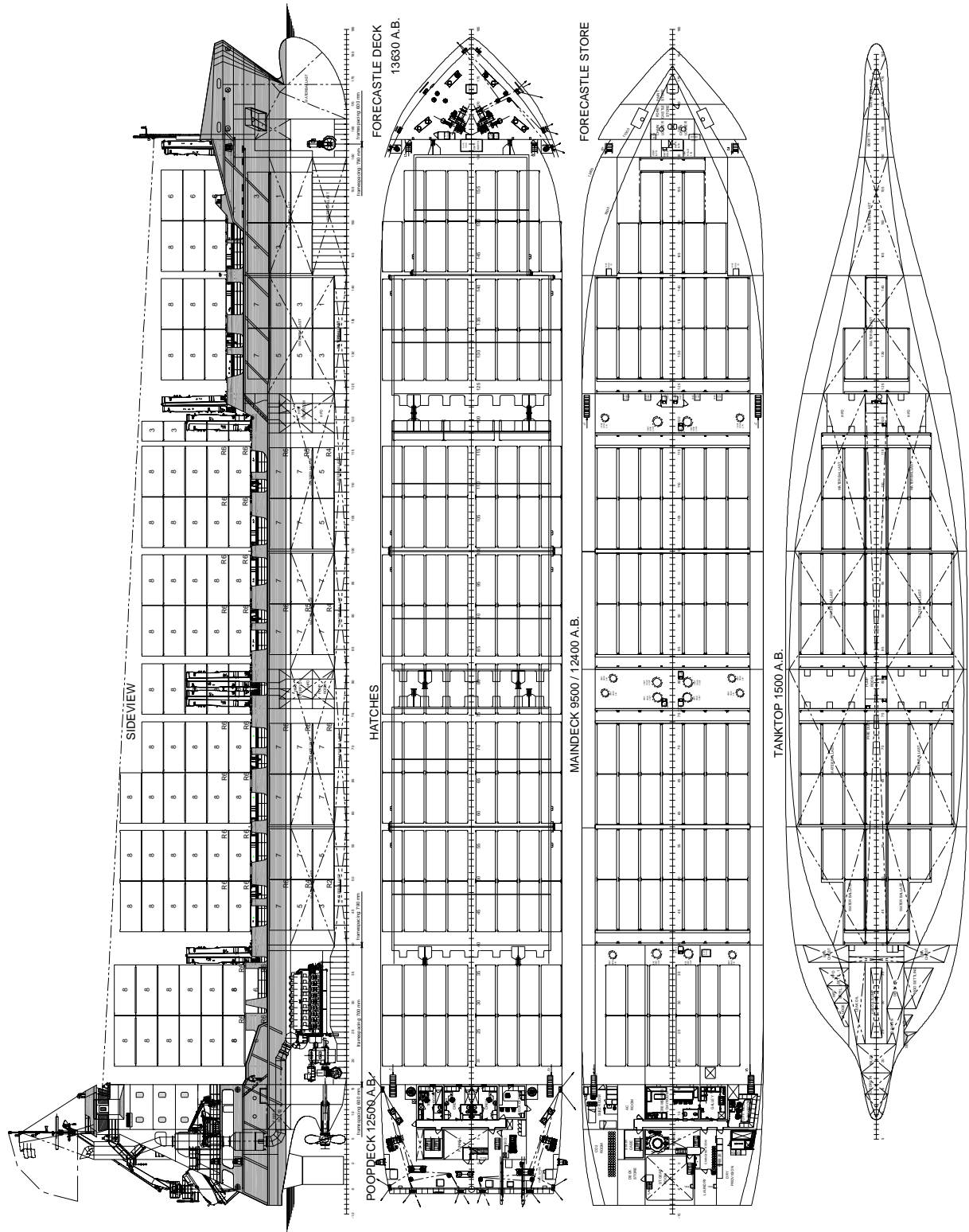
| | |
|----------------------|--|
| SHAFT GENERATOR | 1x 2000 kVA, 60 Hz |
| DIESEL GENERATORSETS | 2x 530 kVA, 60 Hz |
| EMERGENCY GEN. SET | 1x 124 kVA, 60 Hz |
| ANTI HEELING SYSTEM | 1120 m ³ /hr |
| FIRE FIGHTING | CO ₂ system for engine room and cargo holds |
| SPRINKLERS | In hold 1 |

DECK LAY-OUT

| | |
|------------------------|--|
| ANCHOR/MOORING WINCHES | 2x electric self-tensioning on forecastle deck, with a single drum and warping head |
| MOORING WINCHES | 2x electric self-tensioning on poop deck, with a single drum and warping head |
| DECK CRANE | 1x for free-fall boat and provisions |
| DECK CRANE | 1x for rescue boat and life raft |
| CONTAINER FITTINGS | For 20', 30', 40', and 45' on tanktop and hatch covers and 48' and 49' for one layer on deck |
| MOVABLE CELL GUIDES | All position suitable for 9'6" high containers |
| REEFER PLUGS | In holds for 40' and 45' containers 120 on main deck, 30 in hold 2, 30 in hold 3 |

ACCOMMODATION

For a crew of 15 persons with heating, ventilation and air-conditioning



DAMEN CONTAINER FEEDER® 800

"SAMSKIP ENDEAVOUR"

DAMEN

DAMEN SHIPYARDS BERGUM

Member of the DAMEN SHIPYARDS GROUP



Damsingel 4
9262 NC Sumar

P.O. Box 7
9250 AA Burgum

phone +31 (0)511 467 222
fax +31 (0)511 464 259

info@damen-bergum.nl
www.damen-bergum.nl

The Netherlands