



## DAMEN CONTAINER FEEDER® 800 "DORIS SCHEPERS"

### GENERAL

YARD NUMBER	8301
DELIVERY DATE	July 2007
BASIC FUNCTIONS	Transport of containers
CLASSIFICATION	GL +100 A5 E3 GL +MC E3 AUT
REGULATIONS	Equipped for dangerous goods according to SOLAS reg. 19 II-2, excl. Class VII. Sprinklers in hold 1
FLAG	Antigua and Barbuda
OWNER	HS Schiffahrts GmbH & Co. KG MS "Doris Schepers"

### DIMENSIONS

LENGTH O.A.	140.64 m
LENGTH P.P.	130.00 m
BEAM MLD.	21.80 m
DEPTH MLD.	9.50 m
DRAUGHT	7.32 m
DEADWEIGHT	9340 ton
GROSS TONNAGE	7987 GT

### TANK CAPACITIES

HFO (RMG 35)	880 m <sup>3</sup>
MGO (DMA)	105 m <sup>3</sup>
LUBRICATION OIL	48 m <sup>3</sup>
DIRTY OIL	20 m <sup>3</sup>
SLUDGE	21 m <sup>3</sup>
SEWAGE	26 m <sup>3</sup>
POTABLE WATER	74 m <sup>3</sup>
BALLAST WATER	4597 m <sup>3</sup>

CONTAINERS	TEU	TEU/FEU	30'	45'	48'/49'
IN HOLDS	206	12/97	135	97	-
ON DECK	597	69/264	376	232	40
TOTAL	803	81/361	511	329	40

### PERFORMANCE

SPEED	18 kn at 7.32 m draft with 85% MCR, 200 kW PTO and 10% sea-margin
-------	---

### PROPULSION SYSTEM

MAIN ENGINE	MAK 9M43
POWER	8400 kW
PROPELLER	4900 mm, 4 blades, CPP
BOW THRUSTER	700 kW, 4 blades, CPP
STERN THRUSTER	500 kW, 4 blades, CPP
RUDDER	Balance type
STEERING GEAR	Rotary vane

### HOLDS AND HATCH COVERS

WEATHERDECK HATCHES	Hydraulic multi folding type
HOLD 1	Dimensions 28.44 m x 18.60/ 13.20 m
HOLD 2	Dimensions 28.44 m x 18.60 m
HOLD 3	Dimensions 28.44 m x 18.60 m

### AUXILIARY EQUIPMENT

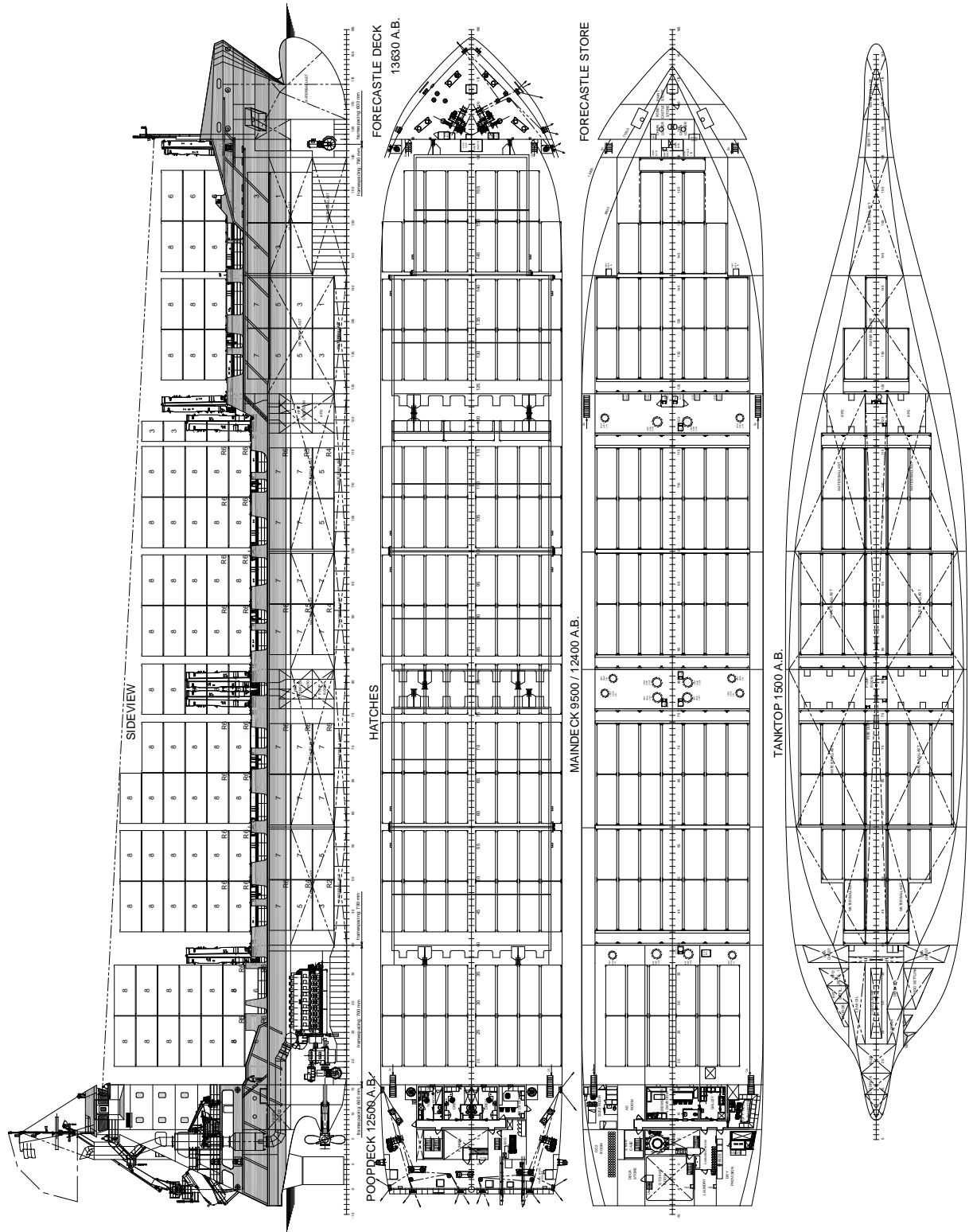
SHAFT GENERATOR	1x 2000 kVA, 60 Hz
DIESEL GENERATORSETS	2x 530 kVA, 60 Hz
EMERGENCY GEN. SET	1x 124 kVA, 60 Hz
ANTI HEELING SYSTEM	1120 m <sup>3</sup> /hr
FIRE FIGHTING	CO <sub>2</sub> system for engine room and cargo holds
SPRINKLERS	In hold 1

### DECK LAY-OUT

ANCHOR/MOORING WINCHES	2x electric self-tensioning on forecastle deck, with a single drum and warping head
MOORING WINCHES	2x electric self-tensioning on poop deck, with a single drum and warping head
DECK CRANE	1x for free-fall boat and provisions
DECK CRANE	1x for rescue boat and life raft
CONTAINER FITTINGS	For 20', 30', 40', and 45' on tanktop and hatch covers and 48' and 49' for one layer on deck
MOVABLE CELL GUIDES	In holds for 40' and 45' containers
REEFER PLUGS	120 on main deck, 30 in hold 2, 30 in hold 3

### ACCOMMODATION

For a crew of 15 persons with heating, ventilation and air-conditioning



# DAMEN CONTAINER FEEDER® 800

"DORIS SCHEPERS"

## DAMEN

DAMEN SHIPYARDS GORINCHEM

Member of the DAMEN SHIPYARDS GROUP



Industrieterrein Avelingen West 20  
4202 MS Gorinchem

P.O. Box 1  
4200 AA Gorinchem  
The Netherlands

phone +31 (0)183 63 99 11  
fax +31 (0)183 63 21 89

info@damen.nl  
www.damen.nl