



CONTAINER FEEDER 1700

STANDARD

PICTURE OF SIMILAR VESSEL

GENERAL

Basic functions	Transport of containers in the hold(s) and on hatches
Classification	DNV GL ✕ 100 A5, Container Ship ✕ MC, AUT

DIMENSIONS

Length overall	172,00 m
Length b.p.p.	162,00 m
Beam moulded	28,80 m
Depth moulded	14,20 m
Draft design	8,50 m
Deadweight	17.400 t
Tonnage measurement	18.550 GT

TANK CAPACITIES

Ballast water	8.250 m ³
Fuel oil (HFO)	1.250 m ³
Potable water	200 m ³
Sewage	40 m ³
Lubrication oil	30 m ³

HOLDS AND HATCH COVERS

Weather tight hatches	Pontoon type
Hold 1 fore (LxB)	1x 12,64 m x 15,48 m
Hold 2 mid (LxB)	2x 12,64 m x 25,80 m
Hold 3 mid (LxB)	2x 12,64 m x 25,80 m
Hold 4 mid (LxB)	2x 12,64 m x 25,80 m
Hold 5 aft (LxB)	1x 12,64 m x 25,80 m

CONTAINERS

	TEU	TEU/FEU	45'	Reefers
In hold	670	18/326	0	114
On deck/hatches	1.070	8/531	457	228
Total	1.740	26/857	457	342

Reefer connections	140 pcs
--------------------	---------

PERFORMANCES

Speed, at d= 8,50 m	18,0 kn
85% MCR approx.	

PROPULSION MANOEUVRING SYSTEM

Main engine	Diesel (HFO), 11.600 kW at 105 rpm
Stern tube	Oil lubricated
Propeller	Fixed pitch, 6.750 mm
Steering gear	Electric-hydraulic
Rudder	Spade type
Bow thruster	Electric, controllable pitch, 1.000 kW

ELECTRICAL EQUIPMENT

Generator set(s)	3x Diesel (MGO), each approx. 1.000 kW
	1x Diesel, emergency, approx. 200 kW
Shore supply	1x 440V, 125A, 50 m cable

DECK LAY-OUT

Winch(es)	2x Electric-hydraulic anchor/mooring, with 1x rope drum and 1x warping head
	2x Electric mooring, with 1x rope drum and 1x warping head
Crane(s)	2x Electric-hydraulic, cargo handling type 60 t/28 m - 35 t/37 m
Lifesaving	3x Life rafts
	1x Rescue boat
	1x Freefall life boat

SECONDARY SHIP SYSTEMS

Compressor(s)	2x Starting air
Separator(s)	2x Fuel oil
	2x Lubrication oil
	1x Bilge water acc. Marpol
Pump(s)	1x Ballast Water Treatment Unit
	2x General Service
	1x Emergency firefighting
	2x Fuel oil transfer
Firefighting system	CO ₂ for engine room and cargo holds
Ventilation	Holds minimum 6 air changes per hour

ACCOMMODATION

Crew	24 persons, with heating, ventilation and air-conditioning
------	--

NAUTICAL AND COMMUNICATION EQUIPMENT

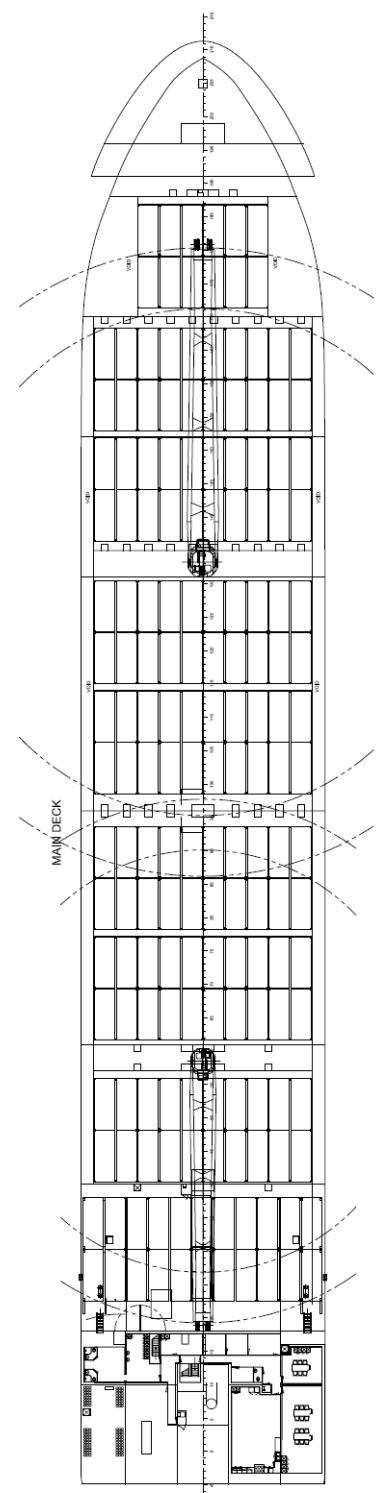
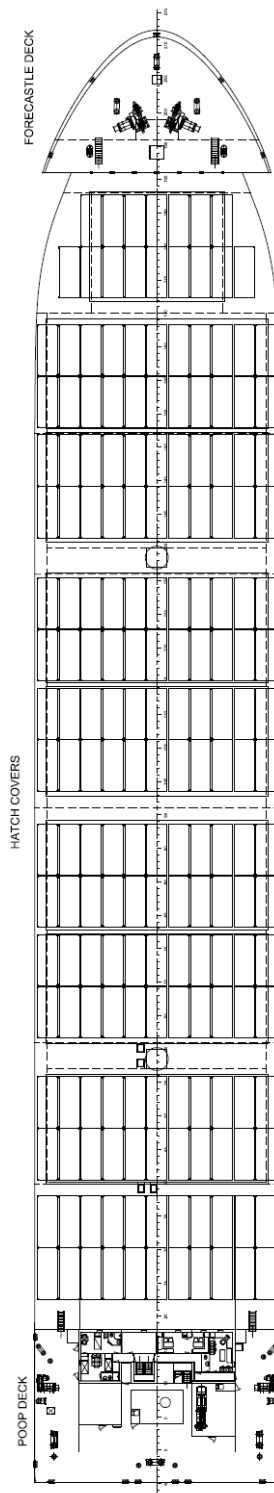
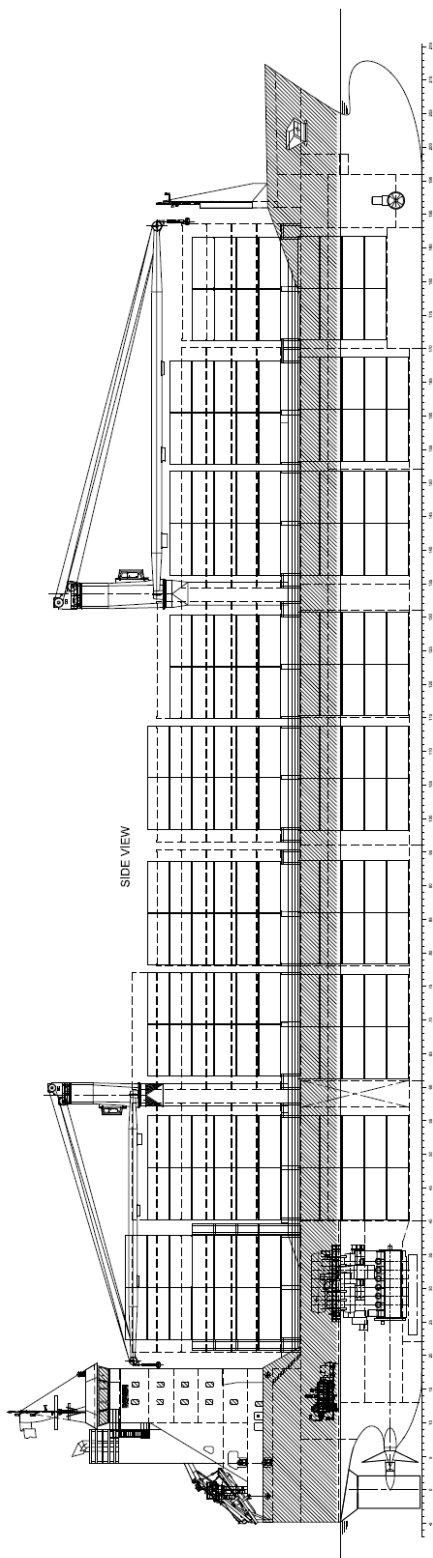
Radio telephone set	According to GMDSS for area A3
---------------------	--------------------------------

SPECIAL EQUIPMENT - OPTIONS

Finnish-Swedish Ice Class 1A
Inwatersurvey
Main engine suitable for LNG
100% gas generators
Selective Catalytic Reduction
Scrubber
Cell guides
Anti-heeling system
Stern thruster

CONTAINER FEEDER 1700

STANDARD



DAMEN

DAMEN SHIPYARDS GROUP

Avelingen-West 20
4202 MS Gorinchem
The Netherlands

P.O. Box 1
4200 AA Gorinchem
The Netherlands

phone +31 (0)183 63 99 22
fax +31 (0)183 63 21 89

info@damen.com
www.damen.com

© No part of the leaflet may be reproduced in any form, by print, photo print, microfilm, or any other means, without written permission from Damen Shipyards Group