



CONTAINER FEEDER 1100 OPEN TOP

STANDARD

PICTURE OF SIMILAR VESSEL

GENERAL

Basic functions	Container Ship
Classification	DNV GL ✳ 100 A5, Container Ship ✳ MC, AUT, hatch coverless

DIMENSIONS

Length overall	148,80 m
Length b.p.p.	139,70 m
Beam moulded	25,50 m
Depth moulded	12,00 m
Draft design	8,50 m
Deadweight	12.500 t
Tonnage measurement	11.100 GT

TANK CAPACITIES

Ballast water	6.500 m ³
Fuel oil (HFO)	600 m ³
Fuel oil (MGO)	150 m ³
Potable water	250 m ³
Sewage	100 m ³
Lubrication oil	35 m ³

HOLDS

Hold 1 (LxB)	28,00 m x 21,20 m
Hold 2 (LxB)	30,40 m x 21,20 m
Hold 3 (LxB)	32,00 m x 21,20 m

CONTAINERS

	20'	30' / 40' / 45'
Tank top cargo hold 1/2/3	478	176
Upper deck	720	345
Total	1,198	521

Reefer connections	200 pcs
--------------------	---------

PERFORMANCES

Speed, at d= 8,50 m	15,0 kn
90% MCR approx.	

PROPULSION MANOEUVRING SYSTEM

Main engine	Diesel, 6.000 kW at 500 rpm
Gearbox	Reduction type
Stern tube	Oil lubricated
Propeller	Controllable pitch, 5.300 mm
Steering gear	Electric-hydraulic
Rudder	Spade type
Bow thruster	Electric, controllable pitch, 1.000 kW

ELECTRICAL EQUIPMENT

Generator set(s)	2x Diesel, each approx. 720 kW 1x Shaft, approx. 2.150 kW 1x Diesel, emergency, approx. 100 kW
Shore supply	1x 440V, 125A, 50 m cable

DECK LAY-OUT

Winch(es)	2x Electric-hydraulic anchor/mooring, with 1x rope drum and 1x warping head 2x Electric mooring, with 1x rope drum and 1x warping head
Lifesaving	3x Life rafts 1x Rescue boat 1x Freefall life boat

SECONDARY SHIP SYSTEMS

Compressor(s)	2x Starting air
Separator(s)	2x Fuel oil 2x Lubrication oil 1x Bilge water acc. Marpol 1x Ballast Water Treatment Unit
Pump(s)	2x General Service 1x Emergency firefighting 2x Fuel oil transfer
Firefighting system	CO ₂ for engine room
Ventilation	Holds as per dangerous goods

ACCOMMODATION

Crew	15 persons + 4 persons SUEZ crew, with heating, ventilation and air-conditioning
------	--

NAUTICAL AND COMMUNICATION EQUIPMENT

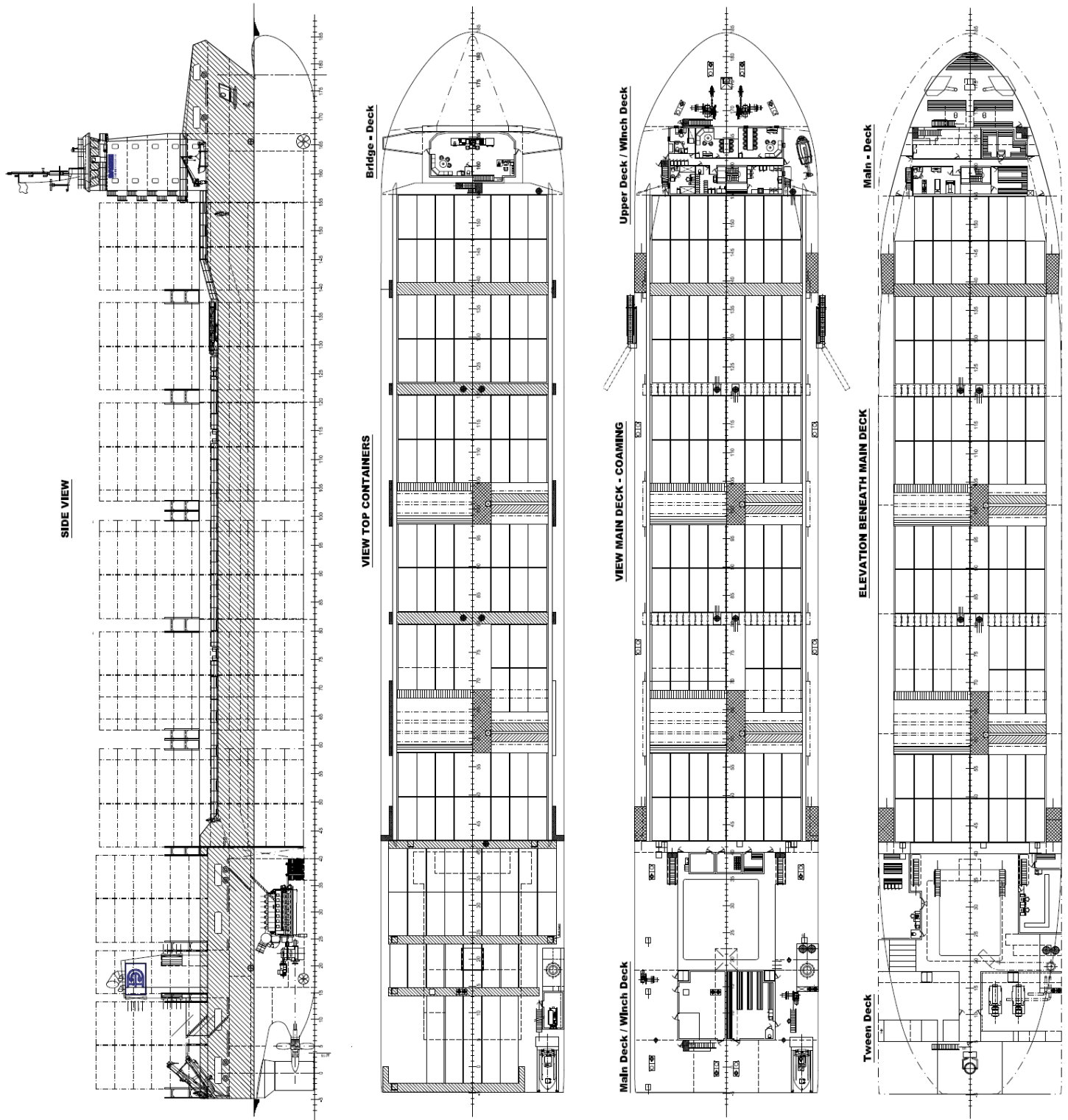
Radio telephone set	According to GMDSS for area A3
---------------------	--------------------------------

SPECIAL EQUIPMENT - OPTIONS

Finnish-Swedish Ice Class 1A
Inwatersurvey
Main engine suitable for LNG
100% gas generators
Selective Catalytic Reduction
Scrubber
Anti-heeling system
Stern thruster

CONTAINER FEEDER 1100 OPEN TOP

STANDARD



DAMEN

DAMEN SHIPYARDS GROUP

Avelingen-West 20
4202 MS Gorinchem
The Netherlands

P.O. Box 1
4200 AA Gorinchem
The Netherlands

phone +31 (0)183 63 99 22
fax +31 (0)183 63 21 89

info@damen.com
www.damen.com

© No part of the leaflet may be reproduced in any form, by print, photo print, microfilm, or any other means, without written permission from Damen Shipyards Group