



DAMEN COMBI FREIGHTER 1900 STANDARD

GENERAL

| | |
|-----------------|---|
| Basic functions | Transporting of dry bulk, steel coils, general cargo and containers in cargo holds and on deck |
| Classification | Lloyd's Register of Shipping ✱ 100 A1, Container Ship, IWS, Li, ShipRight (SDA, FDA, CM, ACS(B)), BoxMax (V, W), ECO (BWT, IHM, EAL, SEEMP, EEDI1) ✱ LMC, UMS, LFPF (GF), NAV1, Strengthened for heavy cargo 20 t/m ² according to loading pattern, Equipped for dangerous cargo according to SOLAS II-2 regulation 19 (excluding VII) |

DIMENSIONS

| | | |
|---------------------|--------|----|
| Length o.a. | 159,99 | m |
| Length b.p.p. | 152,34 | m |
| Beam mld. | 23,70 | m |
| Depth to main deck | 11,95 | m |
| Draught (design) | 8,41 | m |
| M.C.R. Main engine | 7.880 | kW |
| Deadweight (design) | 19.000 | t |

CAPACITIES

| | | |
|---------------------------|---------|----------------|
| Hold (box shaped) approx. | 27.002 | m ³ |
| | 953.567 | cft |
| Fuel oil (HFO), approx. | 1,080 | m ³ |
| Fuel oil (MGO), approx. | 195 | m ³ |
| Potable water, approx. | 130 | m ³ |
| Lubrication oil, approx. | 20 | m ³ |
| Dirty oil, approx. | 10 | m ³ |
| Sewage approx. | 50 | m ³ |
| Dirty oil, approx. | 10 | m ³ |
| Sludge, approx. | 20 | m ³ |
| Cool water drain, approx. | 4 | m ³ |

| | | |
|--------------------------|-------|-----|
| Containers (20'x8'x8'6") | | |
| In hold | 530 | TEU |
| On deck | 665 | TEU |
| Total | 1,185 | TEU |

PERFORMANCES (APPROX.)

| | | |
|---|------|----|
| Speed at 7,98 m draught, 90% MCR and 250 kW shaft generator | 14,9 | kn |
|---|------|----|

HATCHCOVERS

Hatches of the hydraulic folding type with closed underside
Dimensions hold (B x H): 20,20 x 12,23 m

ACCOMMODATION

For a crew of 15 persons, with heating, ventilation and air conditioning

PROPULSION

- 1 Diesel engine, MAK 8M 43, output 8.000 kW at 500 rpm
- 1 Controllable pitch propeller
- 1 Reduction gearbox with PTO and shaft generator
- 1 Oil lubricated stern tube

EQUIPMENT

- 1 Electric/hydraulic steering gear, Rotary Vane type
- 1 Rudder, flap type
- 1 Electrically driven bow thruster unit, approx. 900 kW
- 2 Moveable grain bulkheads

DECKMACHINERY AND EQUIPMENT

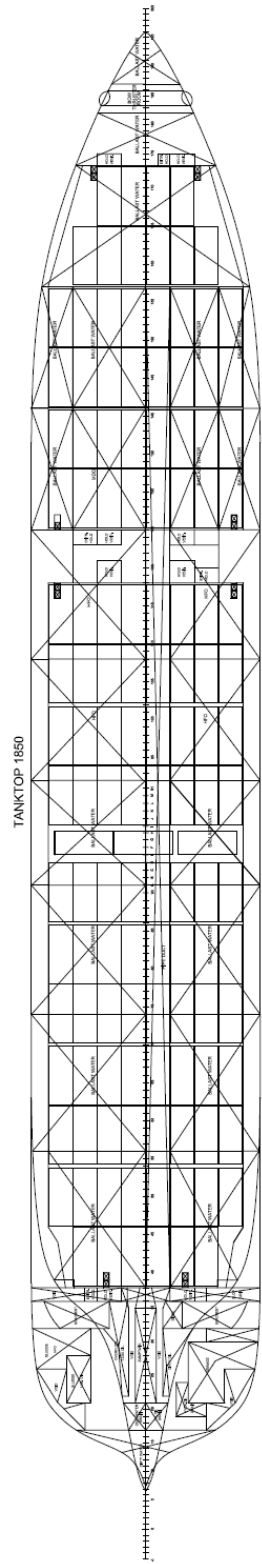
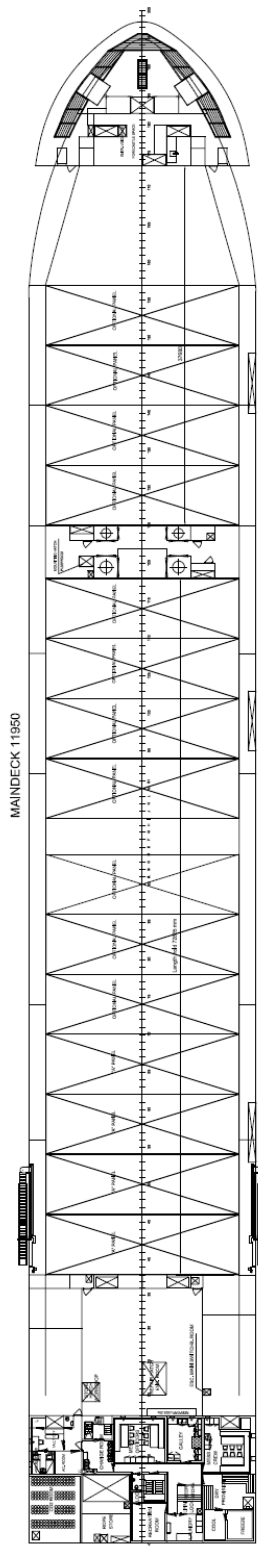
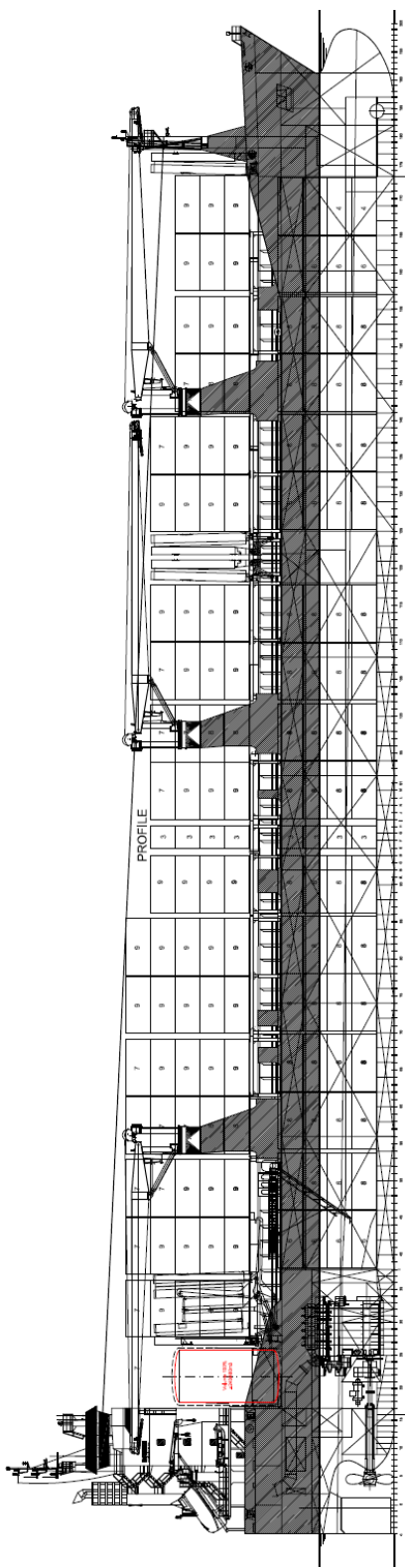
- 2 Electrical-hydraulic anchor/mooring winches with each one warping head and one rope drums on forecastle deck
- 2 Electric-hydraulic driven mooring winches with one rope drum and one warping head on poop deck aft
- 3 Electrical-hydraulic, wire-luffing cargo cranes
- 1 Rescue boat
- 3 Life rafts

AUXILIARY

- 2 Generator sets
- 1 Emergency generator set, 150 kW(e)
- 1 Shore connection, 230V/400V
- 2 Starting air compressors
- 1 Self-cleaning lubrication oil separator
- 1 Bilge water separator acc. Marpol
- 2 Bilge-/ballast pumps, 350 m³/hr
- 1 Emergency firefighting pump
- 1 CO₂ firefighting system for engine room and cargo hold

NAVIGATIONAL EQUIPMENT

- 1 Radio telephone set according to GMDSS for area A3



DAMEN COMBI FREIGHTER 1900

STANDARD

DAMEN

DAMEN SHIPYARDS GORINCHEM

Member of the DAMEN SHIPYARDS GROUP



Industrieterrein Avelingen West 20
4202 MS Gorinchem

P.O. Box 1
4200 AA Gorinchem
The Netherlands

phone +31 (0)183 63 99 11
fax +31 (0)183 63 21 89

info@damen.com
www.damen.com