



COMBI FREIGHTER 19000

STANDARD

PICTURE OF SIMILAR VESSEL

GENERAL

Basic functions	Transporting of general cargo, e.g. bulk, steel coils, forest products
Classification	LRoS ✕ 100 A1 ✕ LMC, UMS, ICE 1A Container cargoes Heavy cargo up to 20 t/m ² Dangerous cargo to SOLAS II-2 regulation 19 (excluding I and VII)

DIMENSIONS

Length overall	159,99 m
Length b.p.p.	152,34 m
Beam moulded	23,70 m
Depth moulded	11,95 m
Draft design	8,35 m
Deadweight	19.000 t
Tonnage measurement	14.200 GT

TANK CAPACITIES (APPR.)

Ballast water	7.200 m ³
Fuel oil (HFO)	1.080 m ³
Fuel oil (MGO)	200 m ³
Potable water	130 m ³
Sewage	50 m ³
Lubrication oil	20 m ³
Dirty oil	15 m ³

HOLDS

Hold 1 fore (box shaped)	8.900 m ³ 314.300 cft
Hold 2 aft (box shaped)	18.050 m ³ 637.400 cft
Dimensions hold 1 (LxBxH)	37,68 x 20,20/12,60 x 12,28 (m)
Dimensions hold 2 (LxBxH)	72,83 x 20,20 x 12,28 (m)
Grain bulkhead	2x Moveable, 25 stowage positions

CONTAINERS

In hold	530 TEU
On deck	696 TEU
Total	1.226 TEU

PERFORMANCES

Speed, at d= 8,35 m 100% MCR approx.	15,0 kn
---	---------

PROPULSION SYSTEM

Main engines	Diesel (HFO), 7.860 kW at 129 rpm
Gearbox	Tunnel type
Stern tube	Oil lubricated
Propeller	Controllable pitch, 5.100 mm
Steering gear	Electric-hydraulic
Rudder	Balance type
Bow thruster	Electric, controllable pitch, 750 kW

ELECTRICAL EQUIPMENT

Generator set	1x Shaft, 1.875 kVA - 50 Hz 2x Diesel, 781 kVA - 50 Hz 1x Diesel emergency, 330 kVA - 50 Hz
Shore supply	1x 230V/400V, 125A, 50 m cable

DECK LAY-OUT

Winch(es)	2x Electric-hydraulic anchor mooring, with 1x single drum and 1x warping head 2x Electric-hydraulic mooring aft, with 1x single drum and 1x warping head
Crane(s)	3x Electric-hydraulic, cargo handling type 40 t/26 m - 32 t/34 m
Hatches	Folding type
Lifesaving	3x Life rafts 1x Rescue boat 1x Freefall life boat

SECONDARY SHIP SYSTEMS

Compressor(s)	2x Starting air
Separator(s)	2x Fuel oil 1x Lubrication oil 1x Bilge water acc. Marpol
Pump(s)	1x Ballast Water Treatment unit 2x General service 1x Emergency firefighting
Firefighting system	CO ₂ for engine room and cargo hold
Ventilation	Holds minimum 6 air changes per hour

ACCOMMODATION

Crew	14 persons with heating, ventilation and air-conditioning
------	---

NAUTICAL AND COMMUNICATION EQUIPMENT

Radio telephone set	According to GMDSS for area A3
---------------------	--------------------------------

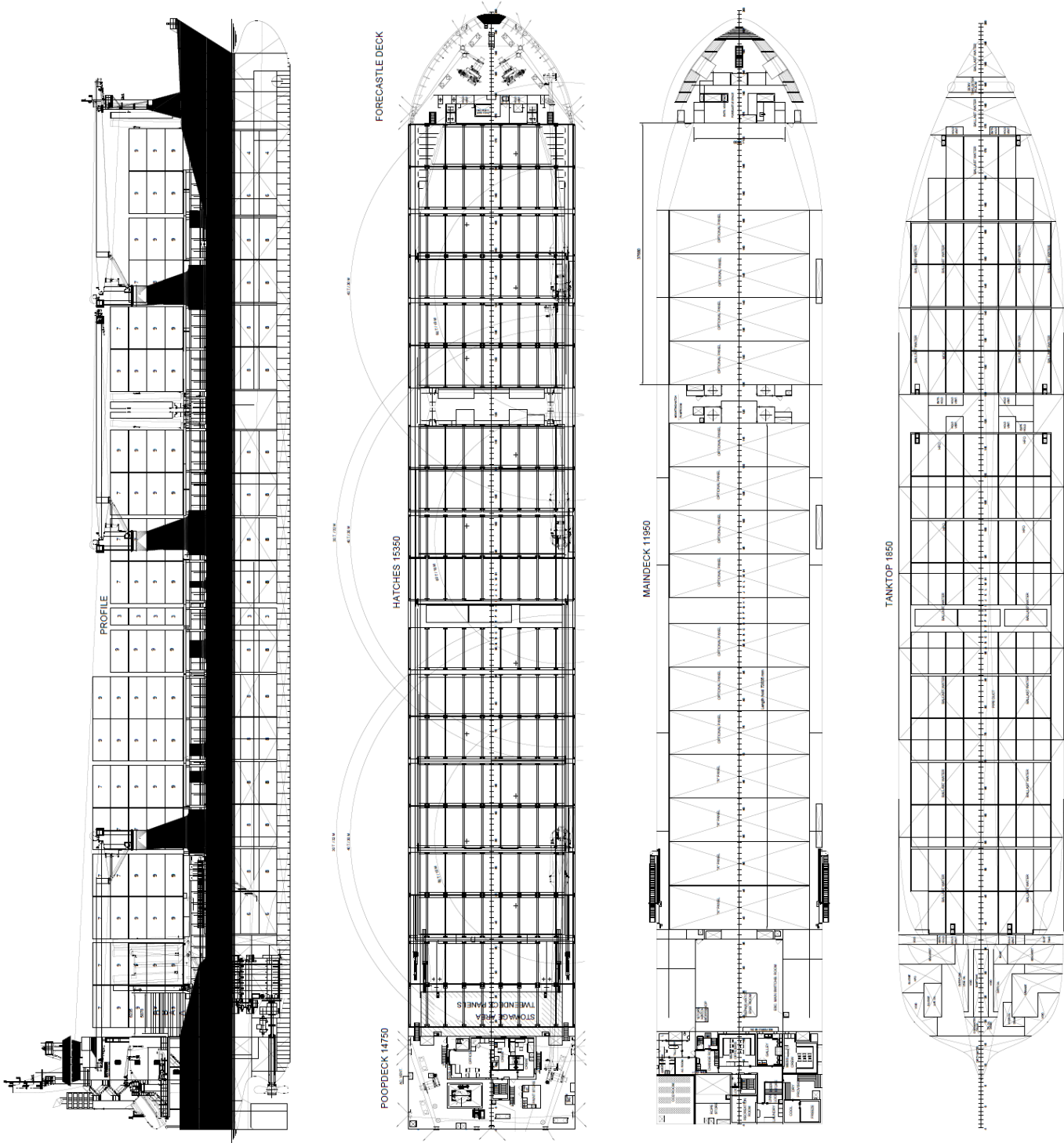
SPECIAL EQUIPMENT - OPTIONS

St. Lawrence seaway	
Inwatersurvey	
Tweendeck panels, full coverage of the hold	
Main engine suitable for LNG	
Selective catalytic reduction	
Scrubber	

DAMEN

COMBI FREIGHTER 19000

STANDARD



DAMEN SHIPYARDS GROUP

Avelingen-West 20
4202 MS Gorinchem
The Netherlands

P.O. Box 1
4200 AA Gorinchem
The Netherlands

phone +31 (0)183 63 99 22
fax +31 (0)183 63 21 89

info@damen.com
www.damen.com

© No part of the leaflet may be reproduced in any form, by print, photo print, microfilm, or any other means, without written permission from Damen Shipyards Group