



# COMBI FREIGHTER 9200

## STANDARD

### PICTURE OF SIMILAR VESSEL

#### GENERAL

Basic functions	Transporting of general cargo, e.g. bulk, steel coils, forest products
Classification	LRoS $\approx$ 100 A1 $\approx$ LMC, UMS Container cargoes Heavy cargo up to 17 t/m <sup>2</sup> Dangerous cargo to SOLAS II-2 regulation 19 (excluding I and VII)

#### DIMENSIONS

Length overall	130,92 m
Length b.p.p.	124,39 m
Beam moulded	15,90 m
Depth moulded	8,80 m
Draft design	7,05 m
Deadweight	9.200 t
Tonnage measurement	6.101 GT

#### TANK CAPACITIES (APPR.)

Ballast water	3.405 m <sup>3</sup>
Fuel oil	490 m <sup>3</sup>
Potable water	50 m <sup>3</sup>
Sewage	50 m <sup>3</sup>
Lubrication oil	10 m <sup>3</sup>
Dirty oil	10 m <sup>3</sup>

#### HOLDS

Hold 1 fore (box shaped)	2.190 m <sup>3</sup> 77.385 cft
Hold 2 aft (box shaped)	10.222 m <sup>3</sup> 360.940 cft
Dimensions hold 1 (LxBxH)	7,86 x 13,20/11,31 x 7,0 x 10,05 (m)
Dimensions hold 2 (LxBxH)	76,68 x 13,20 x 9,70 (m)
Grain bulkhead	2x Moveable, 11 stowage positions

#### CONTAINERS

In hold	207 TEU
On deck	214 TEU
Total	421 TEU

#### PERFORMANCES

Speed, at d= 7,05 m	13,3 kn
100% MCR approx.	

#### PROPULSION SYSTEM

Main engines	Diesel (MGO), 3.000 kW at 750 rpm
Gearbox	Reduction type
Stern tube	Oil lubricated
Propeller	Controllable pitch, 4.250 mm
Steering gear	Electric-hydraulic
Rudder	Spade type
Bow thruster	Electric, fixed pitch, 400 kW

#### ELECTRICAL EQUIPMENT

Generator set	1x Shaft, 585 kVA - 50 Hz 2x Diesel, 438 kVA - 50 Hz 1x Diesel emergency, 120 kVA - 50 Hz
Shore supply	1x 230V/400V, 60A, 50 m cable

#### DECK LAY-OUT

Winch(es)	2x Electric-hydraulic anchor mooring, with 1x single drum and 1x warping head 2x Electric-hydraulic mooring aft, with 1x single drum and 1x warping head
Crane(s)	2x Electric-hydraulic, cargo handling type 60 t/16 m - 34 t/28 m
Hatches	1x Electric-hydraulic, hatch cover gantry type
Lifesaving	3x Life rafts 1x Rescue boat 1x Freefall life boat

#### SECONDARY SHIP SYSTEMS

Compressor(s)	2x Starting air
Separator(s)	1x Fuel oil 1x Lubrication oil 1x Bilge water acc. Marpol
Pump(s)	1x Ballast Water Treatment unit 2x General service 1x Emergency firefighting
Firefighting system	CO <sub>2</sub> for engine room and cargo hold
Ventilation	Holds minimum 6 air changes per hour

#### ACCOMMODATION

Crew	14 persons with heating, ventilation and air-conditioning
------	---

#### NAUTICAL AND COMMUNICATION EQUIPMENT

Radio telephone set	According to GMDSS for area A3
---------------------	--------------------------------

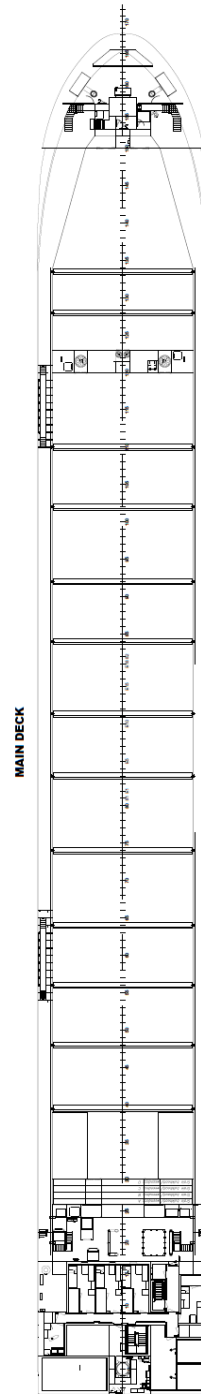
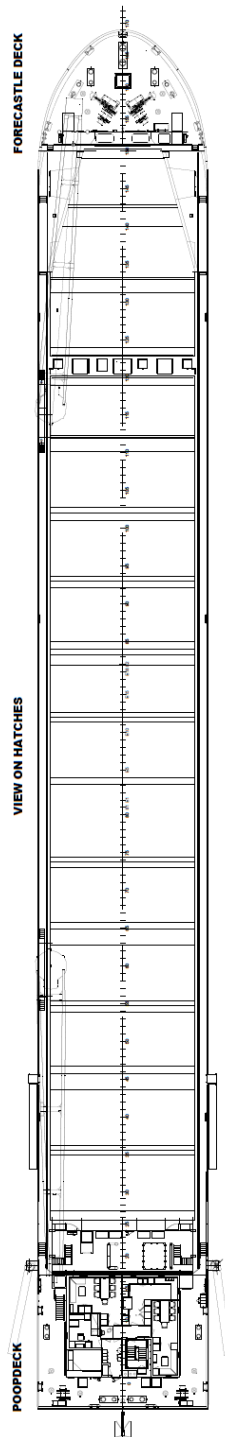
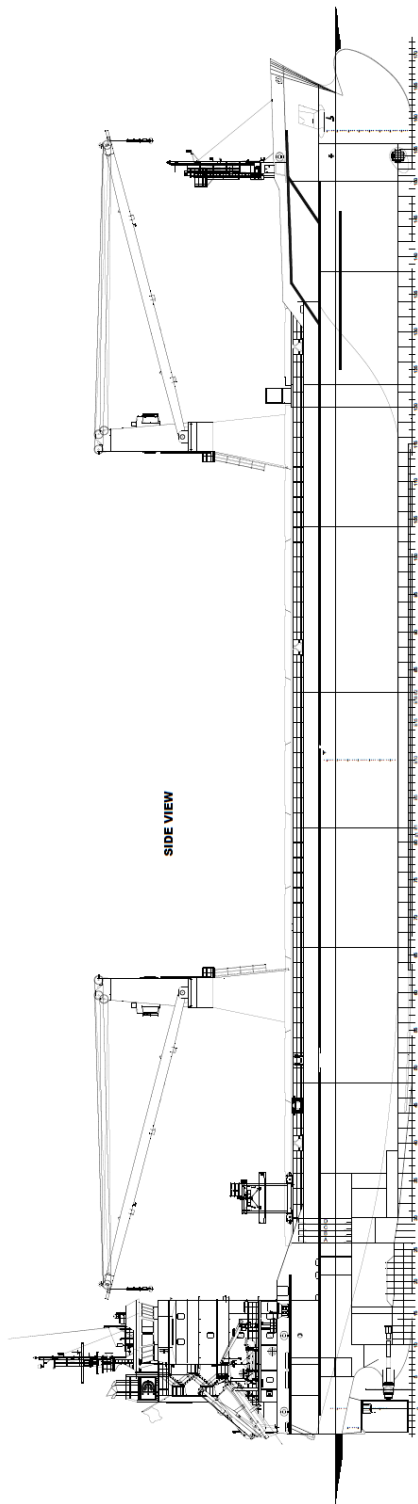
#### SPECIAL EQUIPMENT - OPTIONS

Finnish-Swedish Ice Class 1B
Inwatersurvey
Loading aground
Tweendeck panels, full coverage of the hold
Main engine suitable for heavy fuel
Main engine suitable for LNG
Selective catalytic reduction
Scrubber

# DAMEN

# COMBI FREIGHTER 9200

## STANDARD



# DAMEN

DAMEN SHIPYARDS GROUP

Avelingen-West 20  
4202 MS Gorinchem  
The Netherlands

P.O. Box 1  
4200 AA Gorinchem  
The Netherlands

phone +31 (0)183 63 99 22  
fax +31 (0)183 63 21 89

info@damen.com  
[www.damen.com](http://www.damen.com)

© No part of the leaflet may be reproduced in any form, by print, photo print, microfilm, or any other means, without written permission from Damen Shipyards Group