



# DAMEN COMBI FREIGHTER 8200

## STANDARD

### GENERAL

Basic functions	Transport of bulk, steel coils, containers, steel and forest products, general cargo
Classification	Lloyd's Register ✱ 100A1, Strengthened for heavy cargo 17 t/m <sup>2</sup> according to loading pattern. Descriptive note: Cargo regularly discharged by grab. ✱ LMC, UMS, descriptive note SCM. Finnish-Swedish Ice Class to Regulation 2010 ICE1A. Equipped for dangerous cargo according to the SOLAS regulation 19-II-2, (excluding class VII class I in forward part of hold optional). Green Passport

### DIMENSIONS

Length o.a.	118,14	m
Length b.p.p.	112,29	m
Beam mld.	15,90	m
Depth	8,80	m
Draft	7,20	m
Deadweight, approx.	8.100	t

### TANK CAPACITIES

Fuel oil (IFO 380)	491	m <sup>3</sup>
Fuel oil (GO)	65	m <sup>3</sup>
Fresh water	52	m <sup>3</sup>
Ballast water	2.946	m <sup>3</sup>

### CARGO CAPACITIES

Cargo hold 1 (box shaped)	2.190	m <sup>3</sup>
Cargo hold 2 (box shaped)	8.605	m <sup>3</sup>

Containers, in hold	177	TEU
Containers, on hatches	183	TEU
Total container capacity	360	TEU

Stack loads in hold	75t/20' & 75t/40'
Stack loads on hatches	20t/20' & 30t/40'

### PERFORMANCES (APPROX.)

Speed at d=7,15 m and an engine output of 2.970kW	13,4	kn
---	------	----

### HATCHCOVERS, GRAINBULKHEADS & TWEENDECKS

- 13 Pontoon type cargo hold hatches
- 1 Hatch cover gantry crane
- 2 Moveable grain bulkheads, 11 positions, also used as tweendeck in one position in height. Handled by the hatch cover crane
- Tweendeck positions at 3 levels

### PROPULSION SYSTEM

Main engine, MAK 6 M32-C, output 2.970 kW at 600 rpm  
 Controllable pitch propeller  
 Reduction gearbox with PTO  
 Oil lubricated stern tube

### DECK LAY-OUT AND EQUIPMENT

- 2 Cargo handling cranes, wire luffing type, 60 ton/14 m
- 2 Bow anchor winches, each with one warping head
- 2 Mooring winches aft ship, each with one warping head
- Bow thruster, E-driven, fixed pitch, 400 kW
- Electric hydraulic steering gear
- Rudder, spade type
- 1 Free fall life boat
- 1 Rescue boat with davit
- Electric driven hold ventilation
- Lashing eyes in hold and small bollards on outside of coaming

### AUXILIARY EQUIPMENT

- 1 Shaft generator, 585 kVA – 50 Hz
- 2 Diesel generator sets, 438 kVA – 50Hz
- 1 Emergency generator set, 120 kVA, 400 V-50 Hz
- 1 Exhaust gas economiser
- 1 Bilge water separator, acc. to Marpol reg.
- 2 Starting air systems
- 1 Fresh water pressure set
- 1 CO<sub>2</sub> system for engine room and cargo holds
- Separator for HFO, GO and LO system
- HFO Booster/treatment unit

### NAVIGATIONAL EQUIPMENT

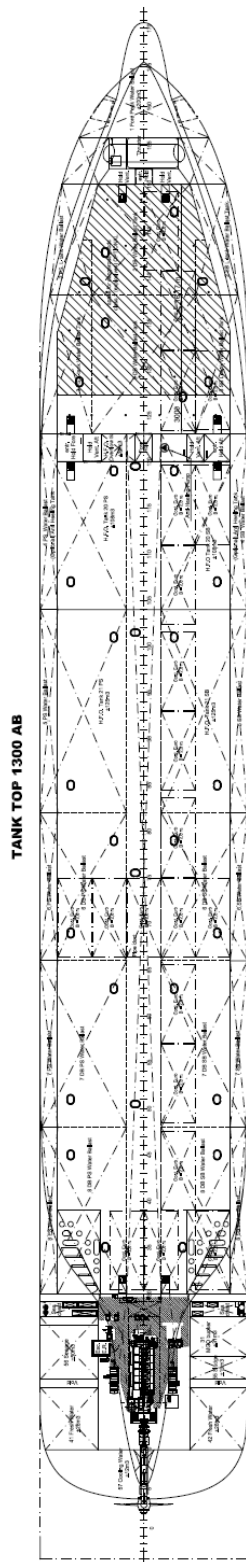
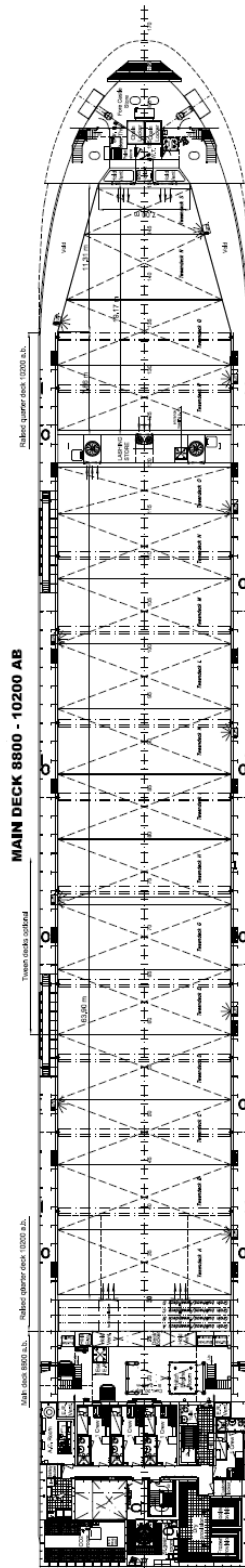
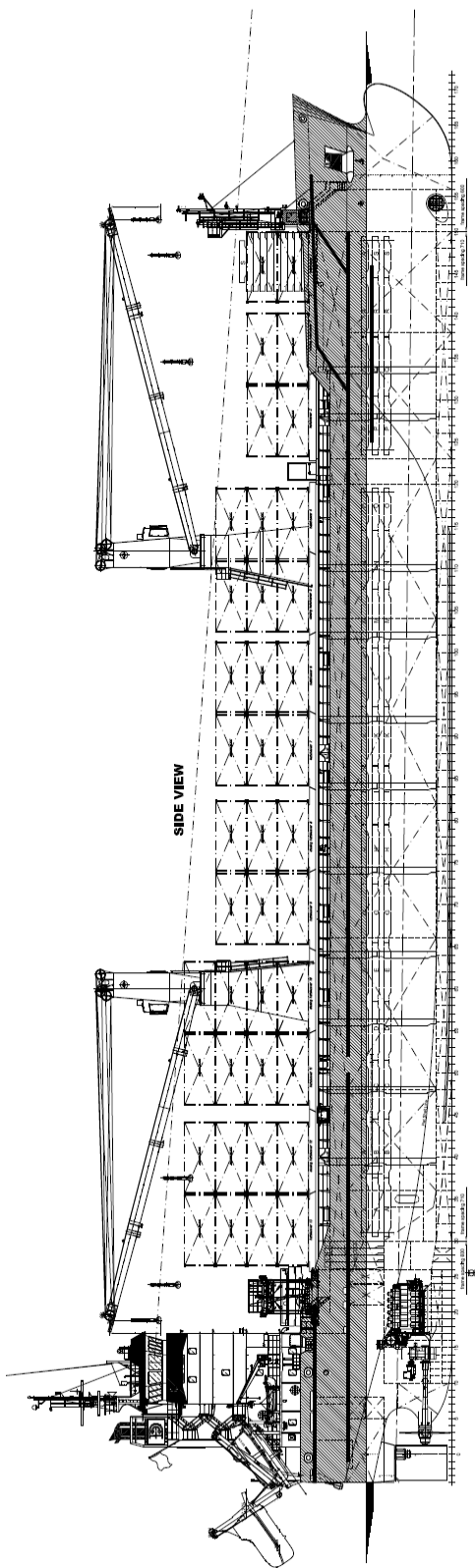
Radio equipment according GMDSS area A3

### ACCOMMODATION

For a crew of 14 persons, with heating, ventilation and air-conditioning

### OPTIONS

- 01 Ballast Water Treatment
- 02 Complementary set of tween deck panels for full coverage of the hold
- 03 SCR Exhaust Gas Treatment Unit
- 04 Main engine suitable for LNG



# DAMEN COMBI FREIGHTER 8200 STANDARD

**DAMEN**

DAMEN SHIPYARDS GORINCHEM

Member of the DAMEN SHIPYARDS GROUP



Industrieterrein Avelingen West 20  
4202 MS Gorinchem

P.O. Box 1  
4200 AA Gorinchem  
The Netherlands

phone +31 (0)183 63 99 11  
fax +31 (0)183 63 21 89

info@damen.com  
www.damen.com

Rev. 13 juni 2016

Registered at the Chamber of Commerce, no. 23036357, under the name BV Scheepswerf Damen Gorinchem.  
All our offers are without engagement unless stated otherwise.  
All activities carried out in accordance with the VNSI General Yard Conditions (Netherlands Shipbuilding Industry Association).