



DAMEN COMBI FREIGHTER[®] 8200

"M.V. TIDE NAVIGATOR"

GENERAL

YARD NUMBER	9422
DELIVERY DATE	February 2011
BASIC FUNCTIONS	Transport of bulk, steel coils, containers, forest products, general cargo, etc.
CLASSIFICATION	Lloyds Register ✕ 100 A1, ✕ LMC, UMS, SCM Equipped for dangerous goods according to SOLAS reg. 54 II2, excl. Class I and VII. Strengthened for heavy cargo up to 15 t/m ² Ice 1A acc. Swedish-Finnish Regs 2002
IMO NO.	9526083

DIMENSIONS

LENGTH O.A.	118.14	m
LENGTH B.P.P.	115.70	m
BEAM MLD.	15.90	m
DEPTH	8.80	m
BALLAST DRAFT	4.60	m
SUMMERDRAFT	7.20	m
DEADWEIGHT	8.268	ton
GROSS TONNAGE	5.425	ton

CAPACITIES

HOLD CAPACITIES	10.510	m ³ (371.155 cuft)
HFO (IFO 380)	497	m ³
GAS OIL	36	m ³
LUB.OIL CLEAN	34	m ³
DIRTY OIL	10	m ³
SLUDGE	19	m ³
SEWAGE	52	m ³
POTABLE WATER	52	m ³
BALLAST WATER	3.028	m ³

CONTAINER CAP. IN HOLD	171	TEU
CONTAINER CAP. ON DECK	165	TEU
TOTAL NUMBER	336	TEU

PERFORMANCES

Trial speed at max. draft and 2.970 kW output: 13.6 knots

NAUTICAL AND COMMUNICATION EQUIPMENT

Radio equipment is according to GMDSS for area A3

PROPULSION SYSTEM

MAIN ENGINE	1x MAK, type 9M 25 C
OUTPUT	2.970 kW at 750 rpm
PROPELLER	1x CPP, 4250 mm
BOW THRUSTER	FPP, 300kW, electrically driven

HATCHES & TWEENDECK

Weatherdeck hatches pontoon type, tweendecks pontoon type, two positions, operated by gantry crane and cargo cranes.

AUXILIARY EQUIPMENT

3 diesel generator sets 280kW each
1 shaft generator, 435 kVA
1 emergency generator set 120kVA
2 starting air compressors
2 HFO separators
1 LO separator
1 booster unit
2 fuel oil trim pump
1 bilge water separator acc. to Marpol Regulations
2 general service pumps
1 fire fighting pump
1 CO₂ fire fighting system for the engine room and holds.

DECK LAY-OUT AND EQUIPMENT

Cargo cranes 2x40 ton at 24m reach / 32 ton at 28m
Anti heeling system
Steering gear type balance rudder, rotary vane gear
Container fittings in tank top and on hatch covers
Lashing eyes in hold and outside of coaming
Hold ventilation: 105.000 m³/hrs
Fresh water generator of 2m³/ 24 hours

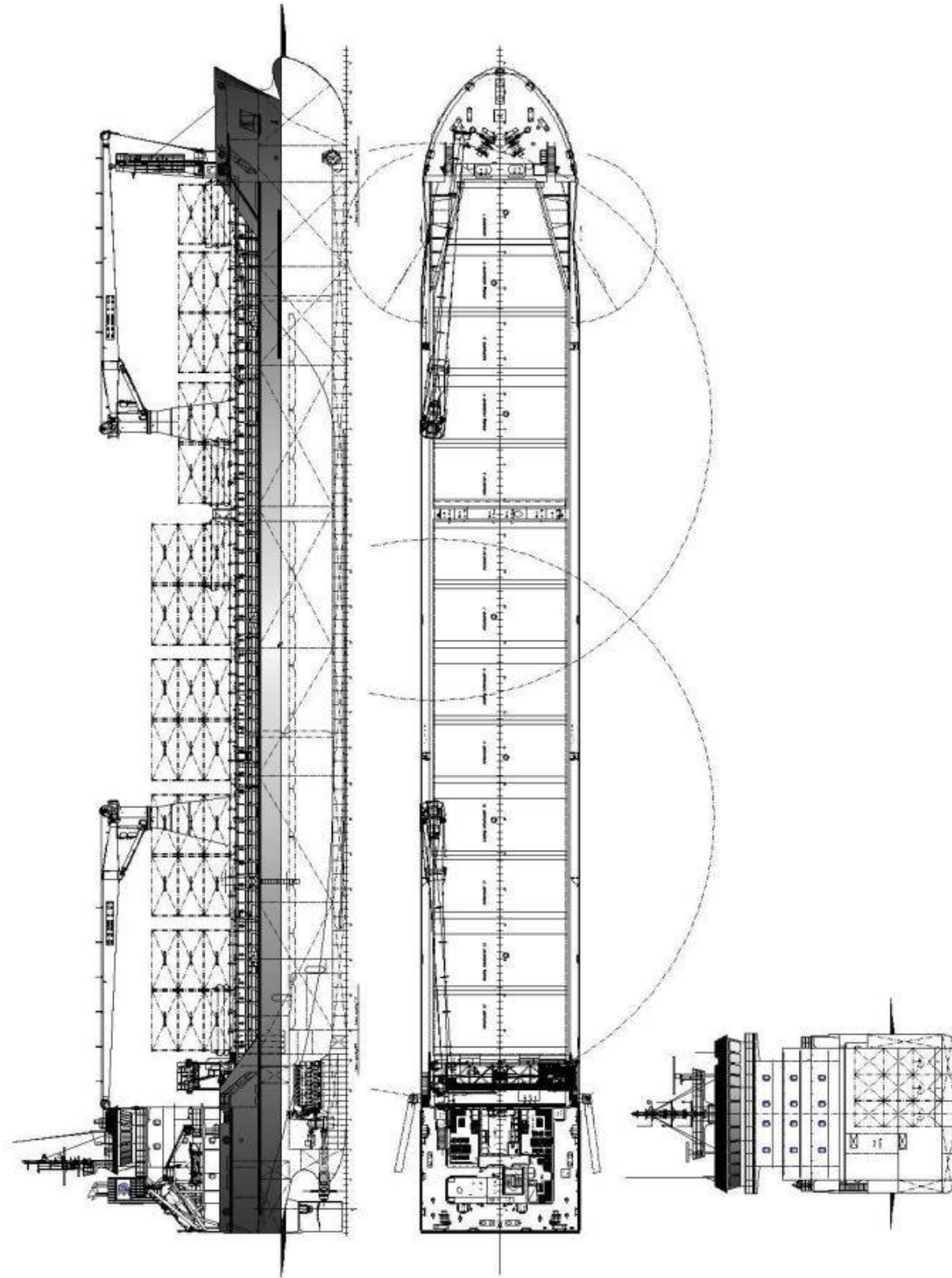
ACCOMMODATION

For captain, officers and crew for a total of 11 persons with heating, ventilation and air-conditioning.

MANAGING OWNER

ForestWave Navigation, The Netherlands

DAMEN



DAMEN COMBI FREIGHTER[®] 8200

"M.V. TIDE NAVIGATOR"

DAMEN

DAMEN SHIPYARDS BERGUM

Member of the DAMEN SHIPYARDS GROUP



Damsingel 4 (Industrieterrein Zuid)
9262 NC Suameer
The Netherlands

P.O. Box 7
9250 AA Bergum

phone +31 (0)511 46 72 22
fax +31 (0)511 46 42 59

info@damen-bergum.nl
www.damen-bergum.nl