



COMBI FREIGHTER 5000

STANDARD

PICTURE OF SIMILAR VESSEL

GENERAL

Basic functions	Transporting of general cargo, e.g. bulk, steel coils, forest products
Classification	LRoS \approx 100 A1 *IWS \approx LMC, UMS BMTS*, IHM, SCM Container cargoes Heavy cargo up to 15 t/m ² Dangerous cargo to SOLAS II-2 regulation 19 (excluding I and VII)

DIMENSIONS

Length overall	86.41 m
Length b.p.p.	84.56 m
Beam moulded	15.20 m
Depth moulded	7.25 m
Draft design	6.45 m
Deadweight	5,010 t
Tonnage measurement	2,998 GT

TANK CAPACITIES (APPR.)

Ballast water	1,450 m ³
Fuel oil	450 m ³
Potable water	45 m ³
Sewage	15 m ³
Lubrication oil	10 m ³
Dirty oil	10 m ³

HOLDS

Hold (box shaped)	6,200 m ³ 219,000 cuft
Dimensions hold (LxBxH)	60.35 x 12.60 x 8.70 (m)
Grain bulkhead	2x Moveable, 10 stowage positions

CONTAINERS

In hold	120 TEU
On deck	45 TEU
Total	165 TEU

PERFORMANCES

Speed, at design draft	
100% MCR approx.	11.6 kn

PROPULSION SYSTEM

Main engines	Diesel (MGO), 1,326 kW at 1,000 rpm
Gearbox	Reverse reduction type
Stern tube	Oil lubricated
Propeller	Fixed pitch, 3.2 m
Steering gear	Electric-hydraulic
Rudder	Spade type
Bow thruster	Electric, fixed pitch, 280 kW

ELECTRICAL EQUIPMENT

Generator set	1x Diesel, 398 kVA - 50 Hz 1x Diesel, 135 kVA - 50 Hz 1x Diesel emergency, 88 kVA - 50 Hz
Shore supply	1x 230V/400V, 85 A, 50 m cable

DECK LAY-OUT

Winch(es)	1x Electric-hydraulic anchor/mooring, with 1x single drum and 2x warping heads
Hatches	1x Electric-hydraulic, hatch cover gantry type
Lifesaving	2x Life rafts 1x Rescue boat

SECONDARY SHIP SYSTEMS

Compressor(s)	2x Starting air
Separator(s)	1x Fuel oil separator filter 1x Lubrication oil separator filter 1x Bilge water acc. Marpol 1x Ballast Water Treatment unit 1x General service 1x Emergency firefighting
Pump(s)	CO ₂ for engine room and cargo hold Holds minimum 6 air changes per hour
Firefighting system	
Ventilation	

ACCOMMODATION

Crew	9 persons with heating, ventilation and air-conditioning
------	--

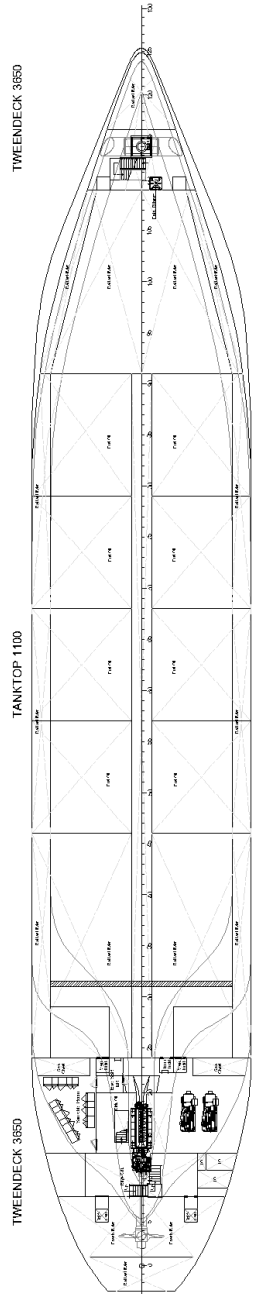
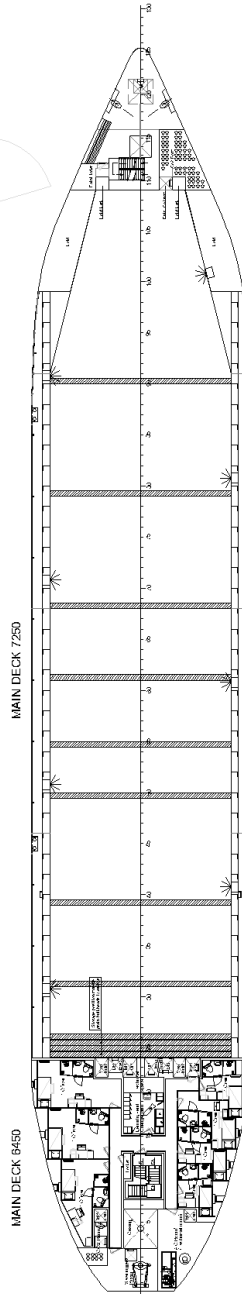
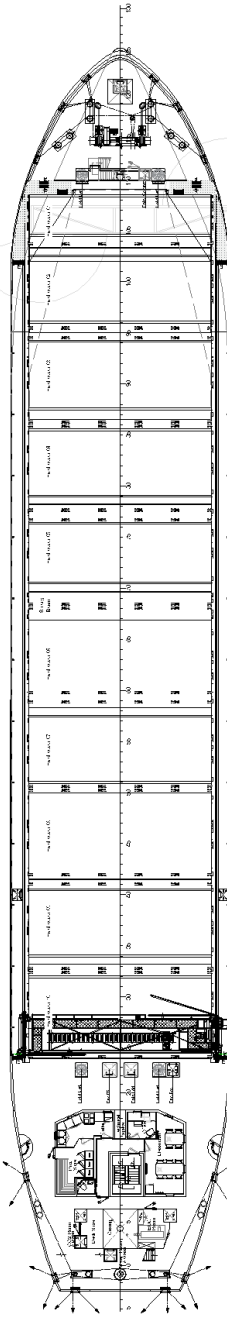
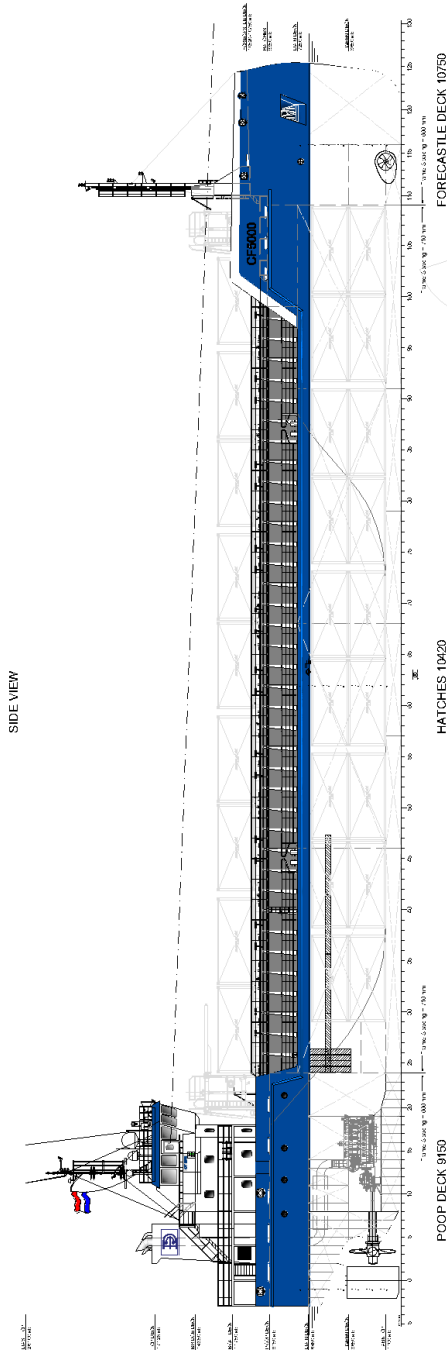
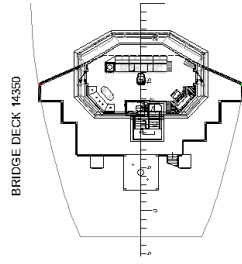
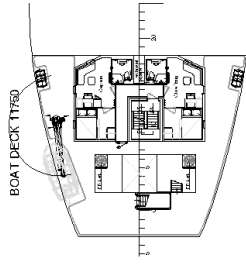
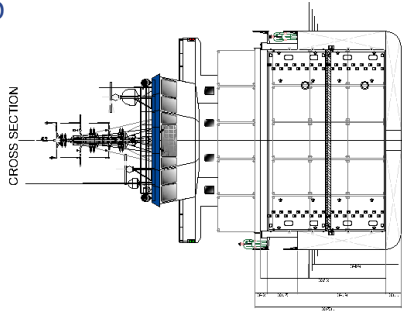
NAUTICAL AND COMMUNICATION EQUIPMENT

Radio telephone set	According to GMDSS for area A3
---------------------	--------------------------------

OPTIONS

Controllable pitch propeller in combination with shaft alternator
Frequency driven PTO generator
Finnish-Swedish Ice Class (1A, 1B, 1C)
Loading aground
Main engine suitable for heavy fuel oil
Main engine suitable for LNG
Scrubber
Tweendeck panels, full coverage of the hold

COMBI FREIGHTER 5000 STANDARD



DAMEN SHIPYARDS GROUP

Avelingen-West 20
4202 MS Gorinchem
The Netherlands

P.O. Box 1
4200 AA Gorinchem
The Netherlands

phone +31 (0)183 63 99 22
fax +31 (0)183 63 21 89

info@damen.com
www.damen.com

© No part of the leaflet may be reproduced in any form, by print, photo print, microfilm, or any other means, without written permission from Damen Shipyards Group