



DAMEN COMBI FREIGHTER® 3850

"M.V. OOSTERSINGEL"

GENERAL

YARD NUMBER	9344
DELIVERY DATE	May 2001
BASIC FUNCTIONS	Transport of bulk, steel coils, containers, forest products, general cargo, etc.
CLASSIFICATION	Lloyds Register ✱ 100 A1, ✱ LMC, UMS, SCM Equipped for dangerous goods according to SOLAS reg. 54 II2, excl. Class I and VII. Strengthened for heavy cargo up to 15 t/m ²

DIMENSIONS

LENGTH O.A.	88.60	m
LENGTH B.P.P.	84.99	m
BEAM MLD.	12.50	m
DEPTH	7.00	m
BALLAST DRAFT	3.20	m
SUMMERDRAFT	5.42	m
DEADWEIGHT	3.810	ton
GROSS TONNAGE	2.545	ton

CAPACITIES

HOLD CAPACITIES	5.319	m ³ (187.838 cuft)
MDO	210.4	m ³
GAS OIL	1.9	m ³
LUB.OIL CLEAN	8.6	m ³
DIRTY OIL	4	m ³
SLUDGE	4	m ³
SEWAGE	12	m ³
POTABLE WATER	55.3	m ³
BALLAST WATER	1.380.9	m ³

CONTAINER CAP. IN HOLD	113	TEU
CONTAINER CAP. ON DECK	80	TEU
TOTAL NUMBER	193	TEU

PERFORMANCES

Trial speed at ballast draft and 1520 kW output: 12.5 knots

NAUTICAL AND COMMUNICATION EQUIPMENT

Radio equipment is according to GMDSS for area A3

PROPULSION SYSTEM

MAIN ENGINE	1x MAK, type 8M 20
OUTPUT	1520 kW at 1000 rpm
PROPELLER	1x FPP, 2600 mm
BOW THRUSTER	FPP, 220 kW

HATCHES

Weatherdeck hatches dim. approx. 62,70 x 10,10 m
Steel pontoon hatches with gantry crane

AUXILIARY EQUIPMENT

2 Diesel generator sets, Scania, each 231 kVA - 50Hz
1 Emergency/harbour generator set, Valmet, 58 kVA - 50 Hz
2 Starting air compressors
1 MDO separator
1 Lubrication Oil separator
1 Fuel oil trim pump
1 Bilge water separator, acc. to Marpol regulations
2 General service pumps, each 150 m³/hr at 1,5 bar
1 Fire fighting pump
1 Freshwater pressure set
1 Sewage treatment plant
1 CO₂ fire fighting system for engine room and cargo hold

DECK LAY-OUT AND EQUIPMENT

1 Elec. driven bow anchor winch with two warping heads
1 Elec. driven capstan aft
Rudder, fishtail type
Container fittings in tanktop and on hatch covers
Lashing eyes in hold and on outside of coaming
2 Moveable grain bulkheads with 8 stowage positions
Electrically driven hold ventilation for 6 air changes per hour

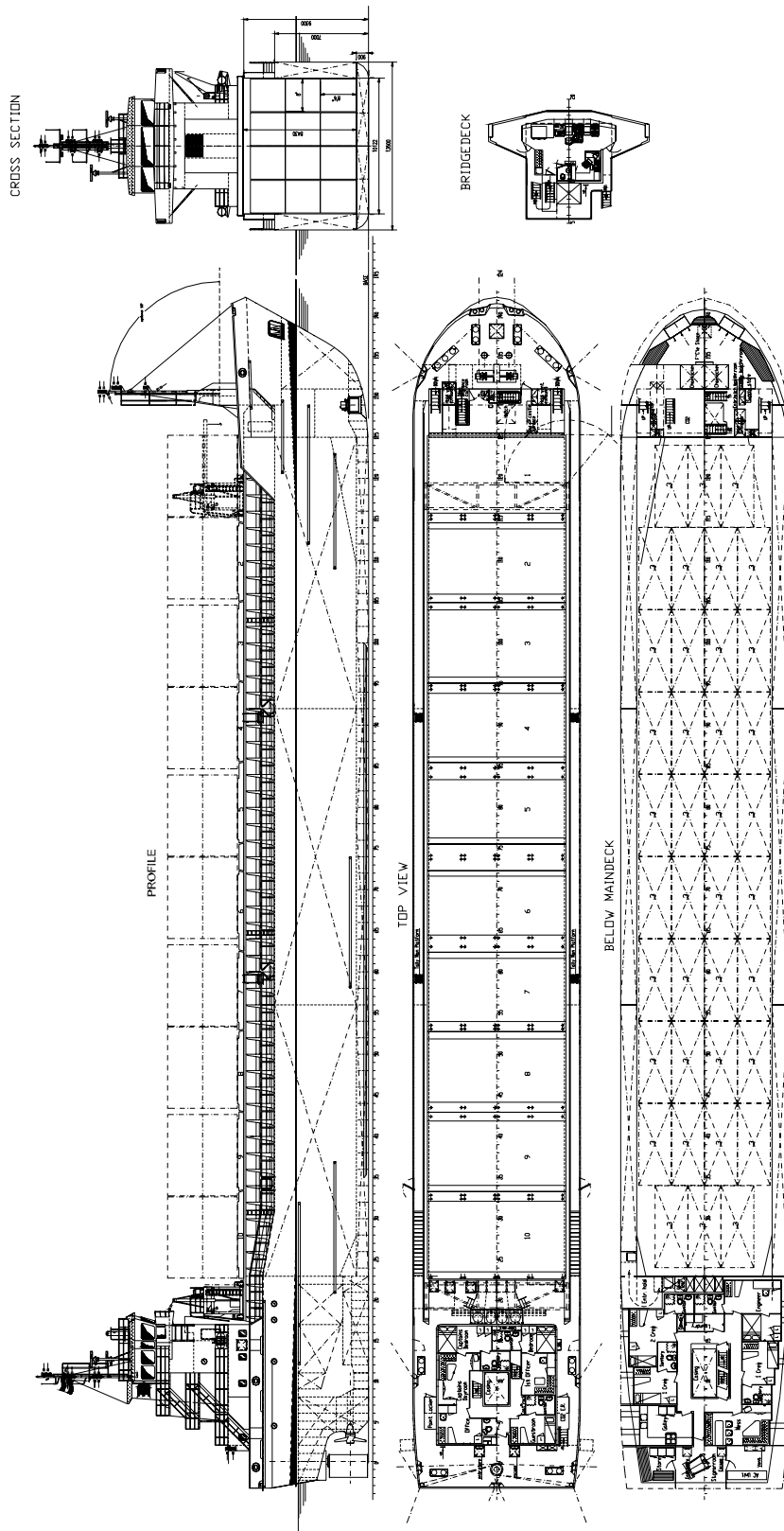
ACCOMMODATION

For captain and crew for a total of 8 persons with heating, ventilation and air-conditioning

MANAGING OWNER

C.V. ms. 'Oostersingel', Rederij Armawa

DAMEN



DAMEN COMBI FREIGHTER® 3850

"M.V. OOSTERSINGEL"

DAMEN

DAMEN SHIPYARDS BERGUM

Member of the DAMEN SHIPYARDS GROUP



Damsingel 4 (Industrierrein Zuid)
9262 NC Suameer

P.O. Box 7
9250 AA Bergum
The Netherlands

phone +31 (0)511 46 72 22
fax +31 (0)511 46 42 59

info@damen-bergum.nl
www.damen-bergum.nl