



# DAMEN COMBI FREIGHTER® 3850

## "M.V. OOSTERPOORT"

### GENERAL

YARD NUMBER	9341
DELIVERY DATE	November 2001
BASIC FUNCTIONS	Transport of bulk, steel coils, containers, forest products, general cargo, etc.
CLASSIFICATION	Lloyds Register ✱ 100 A1, ✱ LMC, UMS, SCM Equipped for dangerous goods according to SOLAS reg. 54 II2, excl. Class I and VII. Strengthened for heavy cargo up to 15 t/m <sup>2</sup>

### DIMENSIONS

LENGTH O.A.	88.60	m
LENGTH B.P.P.	84.99	m
BEAM MLD.	12.50	m
DEPTH	7.00	m
BALLAST DRAFT	3.20	m
SUMMERDRAFT	5.42	m
DEADWEIGHT	3.810	ton
GROSS TONNAGE	2.545	ton

### CAPACITIES

HOLD CAPACITIES	5.250	m <sup>3</sup> (185.400 cuft)
MDO	210.4	m <sup>3</sup>
GAS OIL	1.9	m <sup>3</sup>
LUB.OIL CLEAN	8.6	m <sup>3</sup>
DIRTY OIL	4	m <sup>3</sup>
SLUDGE	4	m <sup>3</sup>
SEWAGE	12	m <sup>3</sup>
POTABLE WATER	55.3	m <sup>3</sup>
BALLAST WATER	1.380.9	m <sup>3</sup>

CONTAINER CAP. IN HOLD	113	TEU
CONTAINER CAP. ON DECK	80	TEU
TOTAL NUMBER	193	TEU

### PERFORMANCES

Trial speed at ballast draft and 1520 kW output: 12.5 knots

### NAUTICAL AND COMMUNICATION EQUIPMENT

Radio equipment is according to GMDSS for area A3

### PROPULSION SYSTEM

MAIN ENGINE	1x MAK, type 8M 20
OUTPUT	1520 kW at 1000 rpm
PROPELLER	1x FPP, 2600 mm
BOW THRUSTER	FPP, 220 kW

### HATCHES

Weatherdeck hatches dim. approx. 62,70 x 10,10 m  
Steel pontoon hatches with gantry crane

### AUXILIARY EQUIPMENT

- 1 Diesel generator set, Scania, 324 kVA - 50Hz
- 1 Diesel generator set, Valmet, 120 kVA - 50Hz
- 1 Emergency/harbour generator set, Valmet, 58 kVA - 50 Hz
- 2 Starting air compressors
- 1 MDO separator
- 1 Lubrication Oil separator
- 1 Fuel oil trim pump
- 1 Bilge water separator, acc. to Marpol regulations
- 2 General service pumps, each 150 m<sup>3</sup>/hr at 1,5 bar
- 1 Fire fighting pump
- 1 Freshwater pressure set
- 1 Sewage treatment plant
- 1 CO<sub>2</sub> fire fighting system for engine room and cargo hold

### DECK LAY-OUT AND EQUIPMENT

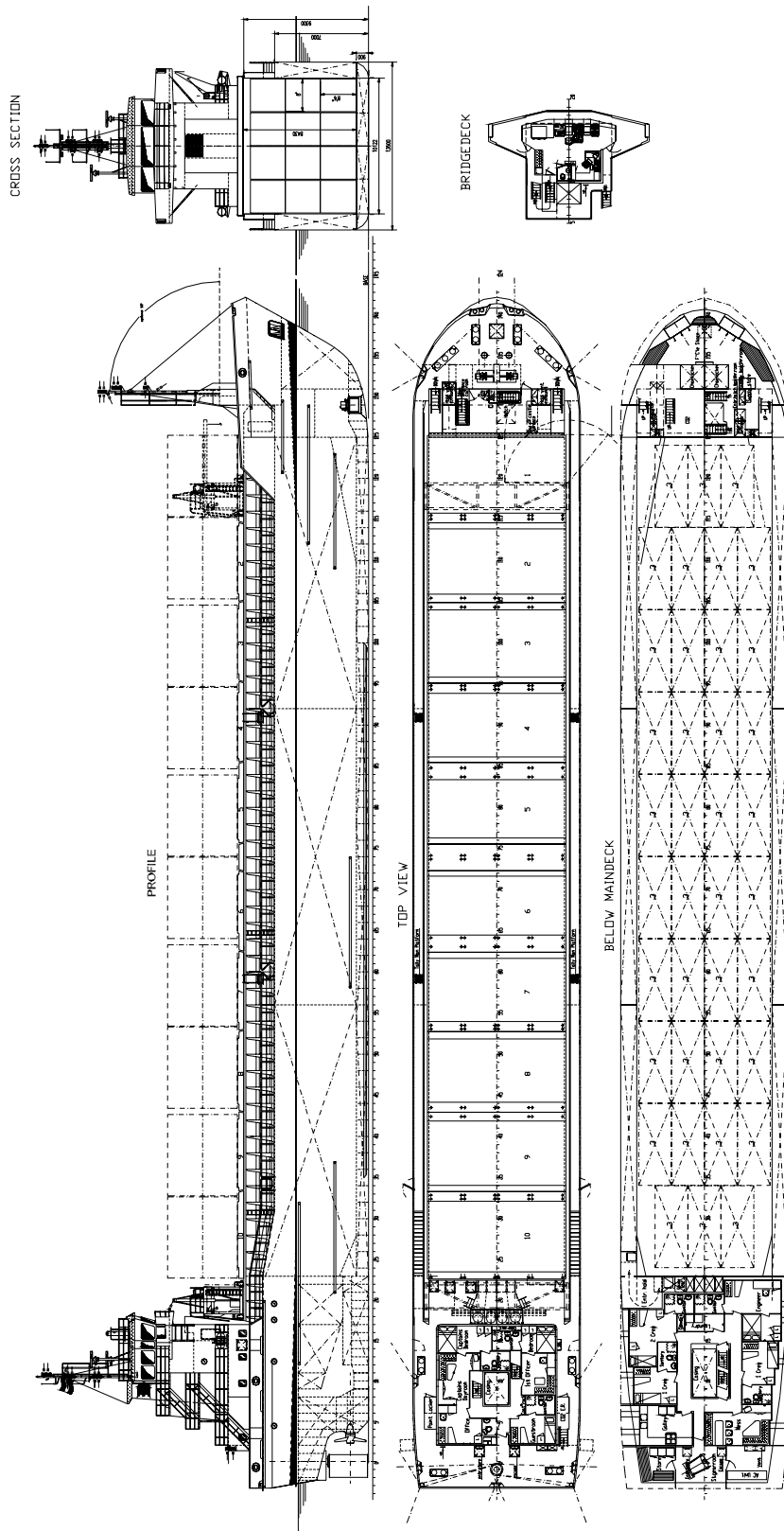
- 1 Elec. driven bow anchor winch with two warping heads
- 1 Elec. driven capstan aft
- Rudder, fishtail type
- Container fittings in tanktop and on hatch covers
- Lashing eyes in hold and on outside of coaming
- 2 Moveable grain bulkheads with 8 stowage positions
- Electrically driven hold ventilation for 6 air changes per hour

### ACCOMMODATION

For captain and crew for a total of 8 persons with heating, ventilation and air-conditioning

### MANAGING OWNER

C.V. ms. 'Oosterpoort',  
Rederij Armawa



# DAMEN COMBI FREIGHTER® 3850

"M.V. OOSTERPOORT"

**DAMEN**

DAMEN SHIPYARDS BERGUM

Member of the DAMEN SHIPYARDS GROUP



Damsingel 4 (Industrierrein Zuid)  
9262 NC Suameer

P.O. Box 7  
9250 AA Bergum  
The Netherlands

phone +31 (0)511 46 72 22  
fax +31 (0)511 46 42 59

info@damen-bergum.nl  
www.damen-bergum.nl