



# DAMEN COMBI FREIGHTER 1400 STANDARD

## GENERAL

Basic functions	Transport of bulk, steel coils, containers, steel and forest products, general cargo
Classification	Lloyd's Register of Shipping ✱ 100 A1, ✱ LMC, UMS, Strengthened for heavy cargo up to 20 t/m <sup>2</sup> , Equipped for dangerous goods acc. SOLAS Reg. 19-II-2, excluding explosives and nuclear cargoes

## DIMENSIONS

Length o.a.	146,25	m
Length b.p.p.	139,99	m
Beam mld.	20,10	m
Depth	11,45	m
Draft	8,25	m
Deadweight	14.000	t

## TANK CAPACITIES

Fuel oil (IFO 380)	737	m <sup>3</sup>
Fuel oil (GO)	98	m <sup>3</sup>
Fresh water	120	m <sup>3</sup>
Ballast water	6.405	m <sup>3</sup>

## CARGO CAPACITIES

Cargo hold 1 (box shaped)	7.870	m <sup>3</sup>
	278.750	cft
Cargo hold 2 (box shaped)	9.056	m <sup>3</sup>
	318.986	cft

Containers, in hold	264	TEU
Containers, on hatches	225	TEU
Total container capacity	489	TEU

Stack loads in hold	100t/20' & 135t/40'
Stack loads on hatches	50t/20' & 65t/40'
Homogeneous load	489 TEU at 14t

## PERFORMANCES (APPROX.)

Trial speed at maximum draft, 90% MCR	13,5	kn
---------------------------------------	------	----

## HATCHCOVERS, GRAINBULKHEADS & TWEENDECKS

- Hydraulic folding type cargo hold hatches with closed underside (load 2t/m<sup>2</sup>)
- 2 Divisible grain bulkheads, 10 positions, also used as tweendeck in 2 levels in height (option)

## PROPULSION SYSTEM

Main engine, MAK 8 M32-C, output 4.000 kW at 600 rpm  
 Controllable pitch propeller  
 Bow thruster, E-driven, fixed pitch, 600 kW  
 Steering gear, Rotary Vane type  
 Rudder, balance type

## DECK LAY-OUT AND EQUIPMENT

- 2 Cargo handling cranes, 40 ton/26 m (option 60 or 80 tons)
- 2 Bow anchor winches, each with one warping head
- 2 Mooring winches aft ship, each with one warping head
- 1 Gangway
- 1 Free fall life boat
- 1 Rescue boat with davit
- Electric driven hold ventilation, 6 changes/hr (option 15 changes)
- Lashing eyes in hold
- Bollards on outside of coaming

## AUXILIARY EQUIPMENT

- 1 Shaft generator, 1.000 kVA, 400 V-50 Hz
- 2 Diesel generator sets, each 438 kVA, 400 V-50 Hz
- 1 Emergency generator set, 177 kVA, 400 V-50 Hz
- 1 Bilge water separator, acc. to Marpol reg.
- 2 Starting air systems
- 1 Fresh water pressure set
- 1 CO<sub>2</sub> system for engine room and cargo holds
- 3 Separators for HFO-GO-LO

## NAVIGATIONAL EQUIPMENT

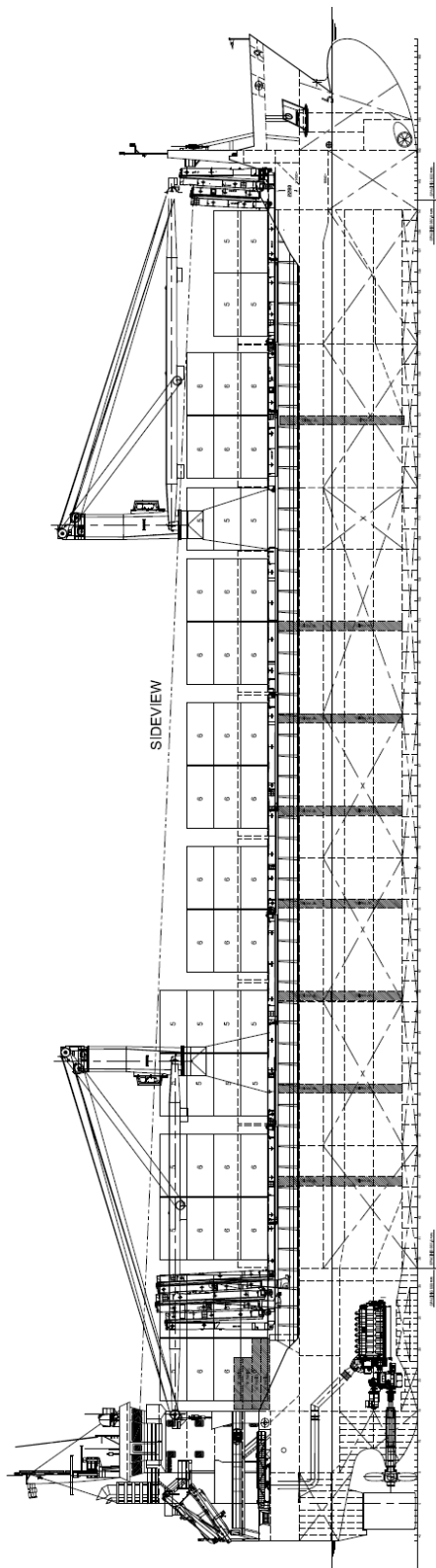
Radio equipment according GMDSS area A3

## ACCOMMODATION

For a crew of 18 persons, with heating, ventilation and air-conditioning

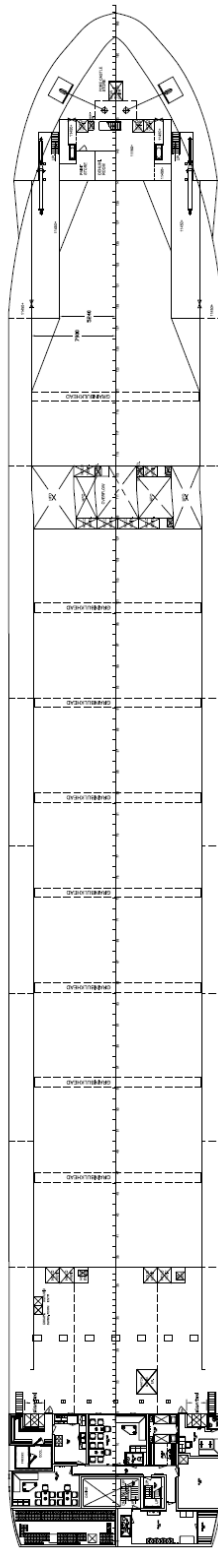
## OPTIONS

- 01 Main engine, MAK 6 M43-C, output 6.000 kW/600 rpm, speed 15,8 kn.
- 02 Ballast Water Treatment
- 03 Main engine running on LNG
- 04 Two cargo handling cranes 60 t each
- 05 Two cargo handling cranes 80 t each
- 06 Main engine running on LNG

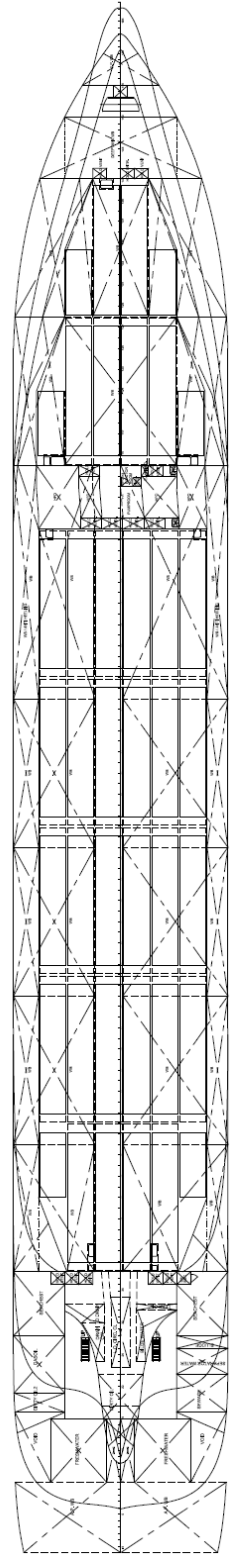


MAINDECK 11450

MAINDECK 11450



TANKTOP 1450



# DAMEN COMBI FREIGHTER 14000 STANDARD

## DAMEN

DAMEN SHIPYARDS GORINCHEM

Member of the DAMEN SHIPYARDS GROUP 

Industrieterrein Avelingen West 20  
4202 MS Gorinchem

P.O. Box 1  
4200 AA Gorinchem  
The Netherlands

phone +31 (0)183 63 99 11  
fax +31 (0)183 63 21 89

info@damen.com  
www.damen.com

Rev. 9 mei 2016

Registered at the Chamber of Commerce, no. 23036357, under the name BV Scheepswerf Damen Gorinchem.  
All our offers are without engagement unless stated otherwise.  
All activities carried out in accordance with the VNSI General Yard Conditions (Netherlands Shipbuilding Industry Association).