



COMBI FREIGHTER 11000

STANDARD

PICTURE OF SIMILAR VESSEL

GENERAL

Basic functions	Transporting of general cargo, e.g. bulk, steel coils, forest products
Classification	LRoS \approx 100 A1 \approx LMC, UMS, ICE 1A FS Container cargoes Heavy cargo up to 20 t/m ² Dangerous cargo to SOLAS II-2 regulation 19 (excluding I and VII)

DIMENSIONS

Length overall	146,23 m
Length b.p.p.	138,62 m
Beam moulded	18,25 m
Depth moulded	10,30 m
Draft design	7,40 m
Deadweight	11.000 t
Tonnage measurement	7.900 GT

TANK CAPACITIES (APPR.)

Ballast water	5.090 m ³
Fuel oil	700 m ³
Potable water	75 m ³
Sewage	35 m ³
Lubrication oil	30 m ³
Dirty oil	10 m ³

HOLDS

Hold 1 fore (box shaped)	5.370 m ³ 189.500 cft
Hold 2 aft (box shaped)	9.441 m ³ 333.400 cft
Dimensions hold 1 (LxBxH)	38,95 x 13,15 x 11,05 (m)
Dimensions hold 2 (LxBxH)	65,41 x 13,15 x 11,05 (m)
Grain bulkhead	2x Moveable, 17 stowage positions

CONTAINERS

In hold	302 TEU
On deck	<u>259 TEU</u>
Total	561 TEU

PERFORMANCES

Speed, at d= 7,40 m 100% MCR approx.	13,9 kn
---	---------

PROPULSION SYSTEM

Main engines	Diesel (MGO), 4.500 kW at 600 rpm
Gearbox	Reduction type
Stern tube	Oil lubricated
Propeller	Controllable pitch, 4.200 mm
Steering gear	Electric-hydraulic
Rudder	Balance type
Bow thruster	Electric, fixed pitch, 650 kW

ELECTRICAL EQUIPMENT

Generator set	1x Shaft, 950 kVA - 50 Hz 3x Diesel, 515 kVA - 50 Hz 1x Diesel emergency, 148 kVA - 50 Hz
Shore supply	1x 230V/400V, 1253A, 50 m cable

DECK LAY-OUT

Winch(es)	2x Electric-hydraulic anchor mooring, with 1x single drum and 1x warping head 2x Electric-hydraulic mooring aft, with 1x single drum and 1x warping head
Crane(s)	2x Electric-hydraulic, cargo handling type 40t/26 m - 32t/34 m
Hatches	1x Electric-hydraulic, hatch cover gantry type
Lifesaving	3x Life rafts 1x Rescue boat 1x Freefall life boat

SECONDARY SHIP SYSTEMS

Compressor(s)	2x Starting air
Separator(s)	1x Fuel oil 1x Lubrication oil 1x Bilge water acc. Marpol
Pump(s)	1x Ballast Water Treatment unit 2x General service 1x Emergency firefighting
Firefighting system	CO ₂ for engine room and cargo hold
Ventilation	Holds minimum 6 air changes per hour

ACCOMMODATION

Crew	17 persons with heating, ventilation and air-conditioning
------	---

NAUTICAL AND COMMUNICATION EQUIPMENT

Radio telephone set	According to GMDSS for area A3
---------------------	--------------------------------

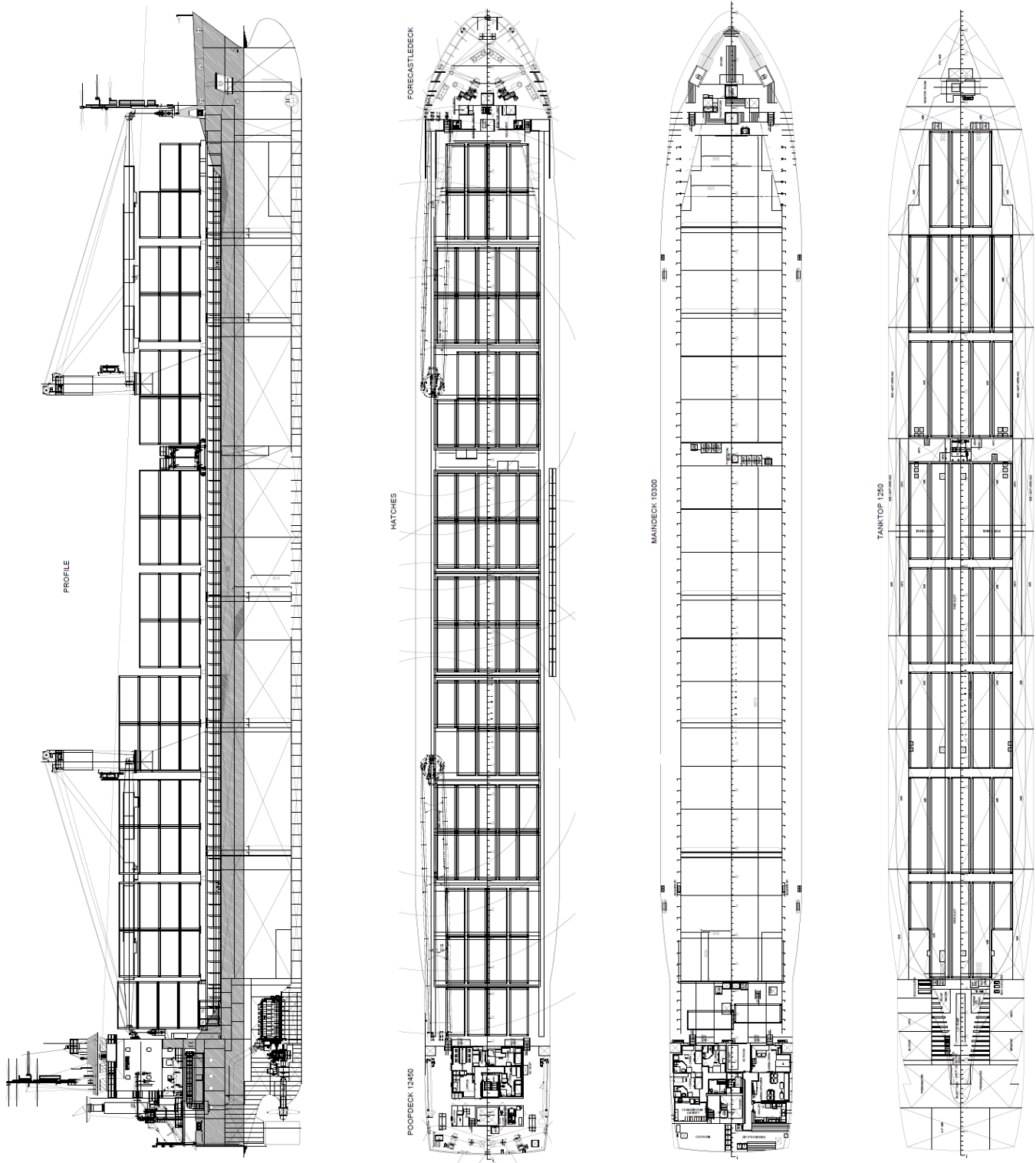
SPECIAL EQUIPMENT - OPTIONS

St. Lawrence seaway	
Inwatersurvey	
Tweendeck panels, full coverage of the hold	
Main engine suitable for heavy fuel	
Main engine suitable for LNG	
Selective catalytic reduction	
Scrubber	

DAMEN

COMBI FREIGHTER 11000

STANDARD



DAMEN

DAMEN SHIPYARDS GROUP

Avelingen-West 20
4202 MS Gorinchem
The Netherlands

P.O. Box 1
4200 AA Gorinchem
The Netherlands

phone +31 (0)183 63 99 22
fax +31 (0)183 63 21 89

info@damen.com
www.damen.com

© No part of the leaflet may be reproduced in any form, by print, photo print, microfilm, or any other means, without written permission from Damen Shipyards Group