



# DAMEN COMBI FREIGHTER 11000

## STANDARD

### GENERAL

Basic functions	Transport of bulk, steel coils, containers, steel and forest products, general cargo
Classification	Lloyd's Register of Shipping ✱ 100 A1, ✱ LMC, UMS, Strengthened for heavy cargo up to 17 t/m <sup>2</sup> , Equipped for dangerous goods acc. SOLAS Reg. 19-II-2, excluding explosives and nuclear cargoes Ice Class 1A, acc. Finnish-Swedish rules 2010

### DIMENSIONS

Length o.a.	145.63	m
Length b.p.p.	138.62	m
Beam mld.	18.25	m
Depth	10.30	m
Draft	7.40	m
Deadweight	11.000	t

### TANK CAPACITIES

Fuel oil (IFO 380)	657	m <sup>3</sup>
Fuel oil (GO)	60	m <sup>3</sup>
Fresh water	75	m <sup>3</sup>
Ballast water	5.092	m <sup>3</sup>

### CARGO CAPACITIES

Cargo hold 1 (box shaped)	5.368	m <sup>3</sup>
	190.130	cft
Cargo hold 2 (box shaped)	9.439	m <sup>3</sup>
	334.320	cft

Containers, in hold	302	TEU
Containers, on hatches	370	TEU
Total container capacity	672	TEU

Stack loads in hold	100t/20' & 140t/40'
Stack loads on hatches	28t/20' & 48t/40'
Stack loads on tweendeck	35t/20' 54t/40'

### PERFORMANCES (APPROX.)

Trial speed at maximum draft, 90% MCR	14,0	kn
---------------------------------------	------	----

### HATCHCOVERS, GRAINBULKHEADS & TWEENDECKS

- 13 Pontoon type cargo hold hatches
- 1 Hatch cover gantry crane
- 2 Divisible grain bulkheads, 10 positions, also used as tweendeck in one position in height. Handled by the hatch cover crane

### PROPULSION SYSTEM

Main engine, MAK 9 M32-C, output 4.500 kW at 600 rpm  
 Controllable pitch propeller  
 Bow thruster, E-driven, controllable pitch, 650 kW  
 Steering gear, Rotary Vane type  
 Rudder, balance type

### DECK LAY-OUT AND EQUIPMENT

2 Cargo handling cranes, 80 ton/14 m (or 32 ton at 34 m)  
 2 Bow anchor winches, each with one warping head  
 2 Mooring winches aft ship, each with one warping head  
 1 Gangway  
 1 Free fall life boat  
 1 Rescue boat with davit  
 Electric driven hold ventilation, 10 changes/hr  
 Lashing eyes in hold  
 Bollards on outside of coaming

### AUXILIARY EQUIPMENT

1 Shaft generator, 950 kVA, 400 V-50 Hz  
 2 Diesel generator sets, each 438 kVA, 400 V-50 Hz  
 1 Emergency generator set, 125 kVA, 400 V-50 Hz  
 1 Bilge water separator, acc. to Marpol reg.  
 2 Starting air systems  
 1 Fresh water pressure set  
 1 CO<sub>2</sub> system for engine room and cargo holds  
 1 FW distiller  
 1 Sewage treatment plant

### NAVIGATIONAL EQUIPMENT

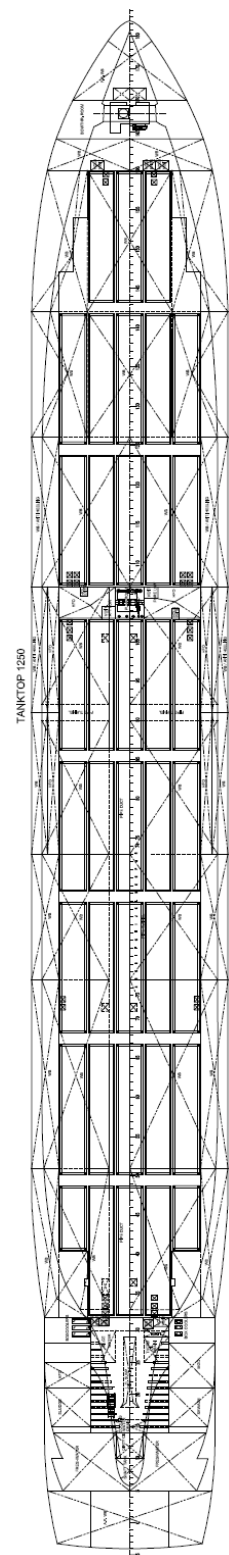
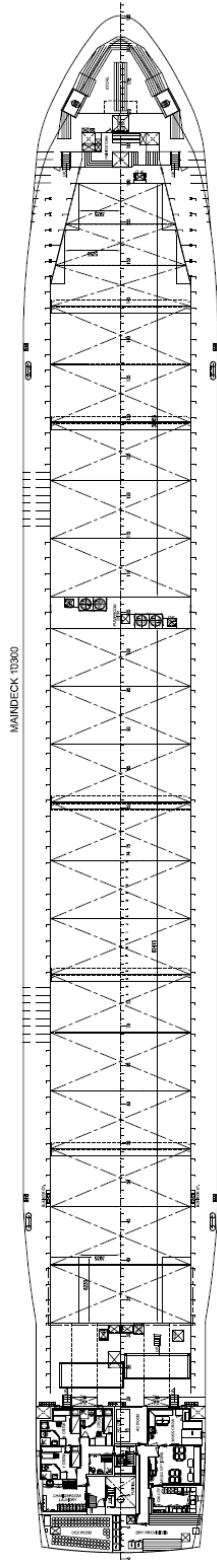
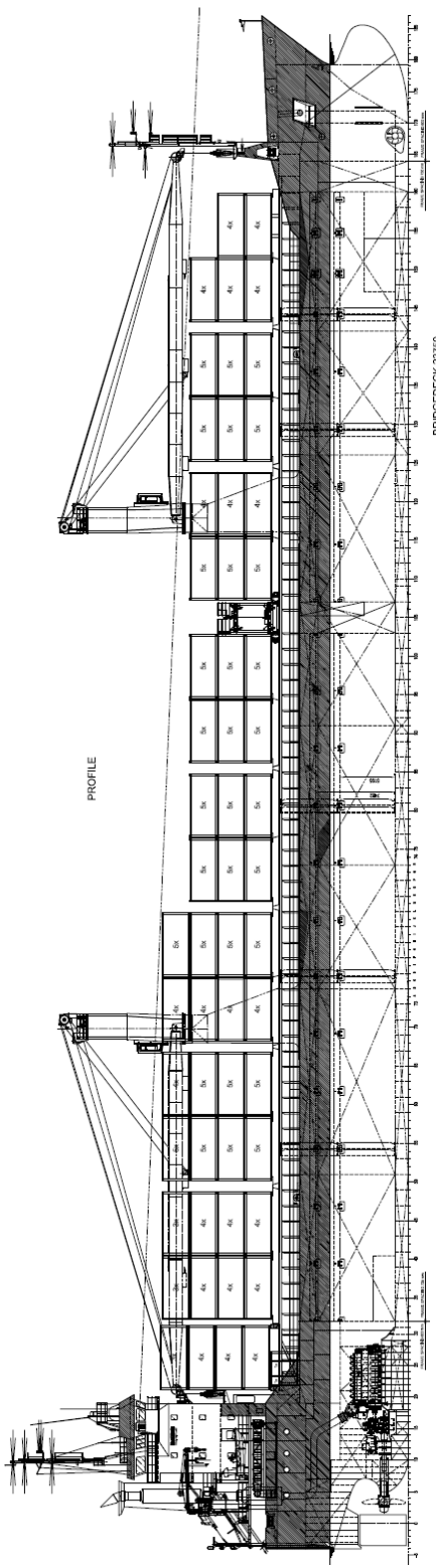
Radio equipment according GMDSS area A3

### ACCOMMODATION

For a crew of 17 persons, with heating, ventilation and air-conditioning

### OPTIONS

- 01 Ballast Water Treatment
- 02 St. Lawrence Seaway passage, Panama, Suez regulations
- 03 Main engine running on LNG
- 04 Complementary set tween deck panels for full coverage of holds
- 05 Two electric hydraulic cranes each 80T/6-14m, 32T/2,5-32/34m
- 06 Two electric hydraulic cranes each 120T/6-14m, 40T/4-32/34m
- 07 Two electric hydraulic cranes each 150T/6-16m, 60T/4-32/34m



# DAMEN COMBI FREIGHTER 11000 STANDARD

## DAMEN

DAMEN SHIPYARDS GORINCHEM

Member of the DAMEN SHIPYARDS GROUP 

Industrieterrein Avelingen West 20  
4202 MS Gorinchem

P.O. Box 1  
4200 AA Gorinchem  
The Netherlands

phone +31 (0)183 63 99 11  
fax +31 (0)183 63 21 89

info@damen.com  
www.damen.com

Rev. 2 mei 2016

Registered at the Chamber of Commerce, no. 23036357, under the name BV Scheepswerf Damen Gorinchem.  
All our offers are without engagement unless stated otherwise.  
All activities carried out in accordance with the VNSI General Yard Conditions (Netherlands Shipbuilding Industry Association).