



DAMEN COMBI FREIGHTER® 1100

"STX ALPHA"

GENERAL

YARD NUMBER	567309
DELIVERY DATE	July 2010
BASIC FUNCTIONS	Transport of containers, bulk, steel coils, forest products, general cargo
CLASSIFICATION REGULATIONS	LR +100 A1, +LMC, UMS, SCM Ice class 1A. St. Lawrence Seaway. Containers in holds and on hatches. Equipped for dangerous goods acc. to SOLAS reg. 19 II-2, excl. Class VII. Strengthened for heavy cargoes.
FLAG OWNER	Antigua and Barbuda MS Rotes Kliff GmbH & Co.KG

DIMENSIONS

LENGTH O.A.	145.63 m
LENGTH P.P.	138.62 m
BEAM MLD.	18.25 m
DEPTH MLD.	10.30 m
DRAUGHT	7.40 m
DEADWEIGHT	11000 ton
GROSS TONNAGE	7878 GT

TANK CAPACITIES

HOLD 1	5367 m ³ (= 189.534 cu.ft.)
HOLD 2	9438 m ³ (= 333.300 cu.ft.)
TOTAL HOLDS	14805 m ³ (= 522.834 cu.ft.)
HFO (RMG 35)	651 m ³
MGO (DMA)	60 m ³
LUBRICATION OIL	26 m ³
DIRTY OIL	9 m ³
SLUDGE	23 m ³
SEWAGE	23 m ³
POTABLE WATER	75 m ³
BALLAST WATER	5032 m ³
CONTAINERS IN HOLDS	302 TEU stack load 100 ton/TEU
CONTAINERS ON DECK	361 TEU stack load 28 ton/TEU
CONTAINERS TOTAL	663 TEU

PERFORMANCE

SPEED	14 kn at 7.40 m draft with 85% MCR, 150 kW PTO and no sea-margin
-------	------------------------------------------------------------------

PROPULSION SYSTEM

MAIN ENGINE	MAK 9M32
POWER	4320 kW
PROPELLER	4200 mm, 4 blades, CPP
BOW THRUSTER	650 kW, 4 blades, CPP
RUDDER	Balance type
STEERING GEAR	Rotary vane

HOLDS AND HATCH COVERS

WEATHERDECK HATCHES	Pontoon type
TWEENDECK HATCHES	20 pontoons with 2 store positions in height, uniform load 3.50 t/m ² Dimensions 38.95 m x 13.15 m
HOLD 1	Dimensions 65.41 m x 13.15 m
HOLD 2	Dimensions 65.41 m x 13.15 m
TANKTOP LOAD	18 ton/m ² uniform, max. 20 ton/ m ² locally

AUXILIARY EQUIPMENT

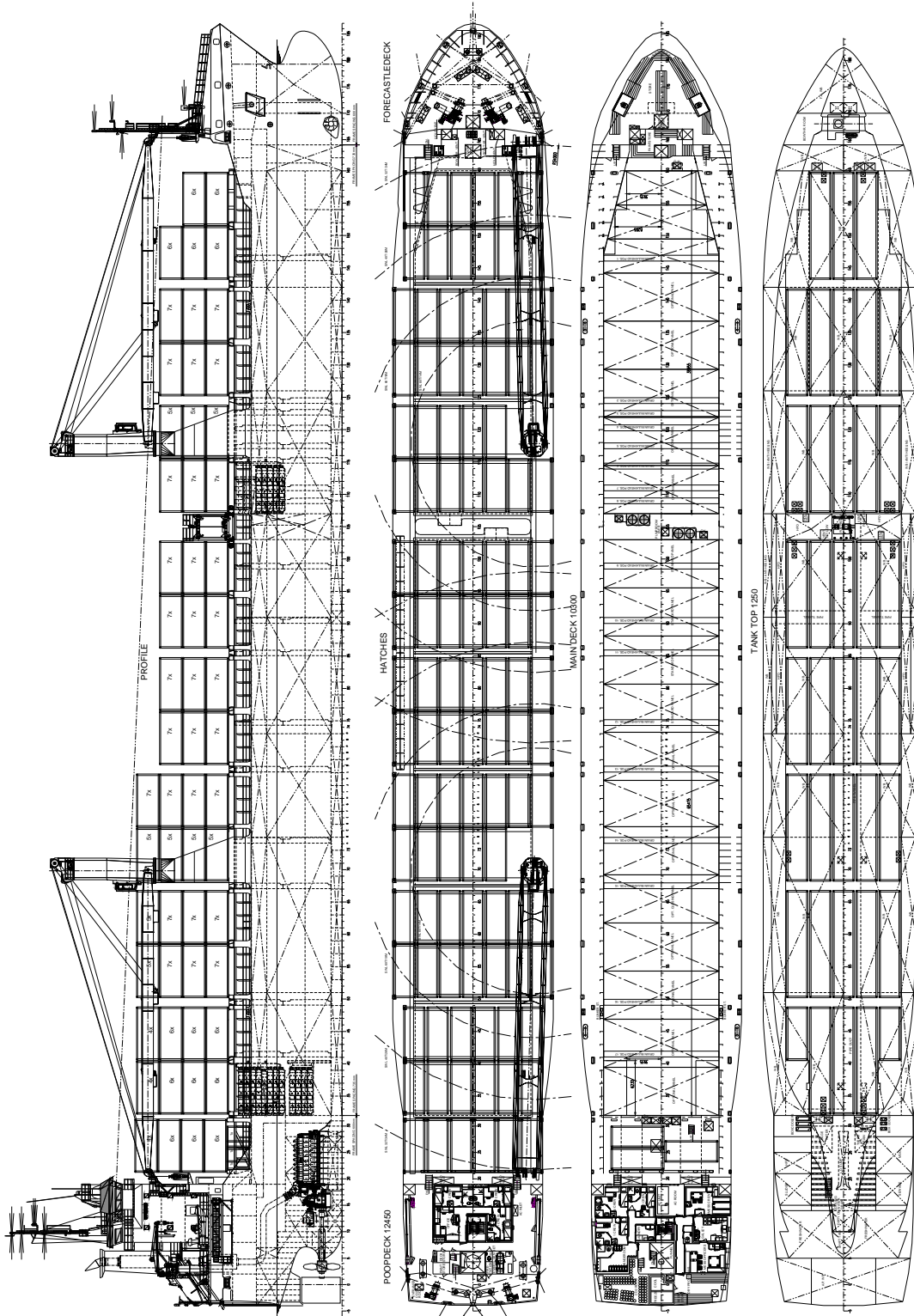
SHAFT GENERATOR	1x 950 kVA, 50 Hz
DIESEL GENERATORSETS	3x 438 kVA, 50 Hz
EMERGENCY GEN. SET	1x 120 kVA, 60 Hz
ANTI HEELING SYSTEM	1120 m ³ /hr
FIRE FIGHTING	CO ₂ system for engine room and cargo holds
FIXED WATER SPRAY SYSTEM	In hold 1 & 2

DECK LAY-OUT

ANCHOR/MOORING WINCHES	2x electro-hydraulic winches on forecastle deck, with a single drum and warping head
MOORING WINCHES	2x electro-hydraulic winches on poop deck, with a single drum and warping head
ANCHOR WINCH	1x electro-hydraulic winch on boat deck, with a single drum
CARGO CRANES	2x 80(60)40(32) ton / 14(19)26(34) m
DECK CRANE	1x for free fall boat, rescue boat and life raft
CONTAINER FITTINGS	For 20' and 40' on tanktop and hatch covers
LASHING EYES	In holds and on coaming supports
REEFER PLUGS	60 on main deck
GRAINBULKHEAD	1 existing of 2 pcs. in hold 1, with 8 store pos.
GRAINBULKHEAD	1 existing of 2 pcs. in hold 2, with 9 store pos.

ACCOMMODATION

For a crew of 14 persons with heating, ventilation and air-conditioning



DAMEN COMBI FREIGHTER® 11000

"STX ALPHA"

DAMEN

DAMEN SHIPYARDS GORINCHEM

Member of the DAMEN SHIPYARDS GROUP



Industrieterrein Avelingen West 20
4202 MS Gorinchem

P.O. Box 1
4200 AA Gorinchem
The Netherlands

phone +31 (0)183 63 99 11
fax +31 (0)183 63 21 89

info@damen.nl
www.damen.nl