



DAMEN COMBI COASTER[®] 2500

"M.V. AEGIR"

GENERAL

YARD NUMBER	9986
DELIVERY DATE	January 2001
BASIC FUNCTIONS	Sea/river transport of bulk, general cargo, etc.
CLASSIFICATION	Bureau Veritas + I 3/3 E, Cargoship Deep Sea + MACH, ICE 3, NSI

DIMENSIONS

LENGTH O.A.	82.45	m
LENGTH B.P.P.	79.17	m
BEAM MLD.	11.30	m
DEPTH	5.40	m
BALLAST DRAFT	2.75	m
SUMMERDRAFT	4.30	m
DEADWEIGHT (d.+4.30)	2.420	ton
GROSS TONNAGE	1.780	ton

CAPACITIES

HOLD CAPACITIES	3.370	m ³ (118.460 cuft)
GAS OIL	95	m ³
LUB.OIL CLEAN	4.7	m ³
SLUDGE	2.7	m ³
POTABLE WATER	38	m ³
BALLAST WATER	1.410	m ³

PERFORMANCES

Trial speed at ballast draft and 955 kW output: 10.7 knots

NAUTICAL AND COMMUNICATION EQUIPMENT

Radio equipment is according to GMDSS for area A2

PROPULSION SYSTEM

MAIN ENGINE	1x Caterpillar, type 3512 B DITA
OUTPUT	955 kW at 1600 rpm adjusted to 750 kW
PROPELLER	FPP 2000 mm with wingnozzle
BOW THRUSTER	3-directional FPP with 243 kW diesel engine

HATCHES

Pontoon hatches with gantrycrane dim. approx. 51.10 x 9.30 m.

AUXILIARY EQUIPMENT

- 2 Diesel generator sets, Valmet, each 80 kVA-50Hz
- 1 Emergency/harbour generator set, Valmet, 58 kVA-50 Hz
- 1 Working air compressor
- 1 Fuel separator
- 1 Fuel oil trim pump
- 1 Bilge water separator, acc. to Marpol regulations
- 2 Bilge/ballast pumps, each 150 m³/hr at 1,5 bar
- 1 Ejector
- 1 Fire fighting pump
- 1 Freshwater pressure set
- 1 CO₂ fire fighting system for engine room

DECK LAY-OUT AND EQUIPMENT

- 1 Hydr. driven bow anchor winch with two warping heads
- 1 Hydr. driven stern anchor winch with one warping head
- 1 Hydr. system for navigation masts
- 1 Rudder, fishtail type

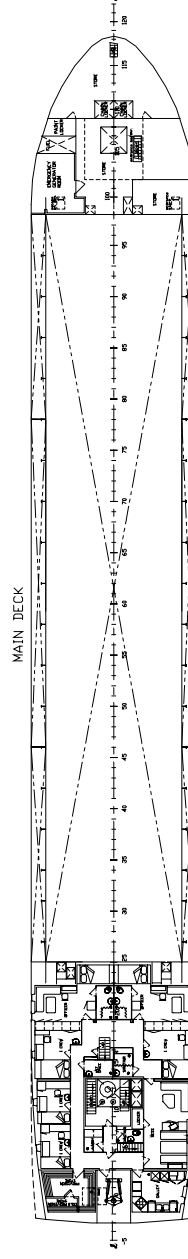
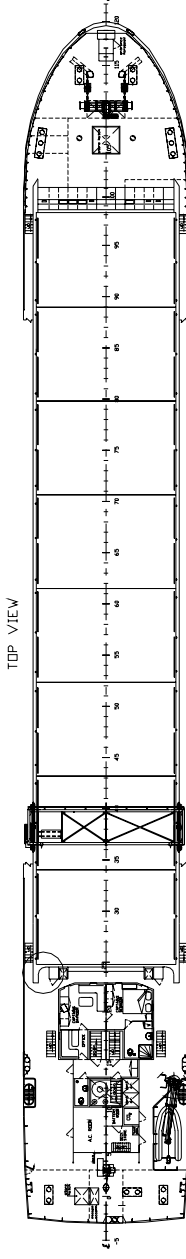
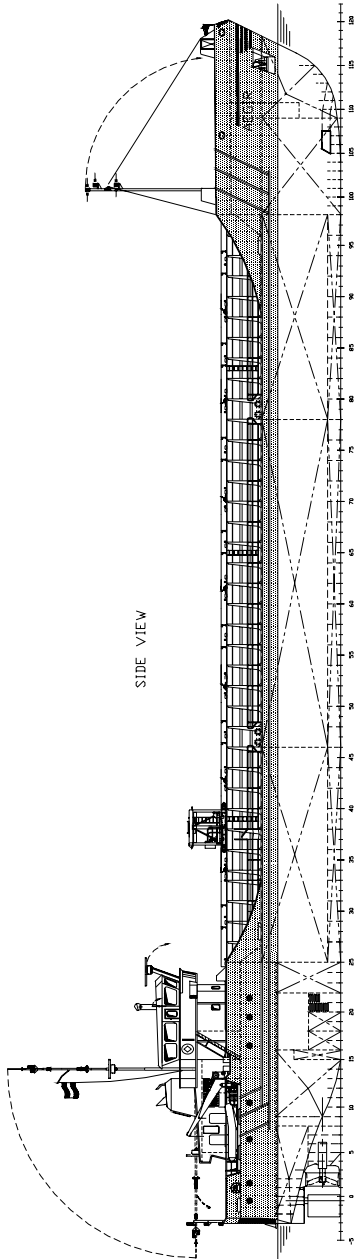
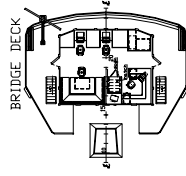
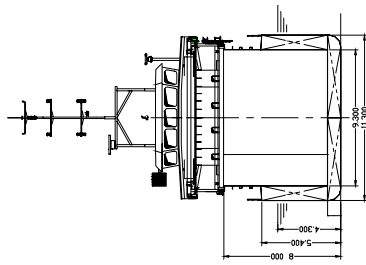
ACCOMMODATION

For captain/owner and crew for a total of 7 persons with heating, ventilation and air-conditioning

MANAGING OWNER

C.V. Scheepvaartonderneming 'Aegir', Harlingen, Netherlands

DAMEN



DAMEN

DAMEN SHIPYARDS BERGUM

Member of the DAMEN SHIPYARDS GROUP



Damsingel 4 (Industrieterrein Zuid)
9262 NC Suameer

P.O. Box 7
9250 AA Bergum
The Netherlands

phone +31 (0)511 46 72 22
fax +31 (0)511 46 42 59

info@damen-bergum.nl
www.damen-bergum.nl