



DAMEN STAN PONTOON® 7524 "P9"

GENERAL

YARD NUMBER	523906
DATE OF DELIVERY	July 2011
TYPICAL APPLICATIONS	Submersible Pontoon, Deck Cargo, Roro Cargo
TYPICAL AREAS OF OPERATION	Deep sea, inland waters, harbours, coastal waters.
CLASSIFICATION	Lloyd's Register +100 AT Pontoon, IWS for non-propelled and unmanned vessels
FLAG	Slovenia
OWNER	Ocean Koper

DIMENSIONS

LENGTH O.A.	75.00 m
BEAM O.A.	23.50 m
DEPTH AT SIDES	4.50 m
DRAUGHT MAX.	3.51 m
DEADWEIGHT	4900 ton

CAPACITIES

DECK LOAD	15 ton/m2
BALLAST TANKS	18 ballast tanks

DESIGN CONDITIONS

SEAWATER TEMPERATURE	0° to +35° C
OUTSIDE AIR TEMPERATURE	-5° to +45° C

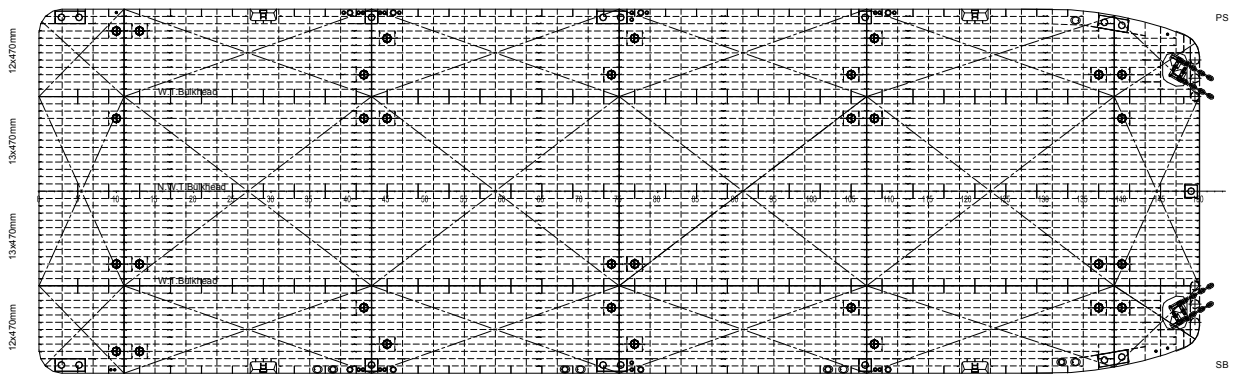
BILGE/BALLAST SYSTEM

BALLAST PIPES AND VALVES	DN250
VALVE OPERATION	Mechanical operated from main deck by a spindle
DE-AERATION	Removable caps mounted on flanges flush with main deck
SOUNDING	By means of opening of the manholes

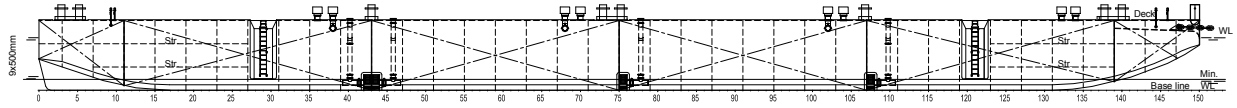
DECK EQUIPMENT

TOWING BRACKETS	Two on PS and two on SB at fore deck covered with steel gratings
FAIRLEADS	At the foreside of the towing brackets fairleads are integrated in the construction
BOLLARDS	Six double bollards and seven single bollards
DRAUGHT MARKS	At fore, midship and aft on PS and SB every 20 cm
BOARDING LADDERS	2 on SB and 2 on PS in recesses of the hull
CATHODIC PROTECTION	Zinc anodes on underwater part of the hull
MANHOLES	Flush single point opening/closing type

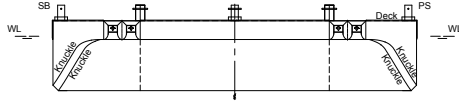
Deck plan



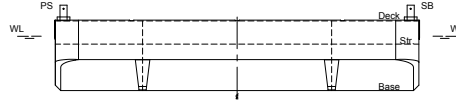
Side view



Front view



Aft view



DAMEN STAN PONTOON[®] 7524

"P9"

DAMEN

DAMEN SHIPYARDS GORINCHEM

Member of the DAMEN SHIPYARDS GROUP



Industrieterrein Avelingen West 20
4202 MS Gorinchem

P.O. Box 1
4200 AA Gorinchem
The Netherlands

phone +31 (0)183 63 99 11
fax +31 (0)183 63 21 89

info@damen.nl
www.damen.nl