



## DAMEN STAN PONTOON® 7524

"SMITBARGE 10" - "SMITBARGE 11" - "SMITBARGE 12" - "SMITBARGE 14"

### GENERAL

YARD NUMBER	523902 - 523903 - 523904 - 523905
DATE OF DELIVERY	December 2010 - February 2011
BASIC FUNCTIONS	Inland and offshore towing
CLASSIFICATION	Lloyd's Register ⌘ 100 AT, Pontoon, IWS
AREA OF OPERATION	Inland waters, harbours and at sea
FLAG	Bahamas
OWNER	SMIT

### DIMENSIONS

LENGTH O.A.	75.00 m
BEAM O.A.	23.50 m
DEPTH AT SIDE	4.50 m
SUMMER DRAUGHT	3.51 m
MAX. DECK LOAD	15 t/m <sup>2</sup>
MAX. DEADWEIGHT	4870 ton

### TANK CAPACITIES

WATERBALLAST	7335 m <sup>3</sup>
--------------	---------------------

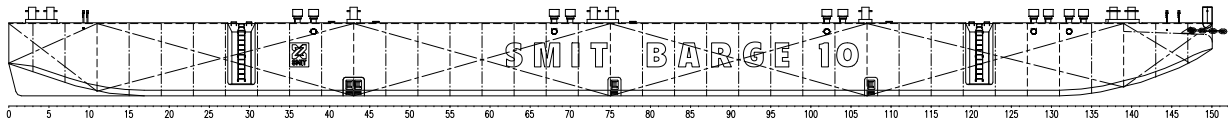
### STANDARD EXECUTION

BOARDING LADDERS
DRAUGHT MARKS
ANODES
CENTRAL CLOSED MANHOLES
SEA INLETS
BOTTOM PLUGS
REMOVABLE DEAERATION CAPS

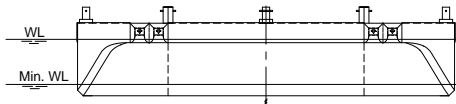
### DECK LAY-OUT

TOWING BRACKETS
8 DOUBLE BOLLARDS
5 SINGLE BOLLARDS

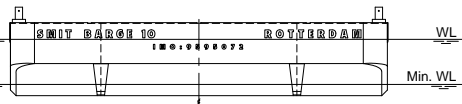
Side View



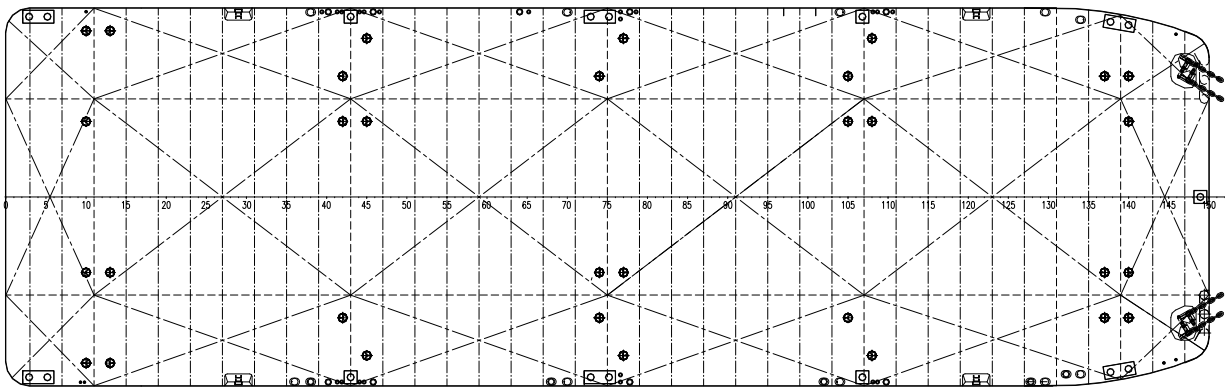
Front View



Aft View



Deck Plan



# DAMEN STAN PONTOON® 7524

"SMITBARGE 10" - "SMITBARGE 11" - "SMITBARGE 12" - "SMITBARGE 14"

## DAMEN

DAMEN SHIPYARDS GORINCHEM

Member of the DAMEN SHIPYARDS GROUP



Industrieterrein Avelingen West 20  
4202 MS Gorinchem

P.O. Box 1  
4200 AA Gorinchem  
The Netherlands

phone +31 (0)183 63 99 11  
fax +31 (0)183 63 21 89

info@damen.nl  
www.damen.nl