

# STAN PONTON 5224

"STOCK - YN 523911"

## GENERAL

Yardnumber	523911
Typical applications	Deck Cargo, RoRo Cargo for crane operations
Classification	Lloyd's Register ✱ 100 AT, Pontoon
Flag	St. Vincent and the Grenadines

## DIMENSIONS

Length o.a.	54,30 m
Beam moulded	23,50 m
Depth at side	4,50 m
Draught design.	3,00 m
Deadweight design	2.450 ton
Draught max	3.70 m
Deadweight max	3.287 ton
Deck area	700 m <sup>2</sup>
Deck strength	20 ton/m <sup>2</sup>
Deck thickness	16 mm
Water ballast	2.950 m <sup>3</sup>

## DECK LAY-OUT

Towing brackets	2 Towing brackets
Deck covering	700 m <sup>2</sup> fir wood
Container fittings	For 2 TEU
Fendering	Used tyre fenders

## STANDARD EXECUTION

Ballast pump	One 400 m <sup>3</sup> /h ballast pump
Emergency towing pin	1 pc. Flush mounted in the bow
Manholes	Flush single point closing manholes
Ramp recess	RoRo ramp recess at bow and stern
Boarding ladders	2 on SB and 2 on PS in recesses of the hull
Cathodic protection	Zinc anodes on underwater part of the hull
Bilge pump	Manual bilge pump
Lighting & ventilation	Lighting and ventilation in pump room
Generator set	1x Caterpillar C4.4 / 94 ekW / 440 V / 60 Hz / 117,5 kVA

## NAUTICAL EQUIPMENT

Navigation lighting according to Classification

## OPTIONAL EQUIPMENT

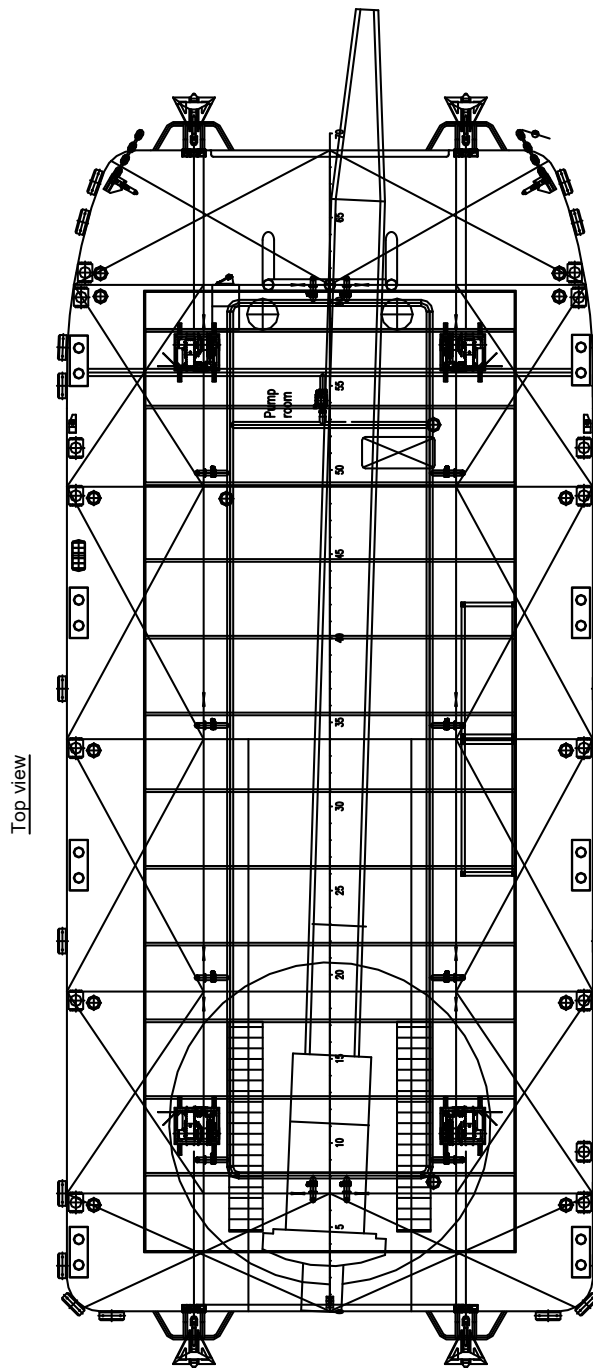
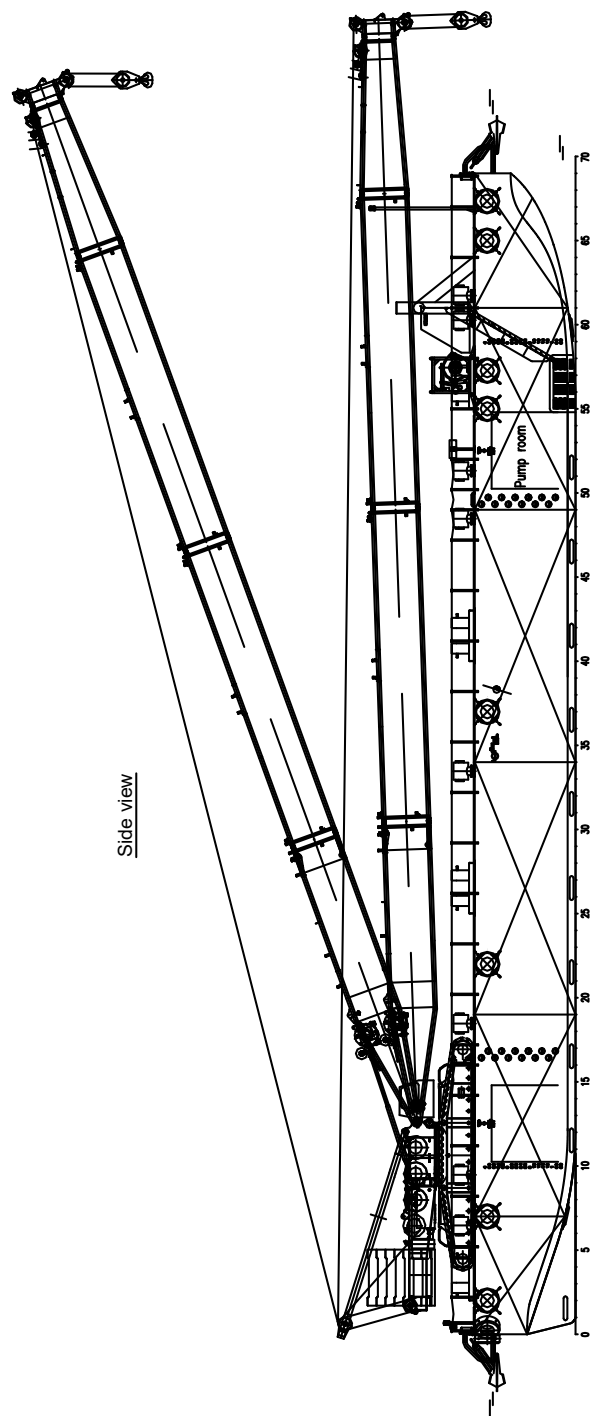
Anchors	4 Flipper type anchors
Anchor mooring system	4 DMT Electric mooring winches
Ramp panels	1,5 meter width and 8 meter length
Crawler crane	Liebherr 228 t @ 8 m, 26 t @ 44 m
Mobile harbour crane	LHM 550
	For bulk handling up to 1500 tph
	For container handling up to 32 cycles per hour

\* Mentioned deadweight is excl. crawler crane and optional equipment

\* The design draft is the advised draft for crane operations

# STAN PONTOON 5224

"STOCK - YN 523911"



# DAMEN

DAMEN SHIPYARDS GROUP

Avelingen-West 20  
4202 MS Gorinchem  
The Netherlands

P.O. Box 1  
4200 AA Gorinchem  
The Netherlands

phone +31 (0)183 63 99 22  
fax +31 (0)183 63 21 89

info@damen.com  
[www.damen.com](http://www.damen.com)

© No part of the leaflet may be reproduced in any form, by print, photo print, microfilm, or any other means, without written permission from Damen Shipyards Group

02-2020