



DAMEN STAN PONTOON 5224

"SAIF AL KHALEEJ"

GENERAL

YARD NUMBER	523910
DELIVERY DATE	December 2012
BASIC FUNCTIONS	Deck Cargo, RoRo Cargo for crane operations
CLASSIFICATION	Lloyd's Register of Shipping: ⊗ 100AT
FLAG	Saudi Arabia
OWNER	Al Saad General Contracting

DIMENSIONS AND CAPACITIES

LENGTH O.A.	54.30 m
BEAM O.A.	23.50 m
DEPTH AT SIDES	4.50 m
DRAUGHT DESIGN	3.00 m
DEADWEIGHT	2500 ton
DECK AREA	700 m ²
DECK STRENGTH	20 ton/m ²
DECK THICKNESS	16 mm
WATER BALLAST	2950 m ³

CRANE PERFORMANCE

MAKE	Liebherr
TYPE	LR 1400-2
ENGINE	6-cylinder, 270 kW
SWL	228 ton @ 8 m, 26 ton, @ 44 m
MAIN BOOM	S-49 m
HOOK BLOCK	250 ton, 2 x 125 ton
COUNTER WEIGHT TOTAL	155 ton

AUXILIARY EQUIPMENT

GENERATOR SET	1x Caterpillar C4.4
POWER	1x 94 ekW, 440 V, 60 Hz

DECK LAY-OUT

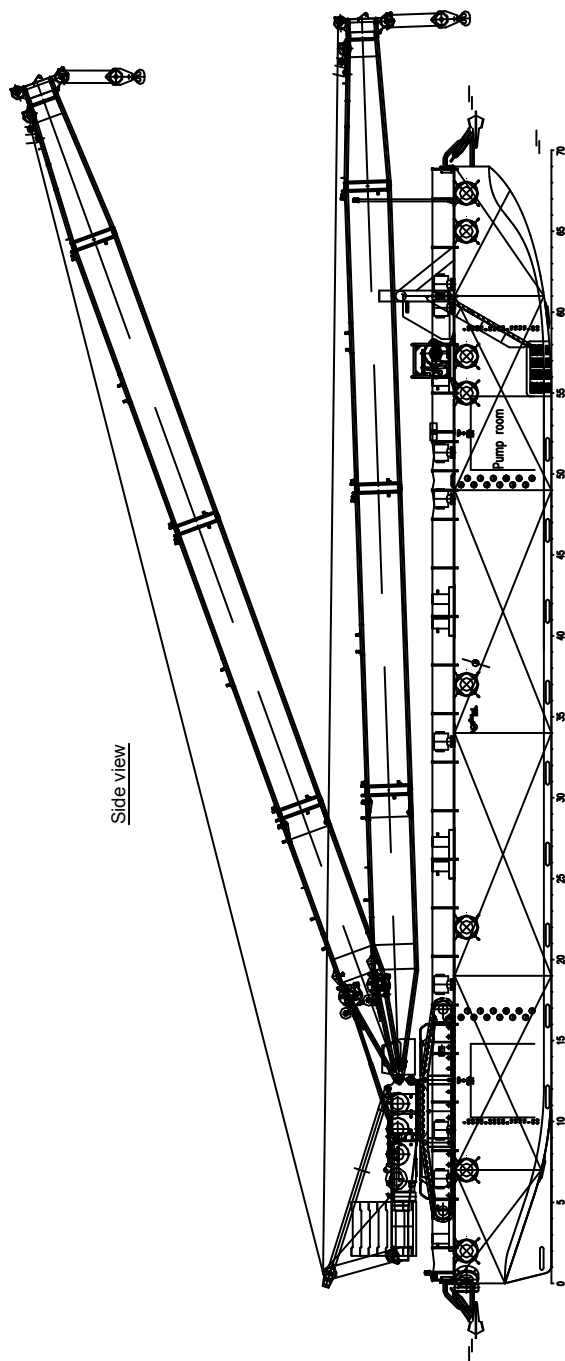
ANCHOR MOORING SYSTEM	4 DMT Electric mooring winches
ANCHORS	4 Flipper type anchors
TOWING BRACKETS	2 Towing brackets SWL 200 ton
DECK COVERING	700 m ² fir wood
CONTAINER FITTINGS	For 2 TEU
FENDERING	Airplane tire fenders of 1100 mm diameter

STANDARD EXECUTION

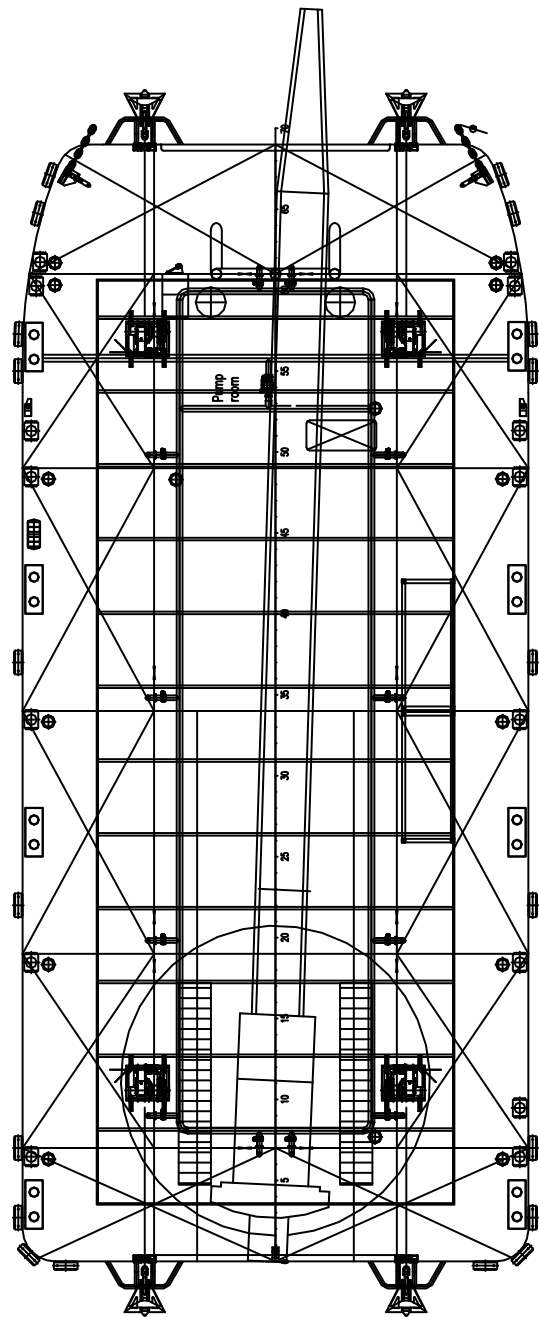
BOARDING LADDERS	2 on SB and 2 on PS in recesses of the hull
CATHOLIC PROTECTION	Zinc anodes on underwater part of the hull
MANHOLES	Flush single point closing manholes
EMERGENCY TOWING PIN	1 pc. flush mounted in the bow
RAMP RECESS	RoRo ramp recess at bow and stern
BALLAST PUMP	One 400 m ³ /h ballast pump
BILGE PUMP	Manual bilge pump
LIGHTING & VENTILATION	Lighting and ventilation in pump room

NAUTICAL EQUIPMENT

Navigation lighting according Classification.



Top view



DAMEN STAN PONTON 5224

"SAIF AL KHALEEJ"

DAMEN

DAMEN SHIPYARDS GORINCHEM

Member of the DAMEN SHIPYARDS GROUP



Industrieterrein Avelingen West 20
4202 MS Gorinchem

P.O. Box 1
4200 AA Gorinchem
The Netherlands

phone +31 (0)183 63 99 11
fax +31 (0)183 63 21 89

info@damen.nl
www.damen.nl